



**Local
Government
Commission**

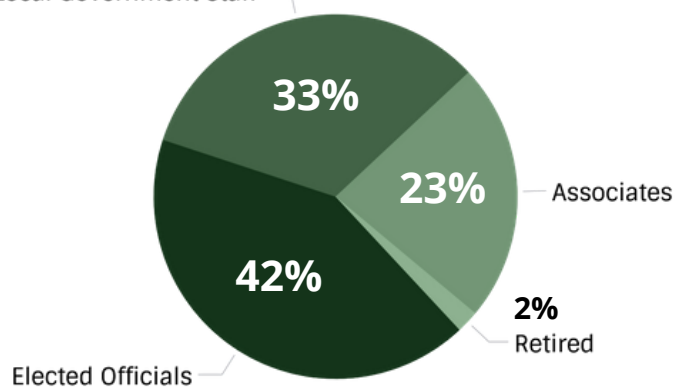
Leaders for Livable Communities

2019 Annual Impact Report

The Local Government Commission (LGC) supports local policymakers through nationally recognized events, affordable technical assistance, and policy guidance on climate change, energy, water, and healthy community design.

LGC Maintains a Network of 700+ Innovative Leaders

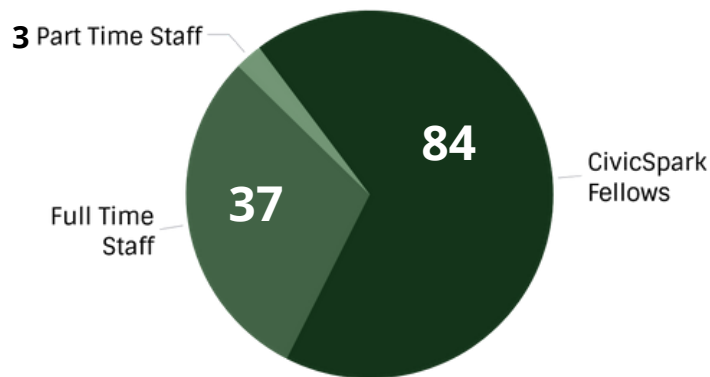
Local Government Staff



LGC is a team of

3 Part Time Staff

Full Time
Staff



LGC works in five main program areas



CLIMATE
CHANGE



COMMUNITY
DESIGN



ENERGY



NATIONAL
SERVICE



WATER

THE LGC APPROACH

With roots in California and a national reputation, LGC offers **inspiration**, **information**, and **partnership** for local and regional champions dedicated to building thriving communities that integrate civic engagement with environmental, social and economic priorities.

We affect change through:



Implementing Solutions

LGC has an extensive track record partnering with local communities as a technical assistance provider to design projects, engage stakeholders and implement solutions that advance community livability and resiliency. In 2019, LGC provided support to 145 local and regional jurisdictions. LGC staff and CivicSpark Fellows provided over 118,000 hours of direct assistance to communities throughout the state.



Connecting Leaders

LGC is a unique forum for local leaders to come together to share experience, build their network, and learn new strategies for creating livable communities. LGC offers conferences, training forums and resources that grow local knowledge for creating livable communities and helps build a cadre of leaders throughout the state with a local presence and state and national influence. We've connected over 3,400 livable community leaders and practitioners through statewide forums, regional symposiums, design workshops, webinars, and networking events.



Advancing Policy

LGC works on behalf of local leaders to advance regulatory and legislative actions that address key community design, climate change, energy, water and national service imperatives. LGC maintains partnerships with key regional, state and federal agencies and is called upon regularly to provide livable communities expertise. We've advanced policy through 37 presentations, panels, and interviews; we've engaged the state legislature with 17 comment letters and 2 testimonies; and we've held 9 policy workshops.

In 2019 LGC's board and staff members determined that **advancing decarbonization**, improving **wildland and watershed management** and increasing **climate smart affordable housing** were the most critical areas for the organization to focus on in 2019. This report outlines our progress to date.

ADVANCING DECARBONIZATION



LGC's decarbonization goals include:



Supporting and increasing a shift to sustainable mobility including: walking, bicycling, mass transit, and shared mobility options



Increasing electrification of vehicles and advancing water and energy efficiency programs



Increasing building electrification

LGC is supporting this goal through a number of programs including: community design workshops, CivicSpark fellow energy and climate projects, state technical assistance and outreach programs, and our statewide energy and climate adaptation coalitions.

COMMUNITY DESIGN

In 2019, LGC's Community Design Team worked with localities around the state conducting community visioning, planning and implementation of active transportation, corridor and community revitalization projects.



1. **City of Albany** Solano Avenue Complete Streets and Corridor Revitalization Plan
2. **City of Fresno** Blackstone Avenue Corridor Smart Mobility Project
3. **City of Guadalupe** Mobility and Revitalization Plan
4. **City of Pittsburg** Active Transportation Plan
5. **City of Richmond** First Mile/Last Mile Transportation Strategic Plan
6. **County of Riverside** Neighborhood and Regional Mobility Plans for North Shore and Mecca
7. **County of Ventura** Ojai Valley Highway 33 Multimodal and Community Enhancement Study
8. **County of Lake** Highway 20 Traffic Calming Plan & Engineered Feasibility Study
9. **City of Lakeport** Eleventh Street Corridor Multimodal Engineered Feasibility Study
10. **City of Brea** Connecting the Core Active Transportation Plan
11. **City of Arvin** Complete Streets and Safe Routes to School Plan
12. **City of Visalia** Central Visalia Traffic Safety Action Plan
13. **City of Vacaville** Downtown Specific Plan
14. **City of Paso Robles** Niblick Road Complete and Sustainable Streets Design
15. **Madera Neighborhood** Walkability Plans
16. **City of Menifee** Active Transportation Plan





SGC CALIFORNIA CLIMATE INVESTMENTS ACTIVE TRANSPORTATION PROGRAM TECHNICAL ASSISTANCE PROGRAM FOR CYCLE 4:

LGC, in partnership with California Bicycle Coalition, California Walks, and Rails-to-Trails Conservancy, worked with the Strategic Growth Council and the California Department of Transportation (Caltrans) to assist five underserved communities with preparing grant applications for Cycle 4 of the Caltrans Active Transportation Program. Four of the five communities that received assistance were awarded a grant. In addition to assisting in the preparation of grant applications, the team, led by LGC, held training sessions and networking sessions with each of the five communities in an effort to build local capacity for future grant applications.



SGC TRANSFORMATIVE CLIMATE COMMUNITIES (TCC) TECHNICAL ASSISTANCE:

LGC is providing support to Pomona, Modesto and Oakland as part of the technical assistance team to help community partnerships apply for TCC implementation grants, due in February 2020. The competitive program will award two \$28.2 Million grants that can fund affordable housing, sustainable transportation, urban greening, solar and energy efficiency projects and other sustainability improvements in disadvantaged communities.

FUNDING NAVIGATION FOR UNDERSERVED COMMUNITIES:

LGC's funding navigation and technical assistance program (www.fundingresource.org) now features over 100 of the most prominent funding opportunities for active transportation, affordable housing, drinking water, street repair, parks, public transit and shared mobility, storm water and waste water management projects. We provided support to 19 communities, helping them identify, prepare, and apply for funding opportunities. We prepared applications with ten communities for Caltrans Sustainable Communities Grants. Three have been awarded so far for a combined total of \$480,554. We received additional foundation support in July, and expanded the program to include funding resources for affordable housing.



Funding Navigation
for California Communities



STATEWIDE/REGIONAL/LOCAL TECHNICAL ASSISTANCE continued...

SHARED MOBILITY POLICY TOOLKIT AND WORKSHOP:

LGC worked with the UC Berkeley Transportation Sustainability Research Center to produce a Shared Mobility Policy Toolkit with funding from Caltrans. The Toolkit was released in January 2020 and is available at the following link:

https://www.lgc.org/wordpress/wp-content/uploads/2020/01/SharedMobilityPolicyPlaybook_2020.pdf.

LGC hosted a webinar to preview the Toolkit and organized the Shared Mobility Policy and Modeling Workshop in March, attended by over 100 participants at UC Berkeley.



AIR RESOURCES BOARD LOW CARBON TRANSPORTATION INVESTMENTS TECHNICAL ASSISTANCE:

LGC worked with the Strategic Growth Council and Air Resources Board (ARB) to help disadvantaged communities access State funding for clean cars and shared mobility options using low or zero emission vehicles. LGC partnered with community-based organizations and conducted workshops in San Bernardino, Los Angeles, Pomona, Stockton, Huron, National City, Imperial, Mecca, and West Oakland.



CLEAN MOBILITY OPTIONS VOUCHER PILOT PROGRAM:

LGC was selected by the Air Resources Board as part of a team led by CALSTART that includes the Shared Use Mobility Center and GRID Alternatives to implement a program with \$20 Million available to fund local shared mobility (car share, bike share, microtransit, etc.) projects in disadvantaged communities. LGC organized nine technical assistance forums in November and December, and has transitioned to leading management of technical assistance to help localities develop projects for submission in April 2020 when the application submission period opens.



CLIMATE CHANGE

MAYORS' COMMISSION ON CLIMATE CHANGE:

In 2019, LGC continued administering the Mayors' Commission on Climate Change, a joint initiative of Sacramento Mayor Steinberg and West Sacramento Mayor Cabaldon to identify strategies to achieve carbon zero in both cities by 2045. To support the Commission's charge, LGC formed a series of technical advisory committees to develop carbon zero strategies for the built environment, mobility, and community health and resiliency, and to identify financing options to implement these bold strategies. LGC also engaged with community leaders to ensure that the strategies being developed prioritize equitable solutions for marginalized communities. LGC organized five public meetings for the Commission to discuss its recommendations and solicit community input. This initiative will conclude in May of 2020 with a public release of the Commission's recommendations report to the mayors.



CAPITAL REGION URBAN HEAT ISLAND MITIGATION PROJECT:

In 2019, LGC led community engagement activities for a Regional Heat Pollution Reduction and Adaptation Plan, a roadmap for the Greater Sacramento region to mitigate the sources of heat and build resilience. LGC gathered community input from across the 6-county project area—conducting interviews with community leaders, leveraging existing community events and translating a survey into 8 different languages which received over 1,500 responses. LGC also worked with consultants to complete a detailed Urban Heat Island model that examines the technical potential of heat mitigation measures and evaluates transportation projects to identify targeted interventions. LGC is sharing the results of the Urban Heat Island model and recommended interventions as part of an engagement toolkit for community members across the Greater Sacramento region.



RESILIENT INLAND EMPIRE:

LGC is supporting climate resilience efforts in the Inland Southern California region by forming a regional adaptation collaborative and engaging with community leaders. LGC conducted surveys, interviews, and a meeting with 85 participants to assess the potential of forming a collaborative and to better understand local needs. With significant interest expressed, LGC convened an organizing committee to guide the development of the collaborative's identity, purpose, scope, funding plan, and governance structure. The **Inland Southern California Climate Collaborative (ISC3)**, which encompasses Riverside, San Bernardino, and Imperial counties, is set to launch in January. LGC also conducted a series of interviews with community leaders to hear about existing community priorities and how they intersect with climate resilience. A series of local Climate Equity Roundtables will be held in January to meet with community leaders and identify potential pilot projects that can address community priorities and climate threats.



ENERGY

STATEWIDE ENERGY EFFICIENCY COLLABORATIVE (SEEC):

Through the Statewide Energy Efficiency Collaborative (SEEC), LGC partnered closely with the Institute for Local Government and ICLEI - Local Governments for Sustainability to support California local governments with saving energy, reducing greenhouse gas emissions, and accelerating climate action. Through SEEC, LGC organized the 10th Annual Statewide Energy Efficiency Forum and produced CURRENTS, a quarterly newsletter providing local elected officials and staff with current information on energy issues affecting California's local governments.



Photo: SEEC's Best Practices Coordinator & LGC staff Grace Kaufman prepare to host the SEEC Forum for over 300 energy and climate leaders across California.

LGC also conducted two webinars of the highest rated breakout sessions from this year's Forum. The webinars focused on utilizing local energy ordinances to reduce greenhouse gas emissions, and providing an overview of "total resource cost" and its importance in successfully leveraging third party programs. LGC also maintained a list of prominent financing and funding sources for energy efficiency on the SEEC webpage.



10th ANNUAL STATEWIDE ENERGY EFFICIENCY FORUM - June 26-27, Long Beach, CA

The Annual SEEC Forum continues to demonstrate value to energy practitioners across the state. Over 330 local and state government, nonprofit, and private sector leaders gathered in Long Beach to learn, share, and network around key energy-related issues. Now in its tenth year, the Forum focused on the need to accelerate the pace of investment in integrated energy efficiency strategies and deep engagement with underserved and disadvantaged communities to advance decarbonization.

Featuring 16 engaging sessions, four expert plenaries and mentorship opportunities the Forum enabled energy leaders and practitioners to connect with one another to learn about innovative projects and strategies, share best practices, and troubleshoot challenges. Presentations, volunteer notes, and additional resources from this year's Forum are available on CaliforniaSEEC.org/2019-Forum.



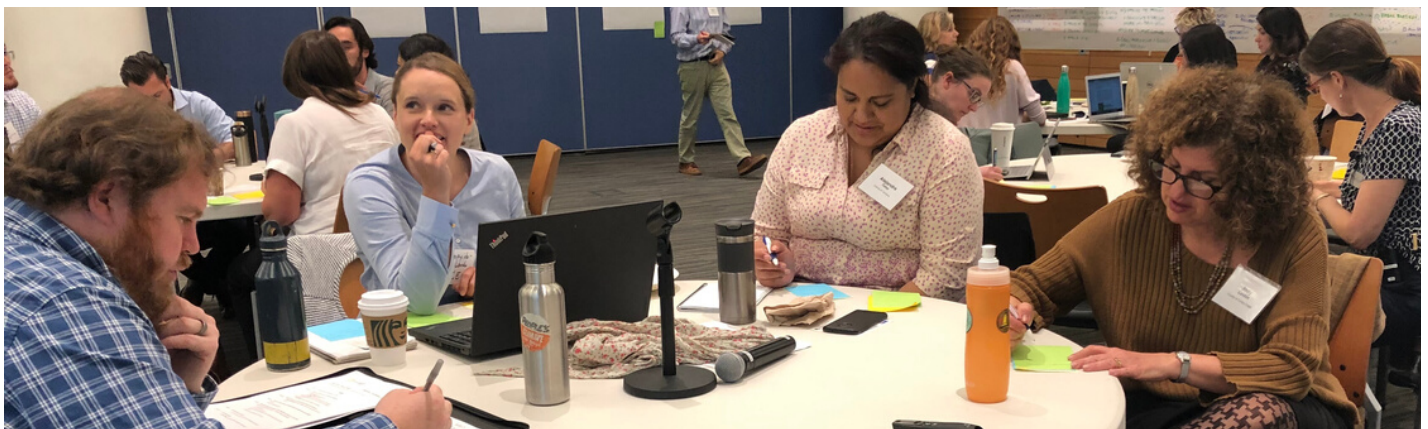
STATEWIDE ENERGY EFFICIENCY BEST PRACTICES COORDINATOR (BPC):

The overall goal of the BPC is to support California local governments in implementing cost-effective energy efficiency projects and policies that support the achievement of local and state energy and climate goals, including the State's Long Term Strategic Plan, and the Public Sector chapters of Investor-owned Utilities 2018-2025 Business Plans. The BPC produces a **wEEKly Update newsletter**, which has become a key resource for local governments and other stakeholders to stay up-to-date on the latest energy efficiency news, resources, job opportunities and events. To ensure that local governments throughout the state are able to benefit from the wealth of information shared in each newsletter, the BPC engaged additional local agencies and increased subscribership by over 150% in 2019 (from 900 to over 2,400 subscribers). Additionally, the BPC led strategic planning efforts with SEEC partners for 2020 and beyond.



LOCAL GOVERNMENT SUSTAINABLE ENERGY COALITION (LGSEC):

LGSEC remains the only entity that represents local government interests at the California Public Utilities Commission (CPUC). In 2019, LGSEC followed, and commented on multiple proceedings at the CPUC relating to Public Safety Power Shutoffs, Microgrids, and Wildfires. LGSEC keeps its members informed about a variety of CPUC proceedings of interest to local governments, and issues such as the PG&E bankruptcy and its possible impacts. In 2019, LGSEC started a bi-monthly newsletter, Sustainable Energy Scoop, to keep its members informed and connected; with a goal of supporting our members energy and climate goals. Each newsletter issue provides an introductory note from a rotating LGSEC board member, and highlights current challenges and emerging solutions for local governments. In 2020, LGSEC will continue to focus on policy efforts that align financial resources with the growing energy, climate and resiliency needs and obligations of local governments.



SUSTAINABLE ENERGY INCUBATOR:

LGC, in partnership with the Clean Power Alliance (CPA), hosted four quarterly workshops as part of the Sustainable Energy Incubator program. In total, the workshops were attended by 222 participants, including CPA member agencies, board members, nonprofits, and community-based organizations. The workshops featured experts from across the state who shared their insights on building decarbonization, social equity, CPA's community programs, and energy resilience solutions. LGC and CPA also provided technical assistance to four CPA local member agencies - Culver City, West Hollywood, Camarillo, and Malibu - to design energy initiatives and identify funding opportunities, tools, and other resources. Moving into 2020, LGC and CPA will continue to provide quarterly workshops on a range of emerging energy topics and offer individualized technical assistance through the Incubator program. Resources from the past year are available on **www.cleanpoweralliance.org/sustainable-energy-incubator**.



FRESNO COMMUNITY ACTION PLAN:

LGC is partnering with Lawrence Berkeley National Lab, the City of Fresno, Home Energy Analytics, and community-based organizations to develop a holistic community action plan that achieves climate benefits and air quality improvements through energy efficiency measures, electrification, and distributed energy resources. In 2019, LGC provided support through data collection on relevant policies, planning efforts, and financing opportunities for clean energy technology adoption, and will contribute to the development of the action plan in the next year.

NATIONAL SERVICE



For the 2019-20 Service Year, CivicSpark has 29 Fellows serving on the front lines of decarbonization—supporting leading edge communities developing carbon neutrality plans, accelerating electric vehicle deployment, and researching next generation building standards. CivicSpark's decarbonization projects are engaging 25 public agencies throughout the state.

A few highlights below illustrate the range of projects fellows are supporting:



- **Emma Diamond** and **Erika Trinidad** are developing a sustainability policy for the City of Sacramento's Department of Utilities to meet the Mayor's Carbon Neutrality goals by 2045. The policy will incorporate current goals and plans, and cover a range of topics such as water, energy, greenhouse gas emissions, waste, climate change, and equity.
- **Savannah Gil**, with the San Luis Obispo Council of Governments is working on an electric transit vehicle plan for the region that will also engage adjacent jurisdictions (Monterey County and Northern Santa Barbara County) to identify opportunities to accelerate adoption of electric public transit options across the greater Central Coast region.
- **Kiara Ryan** is working with Sonoma County Transportation Authority to increase active transportation by strengthening relationships with community based organizations, developing a community ambassadors program, and creating accessible and user friendly informational resources for the County and surrounding jurisdictions.
- **Jerel Francisco** is supporting the County of Santa Barbara's fleet electrification by helping install charging stations for 50+ vehicles. Jerel recently assisted the Department in procuring 63 charging stations, and secured \$75,000 in electric vehicle rebates. If the County utilizes all the available incentives, Jerel's support will have helped the County save nearly \$1.25 million on upfront electrification costs.



WILDLAND & WATERSHED MANAGEMENT RESILIENCE

LGC's wildland & watershed goals include:



Creating mechanisms to fund wildland and watershed management (e.g., procuring wood products for biomass, cross-laminated timber).



Advancing low impact development and green infrastructure stormwater management to build flood resilience and augment water supply.



Aligning development and infrastructure investments with fire and water management opportunities.



Helping communities rebuild smarter after disasters (e.g. property assessed clean energy or Community Choice Energy programs that support fire resilience measures or zero net energy).



Ensuring land use planning and development support water use efficiency and sustainable water management.



Helping communities prepare simultaneously for drought and flood, and to meet new water use efficiency targets.



Ensuring effective implementation of the Sustainable Groundwater Management Act (SGMA).

LGC is supporting these goals through a number of programs including: a Disadvantaged Communities Involvement project, a Great Urban Parks grant, a Community Foundation Water Initiative, regional SGMA implementation support and CivicSpark Fellow water management projects.

WATER

DISADVANTAGED COMMUNITIES INVOLVEMENT PROGRAM:

LGC is working with the Santa Ana Watershed Project Authority (SAWPA) to identify water management strengths and help meet the needs of overburdened and underrepresented communities in the watershed.

LGC contributed to a "Santa Ana Watershed Community Water Experiences: An Ethnographic Strengths and Needs Assessment," which summarizes the findings of a three-year multi-agency effort to elevate both the physical and socio-cultural strengths and needs that shape community experiences with water in the Santa Ana region.

The findings from **this report** informed the evaluation criteria for projects receiving technical assistance to bring critical resources directly to the communities within the watershed that are most in need.

LGC staff reviewed, scored, and ranked all project applications received, ultimately selecting 13 projects for funding in deliberation with the project team. In October, LGC launched its Santa Ana Watershed Ambassador Program (lgc.org/sawpa), an intensive 3-part workshop series to equip local policymakers in the Santa Ana River watershed with practical strategies and accessible tools to implement innovative solutions to their community's water challenges. Eighty-seven local elected officials and executive staff from 36 agencies within the watershed participated in the first round of training.



Photo: LGC Presented to the SAWPA Commission



GREAT URBAN PARKS:



Through the National Recreation and Park Association's "Great Urban Parks Campaign," LGC is partnering with 3 local governments to design stormwater features in local parks. These projects will engage the community and manage water from storm events.

Throughout 2019, LGC worked with a design consultant to create a stormwater pocket park that provides the accessibility and respite for the senior population of Morro Bay. The City should be breaking ground on construction of the project in early 2020. LGC is also working with students and lecturers at UC Davis to design a stormwater feature in a City of Woodland community park.

In September, LGC staff joined other Great Urban Parks Campaign grantees at the National Recreation and Park Association annual conference to explore best practices to catalyze stormwater green infrastructure investment in small and medium-sized communities across the country. The LGC team brought the conversation back to California by convening a group of NGO and private stormwater experts to develop a "Tactical Green Infrastructure" pilot program.



SOLANO GSA COLLABORATIVE:

LGC is providing critical services to disadvantaged and underrepresented community members in the Solano Subbasin, and helping them to effectively engage in the Groundwater Sustainability Plan (GSP) development process. LGC developed educational materials to inform community members about local groundwater issues, and secured babysitting and Spanish language translation services for three public meetings hosted by the Collaborative.

LGC is providing critical services to disadvantaged and underrepresented community members in the Solano Subbasin, and helping them to effectively engage in the Groundwater Sustainability Plan (GSP) development process. LGC developed educational materials to inform community members about local groundwater issues, and secured babysitting and Spanish language translation services for three public meetings hosted by the Collaborative.

LGC presented to the Walnut Grove Rotary Club on the impacts of SGMA and how to engage in the GSP development process. We also developed a fact sheet on SGMA and the Solano subbasin for more general audiences.

LGC conducted interviews with local and regional leaders to: inform them about the groundwater planning efforts occurring locally, share opportunities for community members to engage in planning, and identify the most effective outreach networks to increase community input on the anticipated draft groundwater sustainability plan.

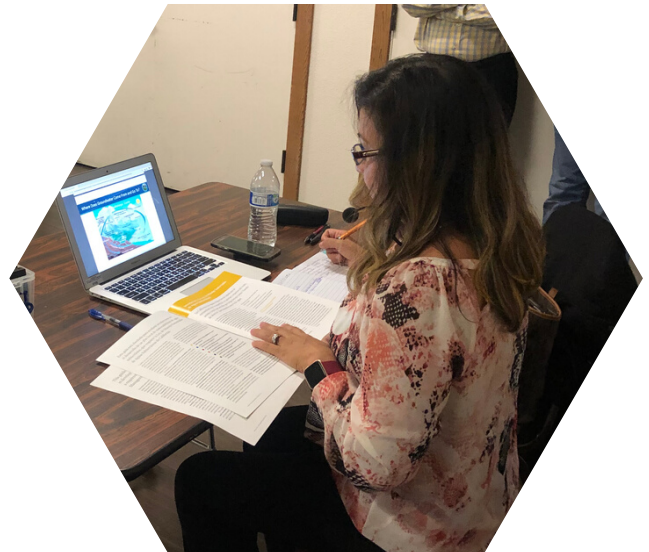


Photo: Translation services provided at the Solano Subbasin "open house" community meeting in Dixon



WESTSIDE SAC IRWM "BROWNFIELDS" PROJECT:

This fall, LGC finalized the Westside Sacramento IRWM Brownfields Coalition Assessment Report on Area-Wide Planning Efforts in the Cache & Putah Creek Watersheds. The report was a culmination of work over several years, which evaluates regional priorities and planning documents, and provides guidance for cities and counties in Lake, Solano, Napa, and Yolo counties to address potential risks to their local watersheds from abandoned mine sites.

GROWING WATER SMART:

LGC is partnering with the The Sonoran Institute to adapt the highly successful "Growing Water Smart" curriculum for a California audience. Originally developed by Sonoran Institute and Babbitt Center for Land and Water Policy for application in Colorado, the program introduces communities to a range of communications, public engagement, planning, and policy implementation tools to achieve their watershed health and community resilience goals. LGC is updating the curriculum to account for California's complex ecological and socio-political landscape. The goal is to pilot the new curriculum in 2020.



EQUITABLE INTEGRATION OF WATER AND LAND USE:

LGC launched Phase II of the “Bringing Water and Land Use Together” initiative in July, convening a new cohort of five Community Based Organizations (CBOs) to implement the strategies and recommendations identified in the report. The cohort comprises the Executive Directors from: ClimatePlan, Youth United for Community Action, Fresnoland, Nature for All, and the Anza-Borrego Foundation. Each NGO received a fully-sponsored CivicSpark Fellow to help them develop their own regional action plans and work collectively toward one statewide goal. The cohort met for an in-person workshop in October to begin developing their action plans and exploring statewide recommendations.



GROUNDWATER COLLABORATIVE:

LGC continues to support the Groundwater Collaborative, an ad-hoc network of community groups and policy advocates working on successful implementation of the Sustainable Groundwater Management Act. In addition to co-hosting monthly collaborative calls with Clean Water Action to share expertise and provide support, LGC supervised two summer interns from UC Center Sacramento to catalog Collaborative members' needs and available resources. LGC guided the Groundwater Collaborative interns in conducting 23 interviews of other collaborative members and compiling a database of 82 groundwater-related resources. LGC also led two educational webinars for the Collaborative network and the general public on managed aquifer recharge and a GSP evaluation tool developed by the Groundwater Leadership Forum.



Photo: LGC Groundwater Interns Armida Reyes and Mariela Loera (with Water Manager, Emily Finnegan), presenting their research at the UC Center Sacramento Showcase

GROUNDWATER LEADERSHIP FORUM:

This year, LGC was invited to join an elite group of thought-leaders working on California groundwater issues. The Groundwater Leadership Forum, organized by the Water Foundation, has two goals: to advance state policy that will ensure the effective implementation of SGMA and to develop a tool for stakeholders to evaluate and comment on Groundwater Sustainability Plans as they are developed. LGC contributed to a groundwater priorities letter submitted to Governor Newsom's office, which is reflected in the Governor's Executive Order N-10-19, and developed direct guidance on the Governor's Water Resilience Portfolio with regard to groundwater.



LGC helped develop Groundwater Sustainability Plan (GSP) review templates to help streamline evaluation and public comment on GSPs. These templates were shared with GSAs and stakeholders across the state to assist in reviewing the 200+ GSPs to be released over the next two years. LGC assisted in reviewing GSPs, and signed on to comment letters, for 15 high-priority critically-overdrafted groundwater basins.

LGC participated in two meetings with high-ranking agency staff, to share our reflections from the GSP review process, and urge both the Department of Water Resources and the State Water Resources Control Board to uphold the intent of SGMA in reviewing GSPs for adequacy.

CALIFORNIA WATER POLICY CONFERENCE - PLANNING COMMITTEE:

LGC is on the planning committee for this premier statewide event, which was held in San Diego, April 4 & 5 2019. This year's event was the most successful to date, bringing together 260 of the top water experts, policymakers and thought leaders from across the state to explore solutions to complex and controversial water issues. LGC staff facilitated a session on the future of the San Joaquin Valley, highlighting the interconnectivity of the current housing crisis, growth projections, and impact to agriculture of Sustainable Groundwater Management Act implementation. Other event highlights included an emphasis on Tribal water rights, and creative approaches to upper watershed management for downstream benefits.

The planning committee is currently working on the 2020 conference, which will be held in Davis, April 2 & 3, 2020. LGC is developing two plenary sessions; one on safe drinking water and one on SGMA, as well as a break-out session on integrated planning inspired by our **"Bringing Water and Land Use Together"** report.



Photo: CivicSpark Water Cohort at the 28th Annual CWP Conference

BORREGO SPRINGS - INTEGRATED PLANNING TECHNICAL ASSISTANCE:

LGC is helping the unincorporated community of Borrego Springs pursue integrated watershed master planning. Following an integrated planning workshop we co-hosted in April, LGC launched a work-group of more than twenty community stakeholders, meeting monthly, to scope the integrated plan. The goal of the plan is to align the Community Plan, Groundwater Sustainability Plan, and Geotourism Charter, and to identify economic development opportunities to sustain the community into the future. LGC also identified and shared potential funding opportunities to begin development of the integrated plan.



LGC provided an independent review of the Borrego Subbasin Groundwater Sustainability Plan, using the evaluation tools developed by the Groundwater Leadership Forum. LGC's recommendations supported local stakeholders in submitting public comment letters to their Groundwater Sustainability Agency (GSA). The Borrego Subbasin was the first GSA in the state to release a complete draft GSP. Subsequently, the greatest water users in the basin pursued a court adjudication process in place of their GSP. LGC reviewed the Stipulated Settlement Agreement, and supported community activists in developing their public comments in response.



NATIONAL SERVICE

CIVICSPARK:

For the 2019-20 Service Year, CivicSpark has 45 Fellows supporting California communities tackling the watershed and wildland issues by facilitating critical wildfire recovery and response efforts, elevating equity and environmental justice in groundwater plans, and connecting rural and tribal stakeholders to vital land-use planning efforts. CivicSpark's wetlands/wildlands projects are engaging 40 public agencies throughout the state.





Some recent updates from current projects include:

- As part of LGC's Community Foundation for Water Project, **Meet Panchal** is building watershed resiliency in Borrego Springs by supporting the implementation of Borrego Water District's Groundwater Sustainability Plan (GSP) and conducting research on integration of the GSP with Borrego Springs' Community Master Plan. Through outreach and education for local businesses, park planners and other community stakeholders are helping the community understand current and future water use, and educating the community on the GSP and the reality of the current water use.
- Serving with the Department of Water Resources (DWR), **Rebecca Berg** is working to increase local water resiliency in Tulare County by identifying water needs and mitigation opportunities among disadvantaged communities (DACs). She is developing DAC and tribal government engagement tools that will enable DWR to advise other regions on how to address water resiliency issues among their most vulnerable communities.
- **Miles Gordon** is working with the California Office of Emergency Services to facilitate better rural adaptation planning through a pilot project with Tulare and Butte counties using the newly released Adaptation Planning Guide (APG) 2.0 as a planning tool. He will be incorporating their experiences into a user guide for other jurisdictions replicate. To date, his work has included researching forest management for county-level general plans and assessing economic and ecosystem services cost savings if large scale fuel treatment/landscape management was implemented prior to major wildfires.



EVENTS

REGIONAL POLICYMAKER DINNER FORUMS - Sacramento, CA:

LGC is in its 16th year of organizing educational dinner forums for elected officials, city managers and county administrative officials from the six-county capital region. The dinner forums provide the opportunity for local leaders to network with their peers, share ideas, learn and discuss regional issues. On April 11th, LGC hosted a dinner forum featuring Jennifer Montgomery, Director of the Governor's Fire Management Task Force, on forest management and disaster preparedness.



**Local
Government
Commission**

Leaders for Livable Communities



4TH CALIFORNIA ADAPTATION FORUM (CAF):

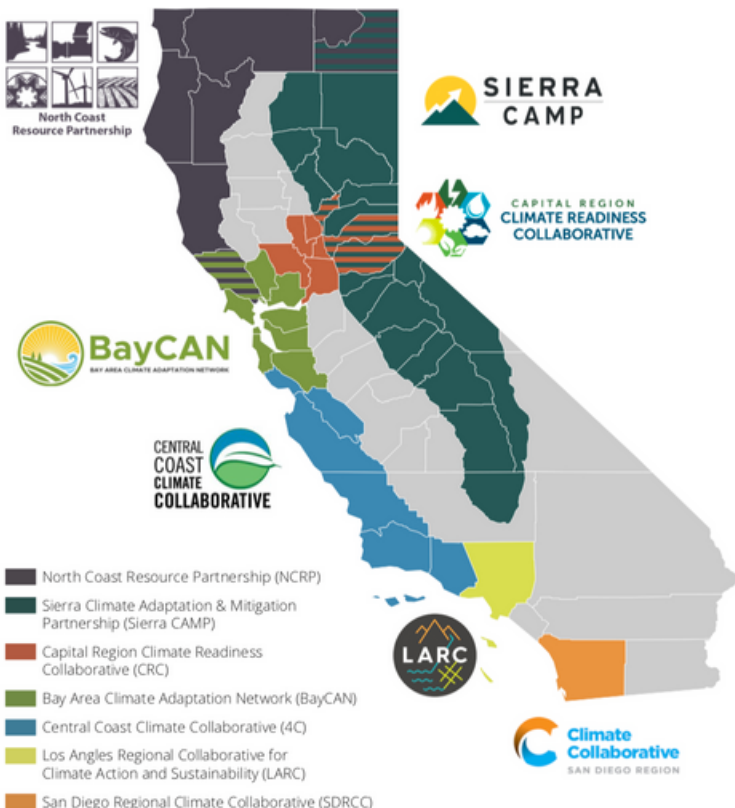
LGC began planning for the 4th biennial California Adaptation Forum, which will take place August 18-20, 2020 in downtown Riverside. LGC started with a series of Equity & Inclusivity Listening Sessions to gather early input from community leaders on thoughtfully integrating equity in the program and improving the inclusivity and accessibility of the event. LGC also launched a Program Advisory Committee to identify key topics and themes for the 2020 CAF. The committee highlighted urgency, political courage, scaling up solutions, and shifting culture as potential themes to elevate throughout the program.

The committee also expressed a desire to address funding and financing, the intersection of adaptation and affordable housing, economic impacts and opportunities, and strategies to accelerate implementation. LGC will continue to work with the committee and other adaptation leaders to develop a dynamic and valuable program while exploring opportunities to engage youth, leverage art, and offer training to help participants build their adaptation skills and capabilities.



CLIMATE

ALLIANCE OF REGIONAL COLLABORATIVES FOR CLIMATE ADAPTATION (ARCCA):



For 2019, ARCCA identified two key priorities: wildfire resilience and sea level rise adaptation. Over the course of the year, ARCCA conducted three member meetings, seven webinars, and numerous policy discussions to explore the multi-faceted legal, financial, and policy dimensions of building resilience to wildfires and adapting to sea level rise. Key topics included health impacts from wildfire smoke, financing for forest management, energy resilience, adaptation pathways, and managed retreat.

ARCCA continued engaging in the development of adaptation policies and programs and submitted comment letters in response to the 2030 Natural and Working Lands Climate Change Implementation Plan, the Regional Forest and Fire Capacity Program Grant Guidelines, the Water Resilience Portfolio, and the House Select Committee on the Climate Crisis'. To further support California's adaptation community, ARCCA developed a legislative tracker to help practitioners keep track of adaptation-related bills and maintained the California Resiliency Network listserv to facilitate peer-to-peer communications, a calendar of climate-related events.

CAPITAL REGION CLIMATE READINESS COLLABORATIVE (CRC):

For 2019, CRC identified drought and flood resilience and member recruitment as priorities. CRC increased its membership accordingly by 43% and recruited 12 new members, including seven who focus on water and CRC's first local union. In an effort to increase capacity, provide technical support, and foster collaboration throughout the capital region, CRC created a new membership category to invite state agencies to engage in regionally-focused climate conversations. As a result, The Department of Water Resources, Delta Stewardship Council, and the Sacramento San-Joaquin Delta Conservancy joined the collaborative.



CAPITAL REGION
CLIMATE READINESS
COLLABORATIVE

A Coalition of the Local Government Commission



CRC strives to equip the region with information and resources to support members efforts to plan and prepare for climate change. CRC hosted public webinars - attended by hundreds of people - on the Adaptation Clearinghouse, authentic community engagement, and communicating with diverse audiences about climate change. In 2019, CRC expanded upon their Public Safety Announcement (PSA) campaign initiative - focused on extreme heat and heat safety - and added flood safety and awareness to be disseminated on social media for three months during the winter months. In February, CRC disseminated the findings of California's Fourth Assessment Sacramento Valley Report at the Sacramento Valley Regional Climate Symposium. Other workshops in 2019 focused on drought and flood, forest resilience bonds, a joint Mayors' Climate Commission between the City of Sacramento and West Sacramento, and the impacts of Public Safety Power Shut Offs on the region.

CLIMATE SMART AFFORDABLE HOUSING



LGC's housing goals include:



Aligning land use planning, housing development and infrastructure decisions to minimize housing related climate risks (including fire, drought and flood)



Reducing greenhouse gas emissions, energy use and water use



Reducing barriers for transit-oriented and infill development, especially for affordable housing

LGC is supporting these goals through events, our funding platform (**FundingResource.org**), CivicSpark housing projects and an inclusionary housing initiative.

COMMUNITY DESIGN

With a grant from the Resources Legacy Fund, LGC funded research by the Western Center for Law and Poverty on inclusionary housing policy and best practices, and disseminated the information through a fact sheet, web page, webinars and sessions at the Yosemite Policymaker's Conference in March and at the California Housing Conference in April. Resources Legacy Fund provided additional support in July to add affordable housing to our funding navigation and technical assistance platform (**FundingResource.org**).

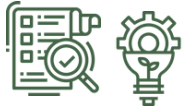
LGC also conducted a workshop in partnership with the Tulare County Association of Realtors in Visalia in November on Opportunity Zones and other policy, funding and financing tools to catalyze investment and development in infill areas.



Funding Navigation
for California Communities



WESTERN CENTER
ON LAW & POVERTY



NATIONAL SERVICE

CAPITAL REGION CLIMATE READINESS COLLABORATIVE (CRC):

For the 2019-20 Service Year, CivicSpark has 12 Fellows addressing California's housing crisis by partnering with state agencies to increase access to funding and technical assistance, integrating equity into housing plans, researching innovative housing models, and compiling strategies to integrate housing and transit planning. CivicSpark's climate smart housing projects are engaging 11 public agencies throughout the state.

Some recent updates from current projects include:

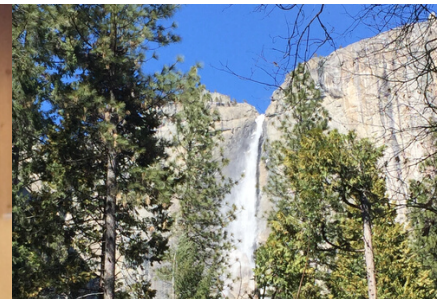
- **Rosa Maldonado** is working with the Community College Chancellor's Office at Compton College to address housing security on community college campuses. Rosa is currently investigating other successful community college campus models and compiling data on design, costs, operations, and maintenance as well as identifying partnership models. Results of this project will be shared across the California Community College system.
- Serving with the California Department of Housing and Community Development, **Colin Cross** is helping Southern California Communities access state housing resources by providing SB 2 application assistance to Gateway Cities Council of Governments jurisdictions. So far, Colin has increased Gateway's intended SB 2 applicants from single-digit numbers to the overwhelming majority of the region's cities.
- **Ayelet Zamek** is supporting the County of San Luis Obispo's Housing Action Team, a group of county, city, and regional planners who are identifying regional strategies to address both infrastructure and affordable housing needs. Ayelet is also serving the Water resources division allowing her to find synergies between housing and climate-driven water resources challenges.



EVENTS

28TH ANNUAL YOSEMITE POLICYMAKERS CONFERENCE

The 2019 Yosemite Policymakers Conference, co-hosted with CALCOG, was LGC's largest ever, with over 200 city and county elected officials, regional leaders, executives, and senior policymakers attending. The conference focused on housing and transit oriented development, disaster response and natural resource management.



WATER

As a follow-up to the "Equitable Integration of Water and Land Use" report, LGC wrote two "translation papers" to bridge water and land use together in tangible, actionable ways. The second of these papers is titled, Water Smart Housing Development, and speaks to the issues of sprawl and affordability in relation to water and land use decision making. The paper identifies how local governments can use development opportunities to supplement their natural resource management efforts.



BOARD MEMBER HIGHLIGHTS



Two leaders who have dedicated years to serve California's communities...

Supervisor Jane Parker County of Monterey (2008)

LGC boardmember, Supervisor Jane Parker from Monterey County, completed her third and final term in office. Parker's leadership over the 12 years has impacted the County in a number of significant ways. Since 2008, Jane's priorities as Supervisor have included responsible land-use policy, economic development and local job creation, crime prevention including gangs and juvenile violence, water and mass transit solutions, increased government accountability and customer service for County services, and protecting the County's natural resources and open space. One of Jane's proudest accomplishments is fundamentally changing the culture of the County government by encouraging them to increase their transparency and include board meeting minutes online. Parker has backed longtime aide Wendy Root Askew's candidacy to replace her.



Councilmember, Miguel Canales, City of Artesia (2011)



LGC boardmember, Councilmember Miguel Canales, completed his second and final term in office. Canales' inclusive direction over the last 8 years has benefited the City of Artesia for years to come. Since 2011, Canales has focused on implementing smart growth policy and equitable economic development for all Artesians. In his position as Councilmember, Canales strived to improve the quality of his community by focusing on broad community-wide initiatives that bring positive outcomes to the whole community. In Canales' words, "A livable and walkable city is possible through smart investments in the right projects to encourage residents to shop, dine, and play."

THANK YOU TO ALL OF OUR PARTNERS!

We are so grateful to you, our board, members, funders, and allies, for your support.

We are privileged to be part of such a dynamic and passionate group of change-makers. In 2020, we look forward to continuing to fulfill the great work of advancing community livability with you all.

