

Facing Adversity and Getting Stuff Built

Presented by: Michael Sacuskie
Associate Engineer/Bicycle Program Coordinator
City of Modesto





Existing Freeway Interchange



Judge Harry Pregerson Interchange

What could it be?

London, Proposed Sky Cycle Highway



Existing Freeway



Interstate 80

Is this possible?



**Denmark
Cycle Superhighway**

Anywhere USA



**Modesto
Typical Intersection**

What if?



Eindhoven, Netherlands

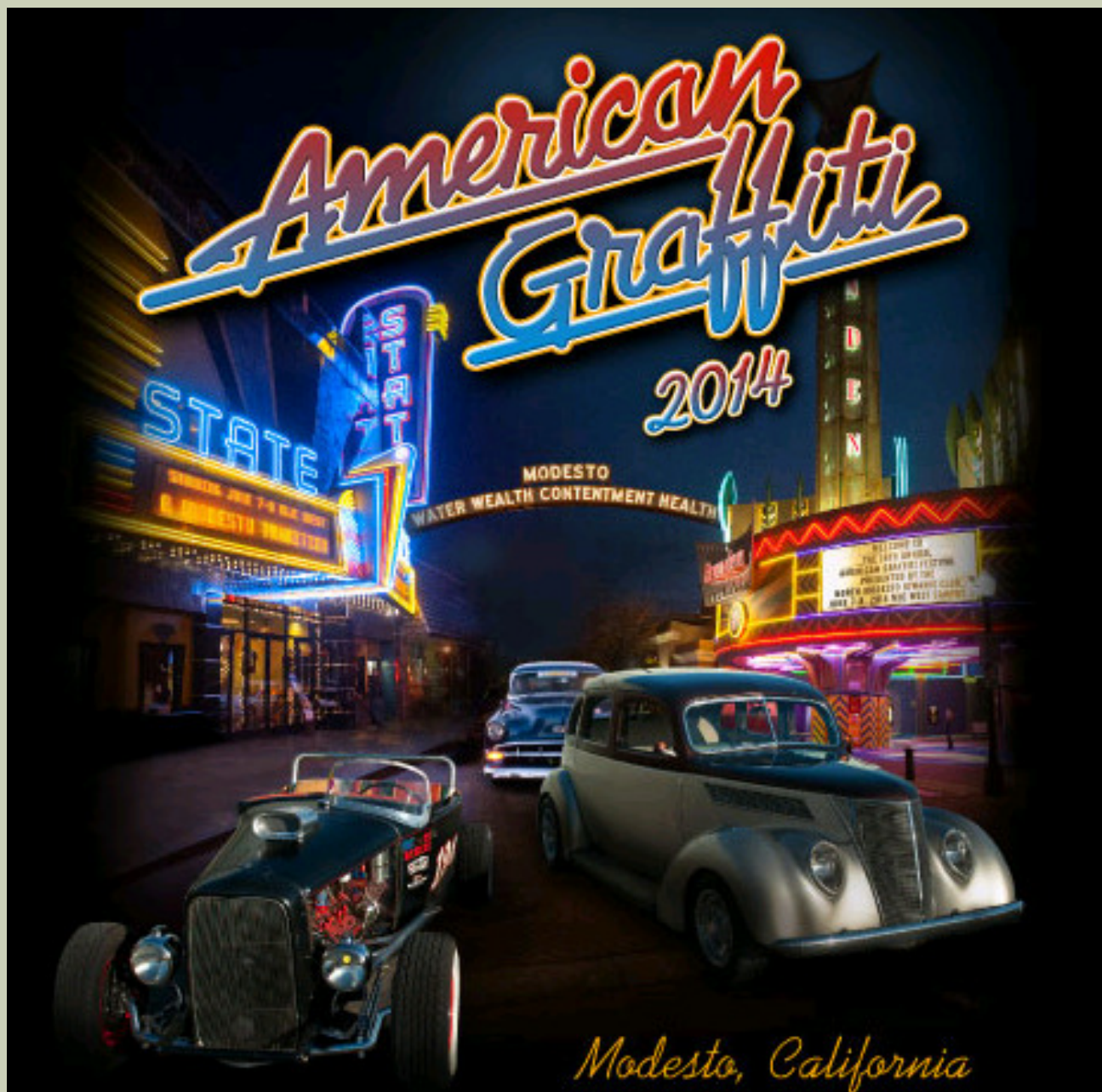
Bike Racks?



Bicycle Parking Structures



Amsterdam Central Station



American Graffiti

2014

MODESTO
WATER WEALTH CONTENTMENT HEALTH

Modesto, California

STREETSBLOG CALIFORNIA

Wednesday, May 27, 2015

 7 Comments

Modesto, California: A Model for a Bicycle-Friendly City?

by [Melanie Curry](#)



Bike lanes featuring the first use of green paint in Modesto were installed in 2012 along Sylvan Avenue. Photo: Michael Sacuskie/TED

Complete Streets for Modesto

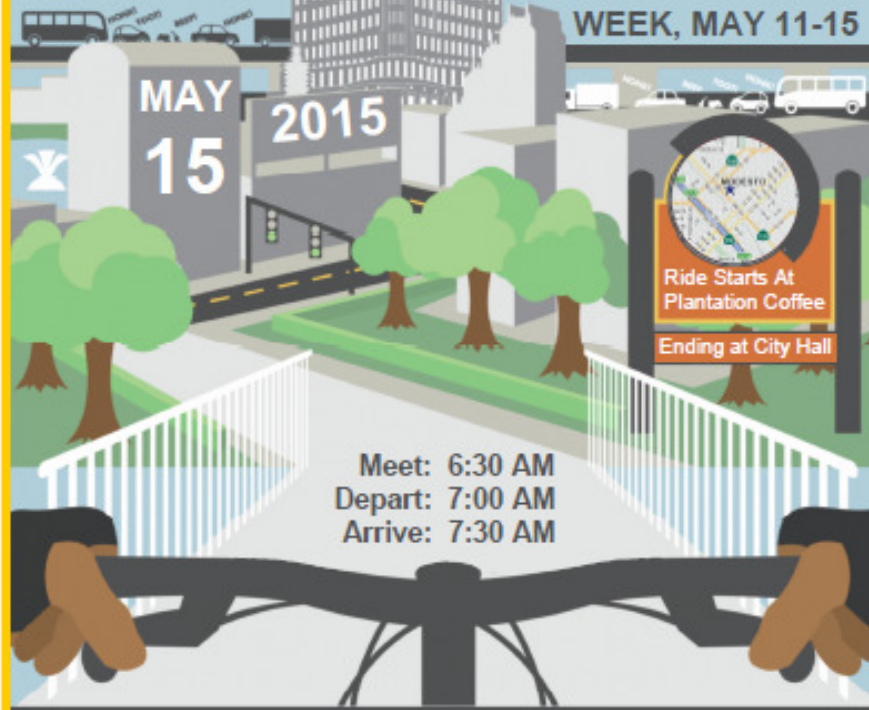




Join Modesto Mayor Garrad Marsh

BIKE^{TO}WORK

WEEK, MAY 11-15



Meet: 6:30 AM
Depart: 7:00 AM
Arrive: 7:30 AM

Bike with the Mayor: May 15th

Start: Plantation Coffee, 3020 Floyd Avenue, Modesto

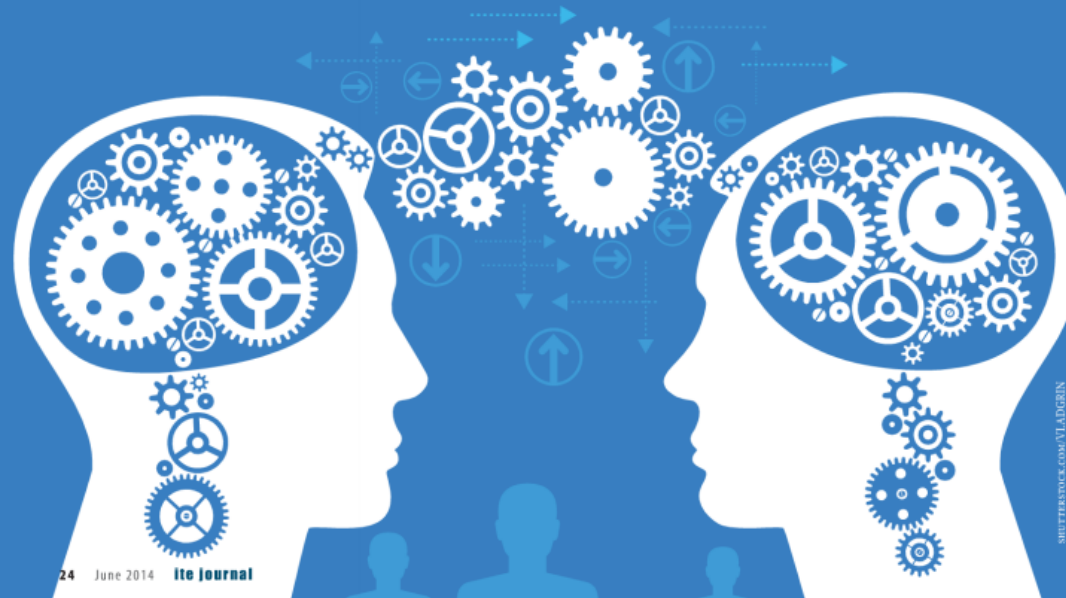
Finish: City Hall, 1010 Tenth Street, Modesto

For more information contact: msacuskie@modestogov.com

Engineers + Planners = Success

**The World is Better with Engineers
and Planners Collaborating**

BY TOM BLAIR, JENNIFER PANGBORN-DOLDE, AICP,
JUSTIN WYSE, PTP, AND JUSTIN CARNEY



Complete Streets Workshop



BIKE LANE WORKSHOP

MAY 17TH 9:00-12:00
1010 TENTH STREET

WHAT: COME LEARN ABOUT BIKE LANES

WHERE: ALONG A SIX-MILE ROUTE (SEE MAP ON REVERSE)

WHY: TO MAKE MODESTO'S STREETS SAFE FOR EVERYONE!

WHEN: BIKE TO WORK DAY-MAY 17TH, 9:00-12:00

WHO: CITY STAFF, STAKEHOLDERS & INTERESTED PARTIES

HOW: BY BICYCLE, OR IN THE OFFICIAL CHASE / VAN SUPPORT

WHY AGAIN: TO SUPPORT THE US E.P.A. TECHNICAL ASSISTANCE GRANT TO C.E.D. FOR COMPLETE STREETS.

FOR MORE INFORMATION CONTACT:
MICHAEL SACUSKIE 571-5552
BRAD WALL 577-5273

WHAT TO BRING: BIKE, HELMET AND STREET CLOTHES.

STANISLAUS BICYCLE CLUB CAN PROVIDE BIKES AND HELMETS IF NEEDED.



WHEELCHAIR EXPERIENCE

MAY 16TH 9:00-11:00
920 12TH STREET

WHAT: COME EXPERIENCE DOWNTOWN IN A WHEELCHAIR

WHERE: AROUND DOWNTOWN MODESTO

WHY: TO MAKE MODESTO'S STREETS SAFE FOR EVERYONE!

WHEN: WEDNESDAY MAY 16TH, 9:00-11:00

WHO: CITY STAFF, STAKEHOLDERS & INTERESTED PARTIES

HOW: BY WHEELCHAIR ON DOWNTOWN STREETS & SIDEWALKS

WHY AGAIN: TO SUPPORT THE US E.P.A. TECHNICAL ASSISTANCE GRANT TO C.E.D. FOR COMPLETE STREETS.

FOR MORE INFORMATION CONTACT:
MICHAEL SACUSKIE 571-5552
BRAD WALL 577-5273

WHEELCHAIRS WILL BE PROVIDED BY D.R.A.I.L.



**Floyd Avenue
Modesto, California**

Sylvan looking east bound



**Sylvan in front of
Beyer High school
looking west**

12.5'

11.5'

5'





- 1 Desired width: 6 feet
- 2 Wherever possible, minimize parking lane width in favor of increased bike lane width.



- 16
- 11 Separation between bike lane striping and parking boundary reduces risk of door zone conflicts.
- 6 6- to 8-inch solid white line
- 9 4 inch solid white line

<https://prezi.com/9rowaqq03aqh/sylvan-avenue-modesto-ca/>

**Sylvan and Keller
Modesto, California**





**Sylvan and Boyce
Modesto, California**

**Needham and 13th
Modesto, California
“City Striping Crew”**



Maintenance Project

“City Paving Crew”



Oakdale and Scenic
Modesto, CA

Oakdale Road looking South at Scenic Drive

Bicycle Rider

Class 1 Bike Trail signs
for Drycreek Park

Chevron striping
10' on center

5' Painted Island

6' Bike Lane



**Oakdale and Scenic
Modesto, CA**

TACTICAL² URBANISM

Short-Term Action || Long-Term Change

tac·ti·cal

adj: \tak-ti-kəl\

1. of or relating to small-scale actions serving a larger purpose
2. adroit in planning or maneuvering to accomplish a purpose

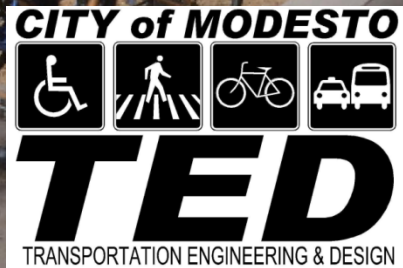




**Parking Day
Modesto California
11th and J Street**

Bike Parking, South Corner of 11th and J Street







News > Local News

Modesto's first bicycle corral installed at 11th and J streets

BY BEE STAFF

local@modbee.com February 25, 2014 Updated 16 hours ago



Modesto's first bicycle corral, an on-street parking area, has been installed at 11th and J streets downtown.

Bike corrals provide convenient parking for cyclists and end the need to bring bicycles on the sidewalk.

The Urban Design Group







**11th Street
Modesto, California**

15th and J Street Modesto, California



**Oakdale Road between Floyd and Briggsmore
(1 Mile of Buffered Bike Lane)
Modesto, California**



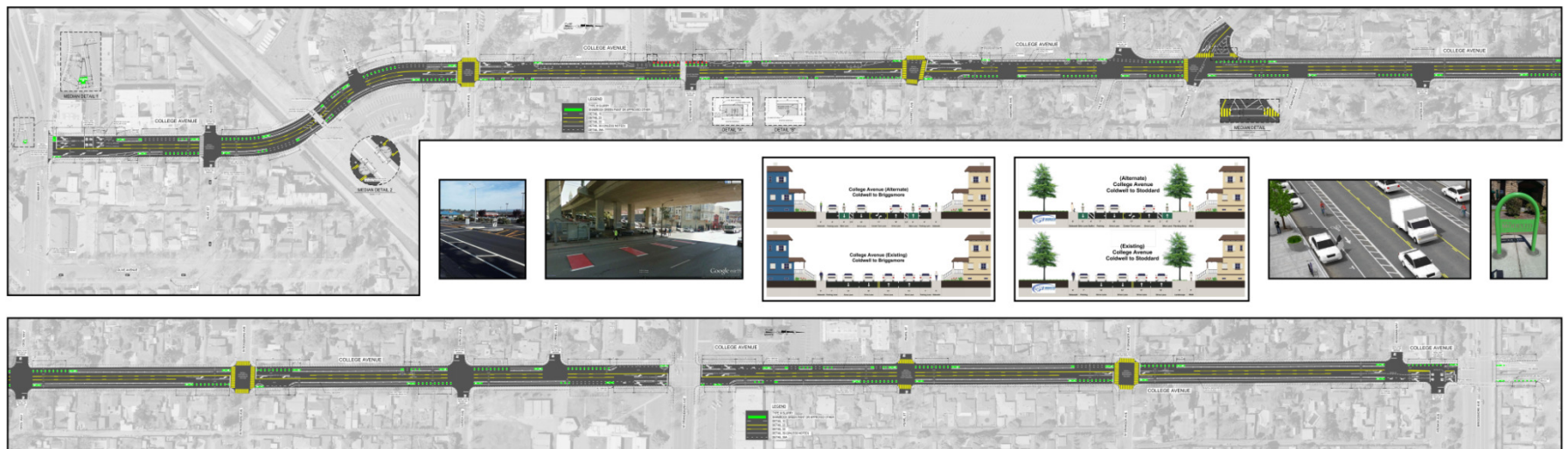
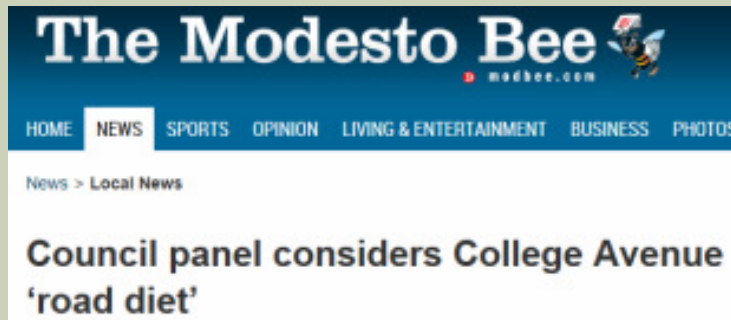
**Briggsmore Avenue between McHenry and Sisk
(2.5 miles of buffered bike lane)
Modesto, California**



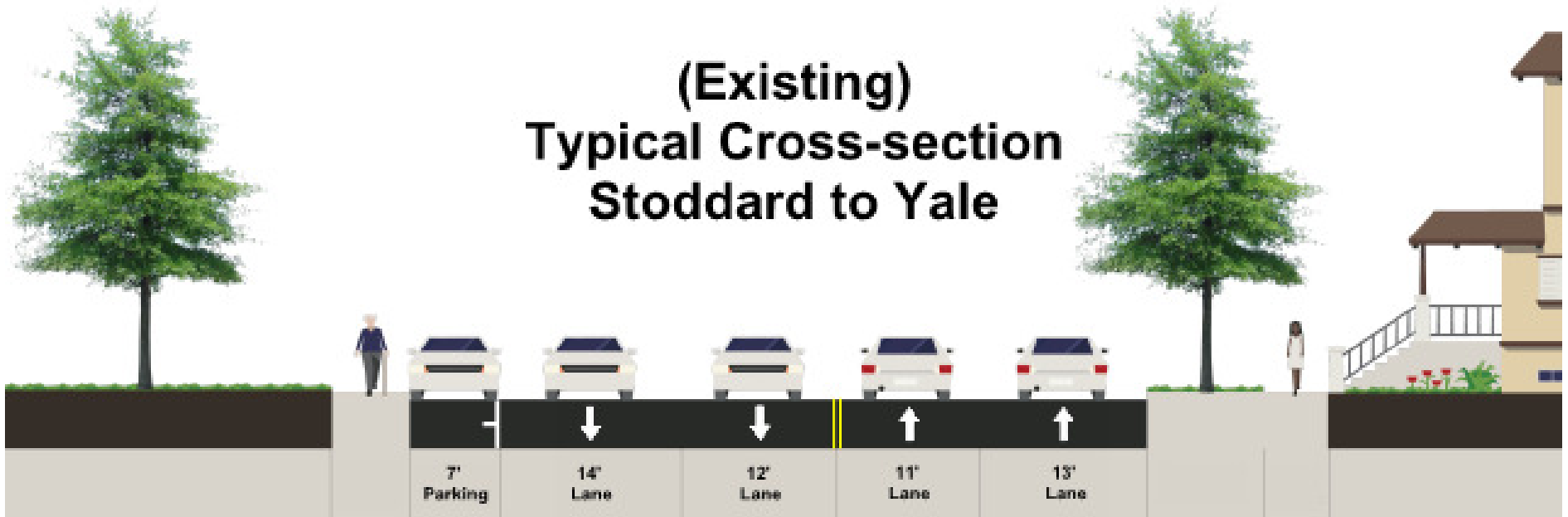
College Avenue “Road Diet” Needham to Briggsmore Modesto, California



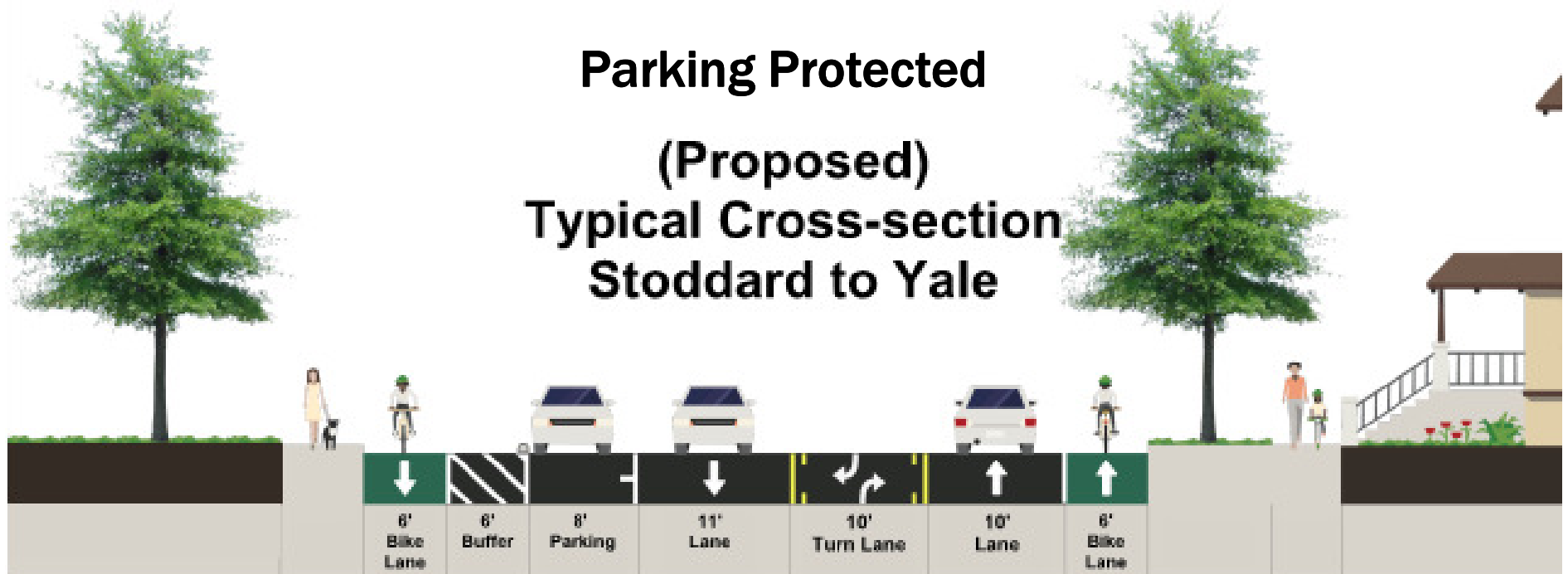
College Avenue “Road Diet” Needham to Briggsmore Modesto, California



**(Existing)
Typical Cross-section
Stoddard to Yale**

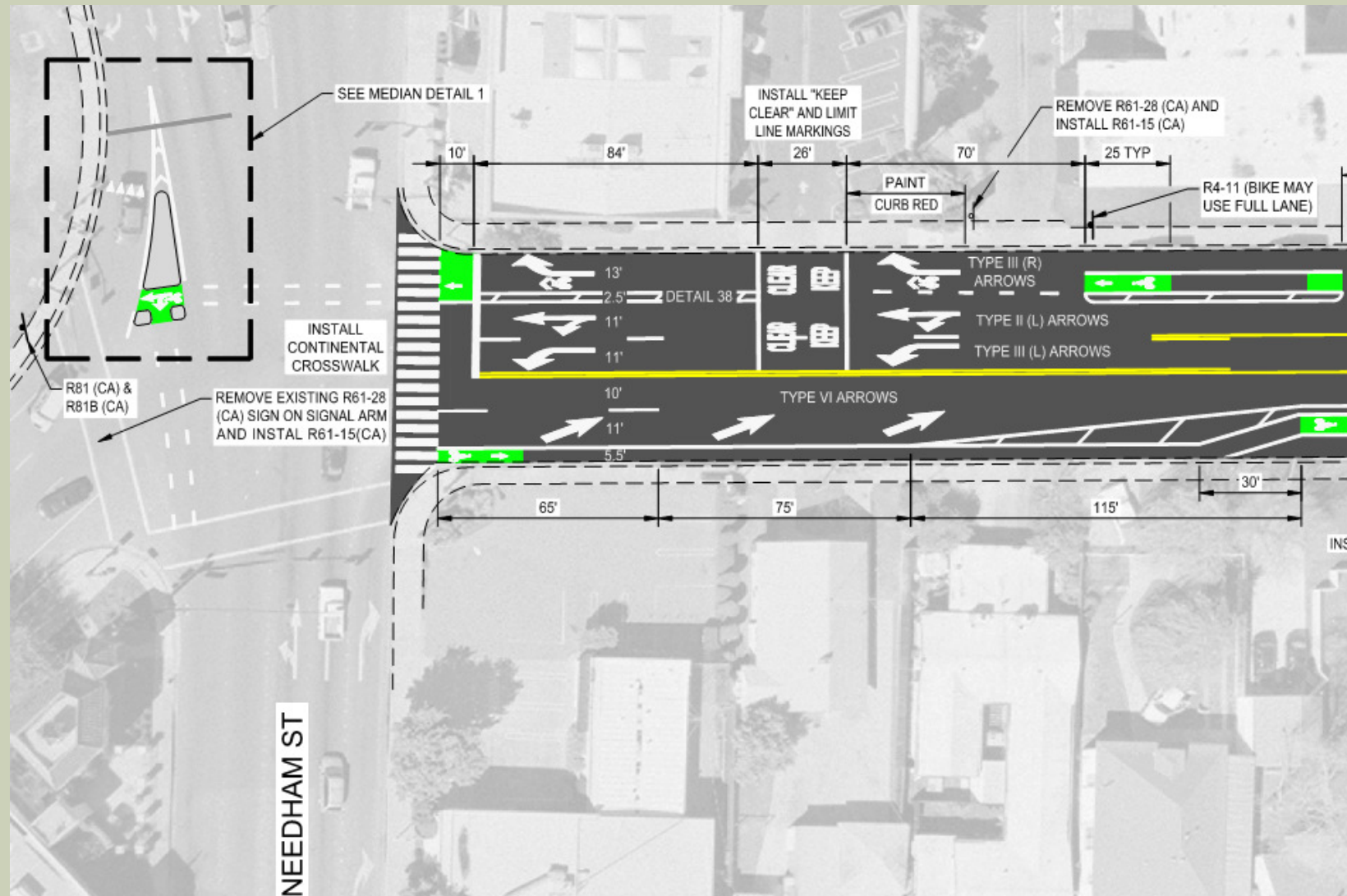


**Parking Protected
(Proposed)
Typical Cross-section
Stoddard to Yale**



Two Stage Turn for Bicycles

Needham and College



**Parking Protected
Coldwell and College
Modesto, CA**





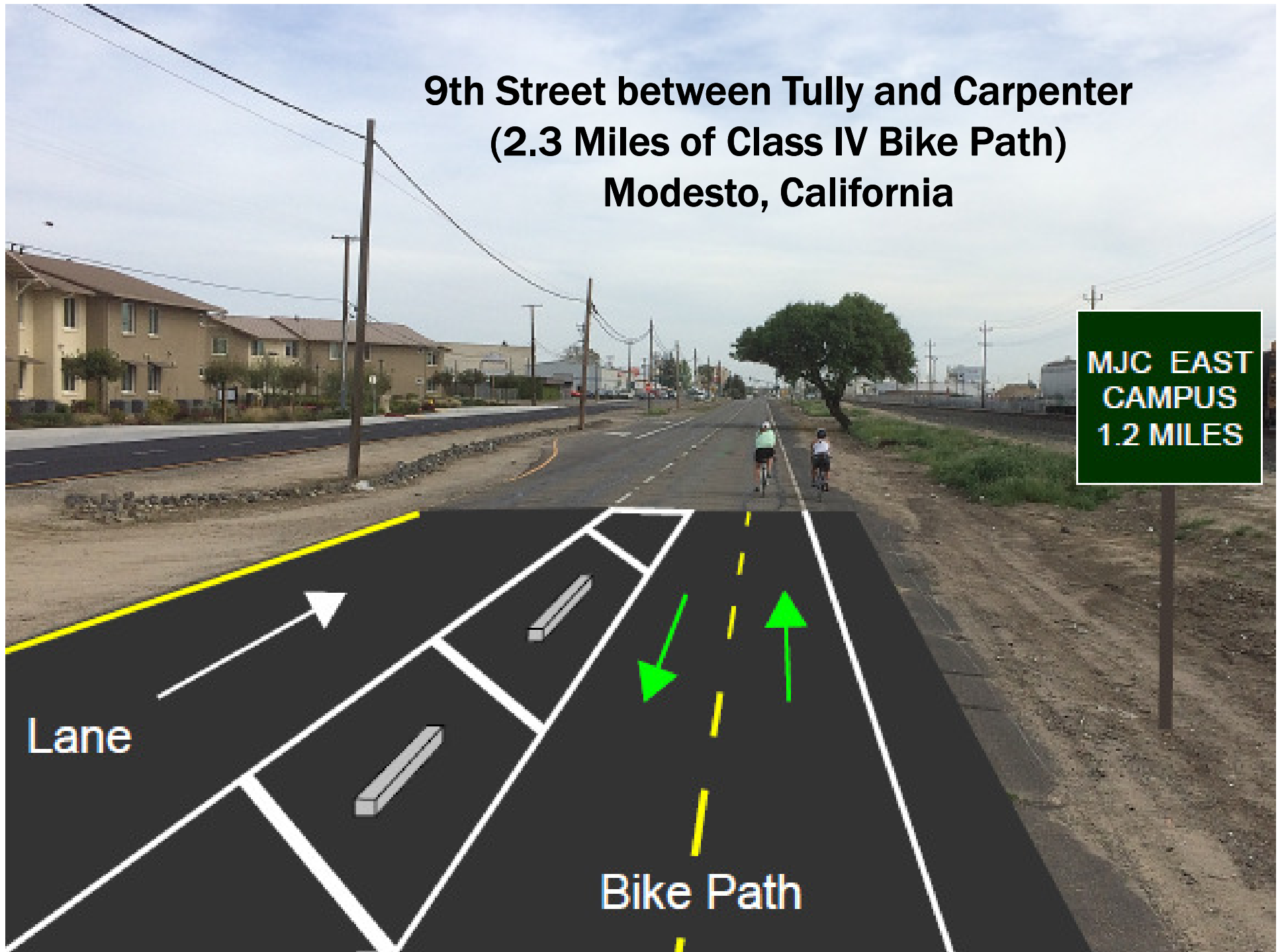
**College Avenue
Between Morris and Coldwell
Modesto, CA**

**College Avenue
Between Roseburg and Coldwell
Modesto, CA**





**9th Street between Tully and Carpenter
(2.3 Miles of Class IV Bike Path)
Modesto, California**



Overview

1. Educate decision makers on “Complete Streets”
2. Engineers and Planners need to work together
3. Create champions in your organization
4. Market and Sell your ideas, use Graphics not Plans
5. Be Tactical, short-term action = long term change
6. Ride the momentum and get stuff Built!

Links:

www.modestogov.com/ced/about/transportation

City of Modesto, Transportation Engineering and Design

Nacto.org

National Association of City Transportation Officials

cal.streetsblog.org

Streetsblog California

Streetmix.net

A graphical tool to design cross-sections

<https://youtu.be/21ngAOICFjE>

Example of how to market your ideas using Youtube

http://issuu.com/streetplanscollaborative/docs/tactical_urbanism_vol_2_final

Tactical Urbanism 2

<https://prezi.com/9rowaqq03aqh/sylvan-avenue-modesto-ca/>

Online Prezi presentations for Sylvan Avenue and MJC Cycle Track

ANY
QUESTIONS
?

Sources:

Streetmix

Tactical Urbanism 2

The Modesto Bee, February 25th 2014

NACTO (National Association of City Transportation Officials)

ITE Journal (Engineers + Planners = Success), June 2014

Streetsblog California, (Modesto, California: A Model for a Bicycle-Friendly City?)