



CivicSpark & CalEnviroScreen 2.0

Tommy Ta

Americorps CivicSpark Member of San Joaquin Valley

August 18, 2015



CivicSpark



CivicSpark is a
Governor's Initiative
administered by the
Local Government
Commission.

"Climate change is a global challenge that requires strong, sustained local action. This program gets young people into communities across California to help reduce emissions and boost energy efficiency."

Governor Jerry Brown



CivicSpark

Why We Are Here

Our objective is to **maximize the number of State dollars invested in the San Joaquin Valley.**

Help determine **urban forest program** needs

Review **existing inventories, policies and plans**

Assist with **CalFIRE Grant** writing process

Coordinate **collaborative partnerships**

Quantify the benefits of urban forestry

Assess the health of the **existing urban forest** and **maintenance needs**



CivicSpark

What is CalEnviroScreen 2.0

Office of Environmental
Health Hazard
Assessment (OEHHHA)

+

California
Environmental
Protection Agency
(CalEPA)

=

California Communities
Environmental Health
Screening Tool
(CalEnviroScreen)

CalEnviroScreen is a screening tool used to identify disadvantaged communities, per Senate Bill (SB 535), for Cap-and-Trade program (AB 32) GHG Reduction Funds

2014-2015 : \$832 million GHG reduction funds

\$200+ million must go to projects in disadvantaged communities

CalEPA designates that top 25% of census tract burden with multiple sources of pollution are considered disadvantage communities



CivicSpark

How To Access CalEnviroScreen 2.0 Tool



CalEnviroScreen 2.0
www.oehha.ca.gov/ej

The Office of Environmental Health Hazard Assessment (OEHHA) on behalf of the California Environmental Communities that are disproportionately burdened by multiple sources of pollution. CalEPA has used the tool.

The tool was updated in October 2014 to include additional data along the US-Mexico border. Informational Press Release - CalEPA Finalizes Major Update of Environmental Health Screening Tool: CalEnviroScreen 2.0

CalEnviroScreen 2.0 Report:

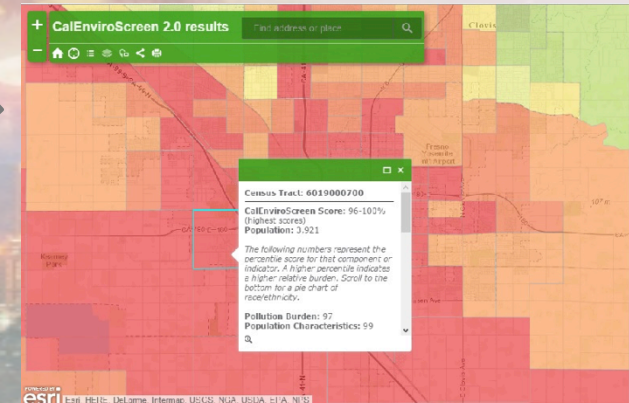
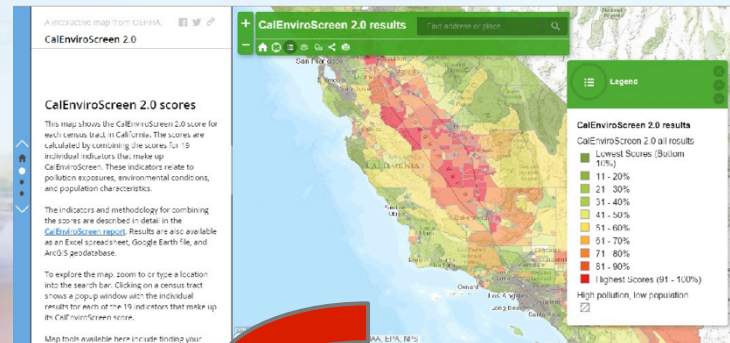
- California Communities Environmental Health Screening Tool Report (CalEnviroScreen 2.0, update)
- Summary of Major Changes in CalEnviroScreen 2.0 (Updated October 2014)
- Instrumento De Evaluación De La Salud Ambiental En Las Comunidades De California, Versión 2
- Principales Cambios en CalEnviroScreen 2.0

CalEnviroScreen 2.0 Mapping Applications and Data:

Just updated October 2014

Click on links to three maps of the overall CalEnviroScreen 2.0 scores, Pollution Burden scores, and

ALL MAPS **MOBILE MAP**

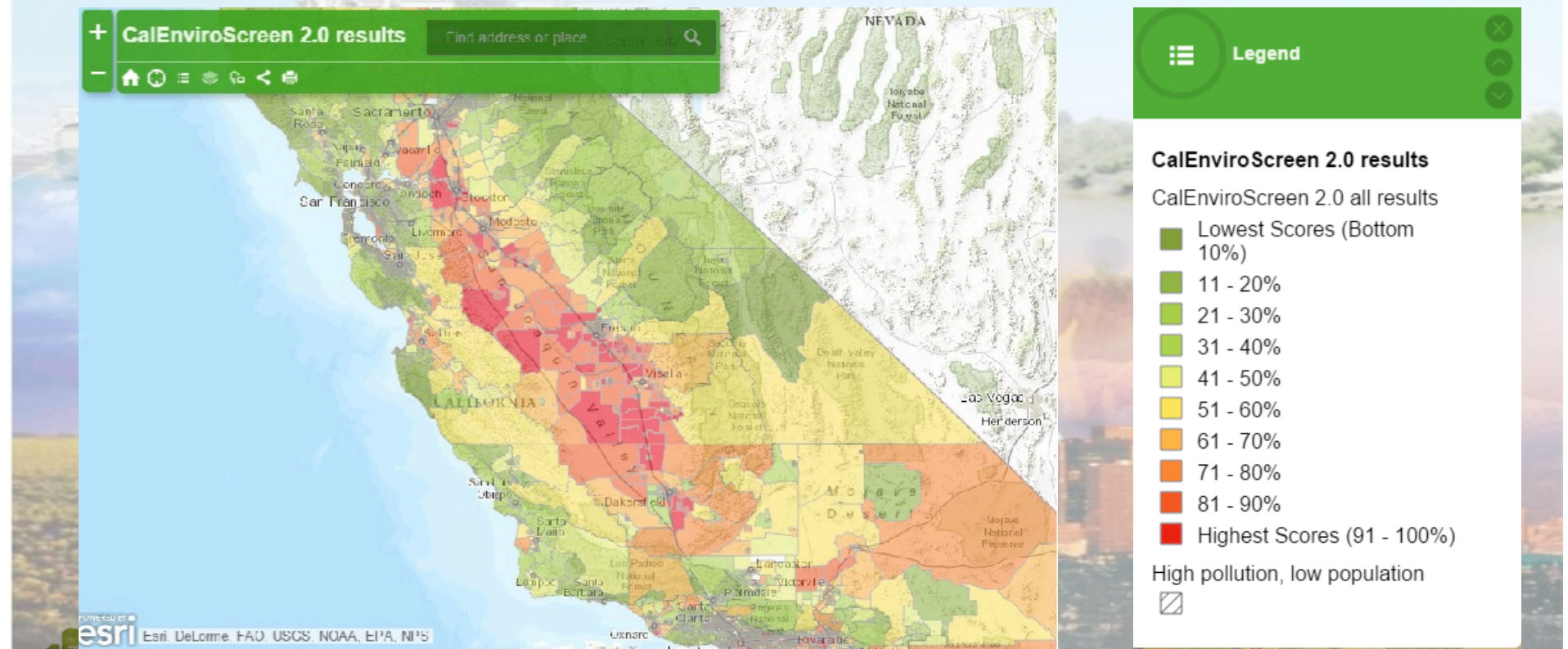


<http://oehha.ca.gov/ej/ces2.html>



CivicSpark

San Joaquin Valley



CivicSpark

CalEnviroScreen For CalFire Grants

California Department of Forestry and Fire Protection (CAL FIRE) set aside funds for grants focusing on “Green Innovations” Urban Forestry and/or Urban Greening Project to further reduce GHG reductions.

Use CalEnviroScreen to determine prospective project eligibility. Prospective project location must have at least 1 census tract this is designated as a disadvantage community (Top 25% Census Tract).

A grant applicant with many census tracts in the Top 25% will be more competitive for CalFire Grants.



CivicSpark



Tommy Ta
AmeriCorps CivicSpark Member
Local Government Commission
tta@civicspark.lgc.org
714-548-5904