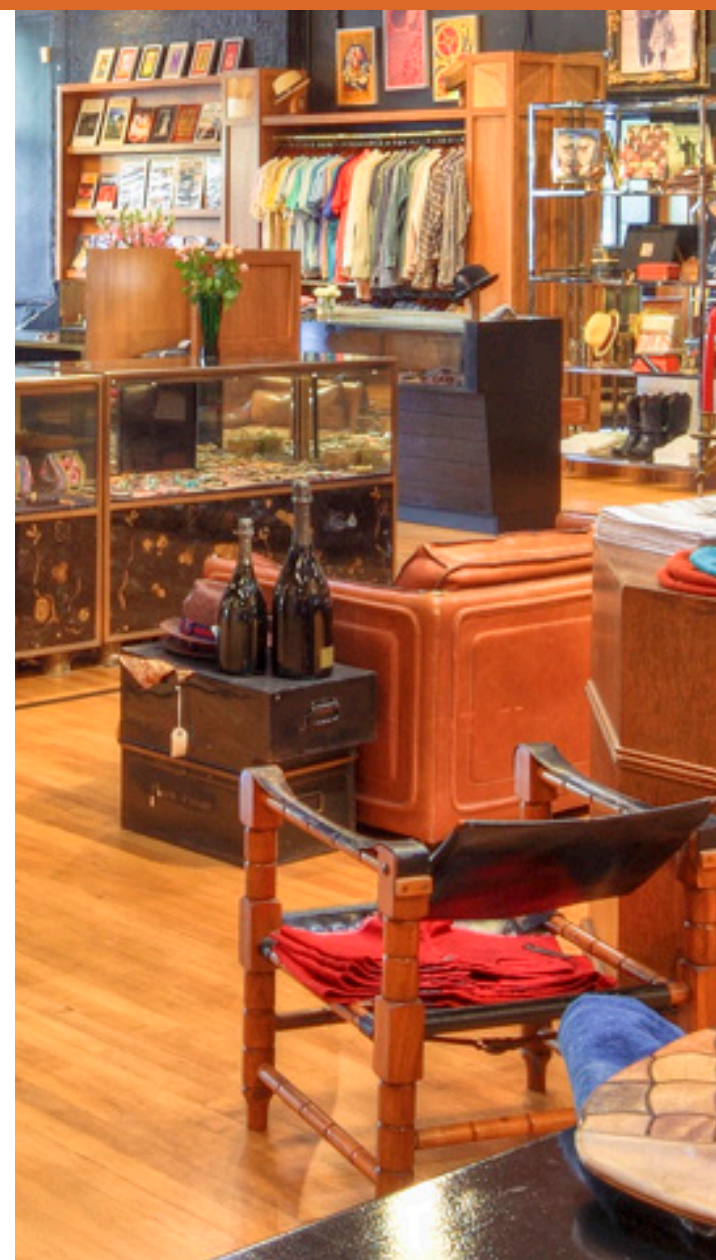




REVITALIZATION STRATEGIES

Local Government Commission





STREET DECK PROGRAM





PARK[ing] Day
Friday September 19
Pine Ave. & 4th St.
Downtown Long Beach

70% of urban open space
is dedicated to cars.
what about open space for people?

Southern California

Editor's picks

LONG BEACH

Parklets hit SoCal

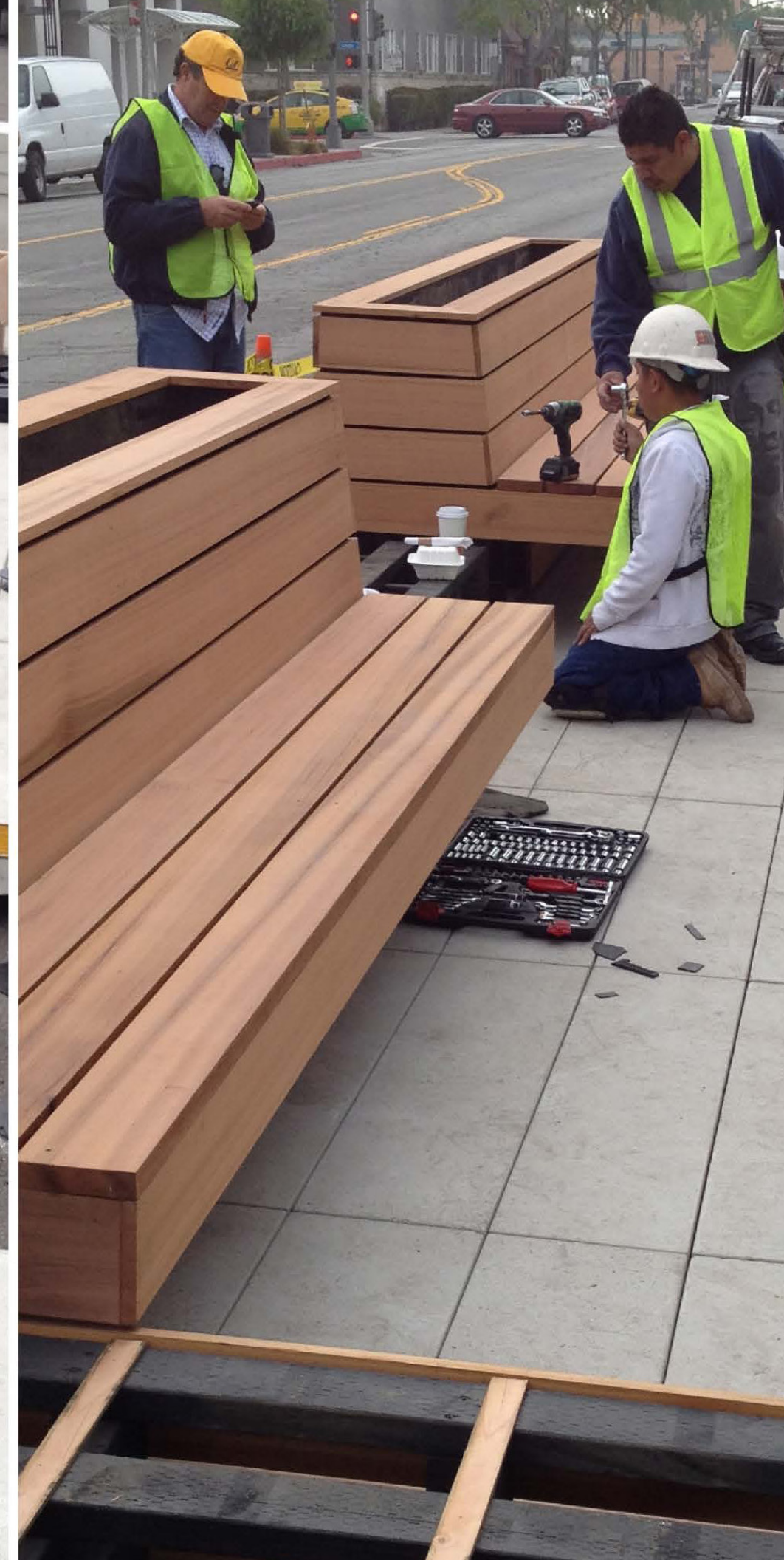
We hate to lose a good parking spot—unless we gain an alfresco dining room. Turning curbside areas into **urban parklets** is trendy in S.F., but here's to Long Beach for introducing the concept to the Southland. The first one is in front of Lola's Mexican Cuisine (2030 E. Fourth St.; 562/343-5506), where a prefab sustainable-wood deck surrounded by tall succulent-filled planters reclaims the street for diners kicking back with ceviche and organic agua fresca. If tables are full, head down the street to two other new parklets, at Number Nine (2118 E. Fourth) and Berlin (420 E. Fourth).



*article from sunset magazine



**CONSTRUCTION COST:
PRIVATE INVESTMENT - \$20,000**



berlin

420

MUSIC LITERATURE ART

420

OPEN

OPEN

berlin



CONSTRUCTION COST:
PRIVATE INVESTMENT - \$18,000



**CONSTRUCTION COST:
PRIVATE INVESTMENT - \$56,000**







CONSTRUCTION COST:

CD2 DISCRETIONARY FUND - \$55,000

PRIVATE INVESTMENT - \$18,000

FACADE IMPROVEMENTS





**CONSTRUCTION COST:
CDBG FUNDING - \$57,750**



PUBLIC PARKING

Johnny Rebi's
SOUTHERN
ROADHOUSE

Johnny Rebi's
SOUTHERN
ROADHOUSE



BBQ Flapjacks Grits Fried Green Tomatoes Catfish Hushpuppies Coddler

HEALTHY
FOOD

LEASE



**CONSTRUCTION COST:
CDBG FUNDING - \$240,000**



AFFORDABLE HOUSING





BEFORE







CONSTRUCTION COST:
TAX CREDIT - \$5,700,000





COMMUNITY CENTER



CONSTRUCTION COST:

LONG BEACH HOUSING DEVELOPMENT COMPANY

HOUSING COMMUNITY DEVELOPMENT

FEDERAL HOME LOAN BANK

LOW INCOME HOUSING TAX CREDIT PROGRAM

CALIFORNIA DEBT LIMIT ALLOCATION COMMITTEE

PRIVATE EQUITY INVESTMENT

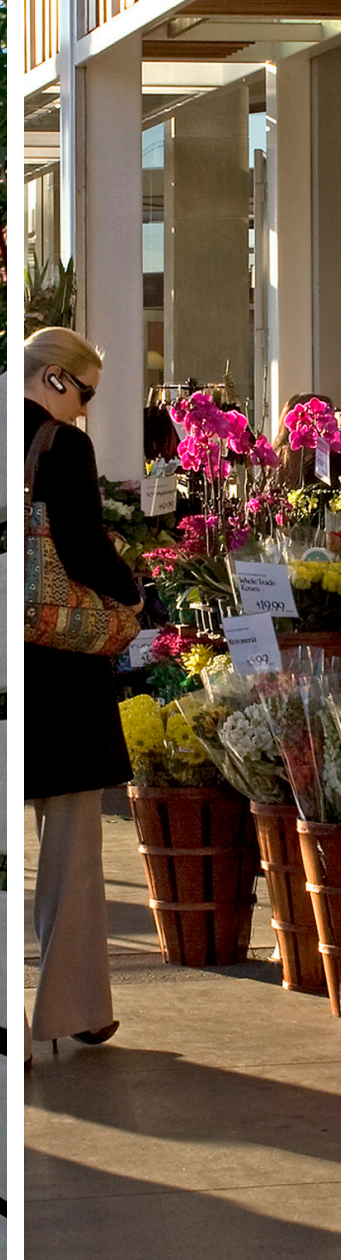
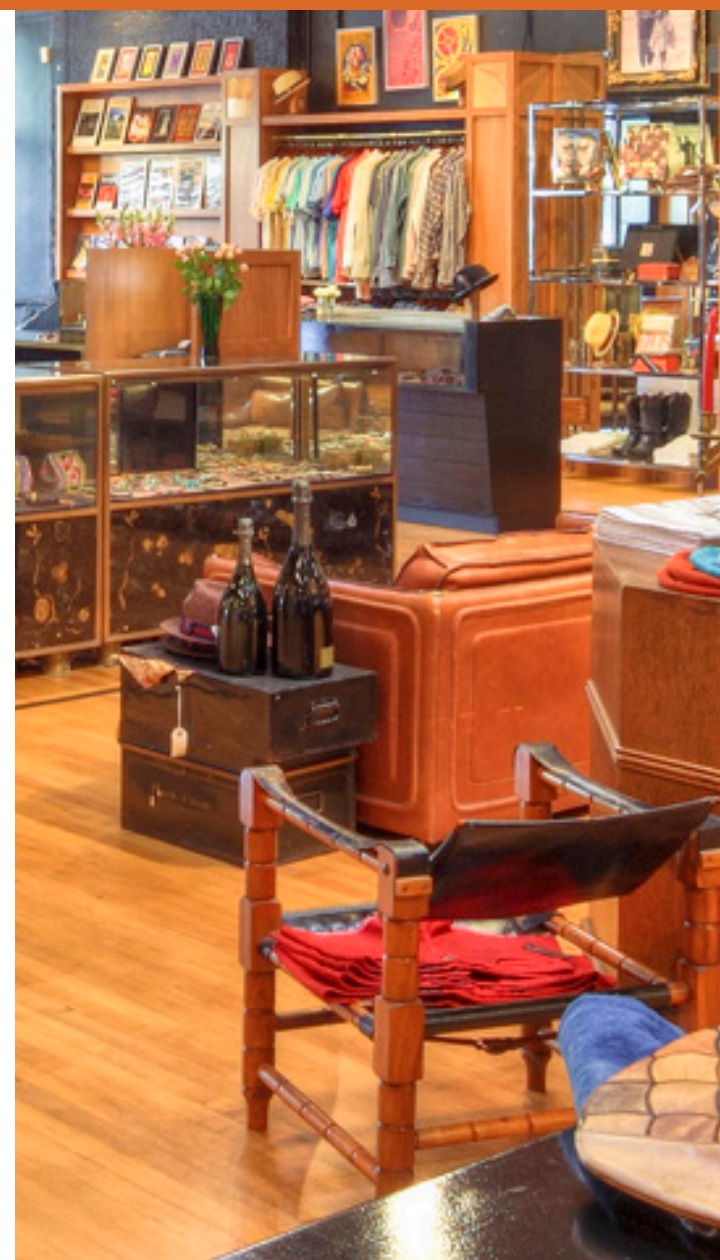
\$32,000,000





THANK YOU

celebrating fifteen years of creating vibrant communities



STUDIOELEVEN
AT P+R ARCHITECTS