

ENERGY EFFICIENCY IN EXISTING BUILDINGS THROUGH 'SMART' CONTROLS



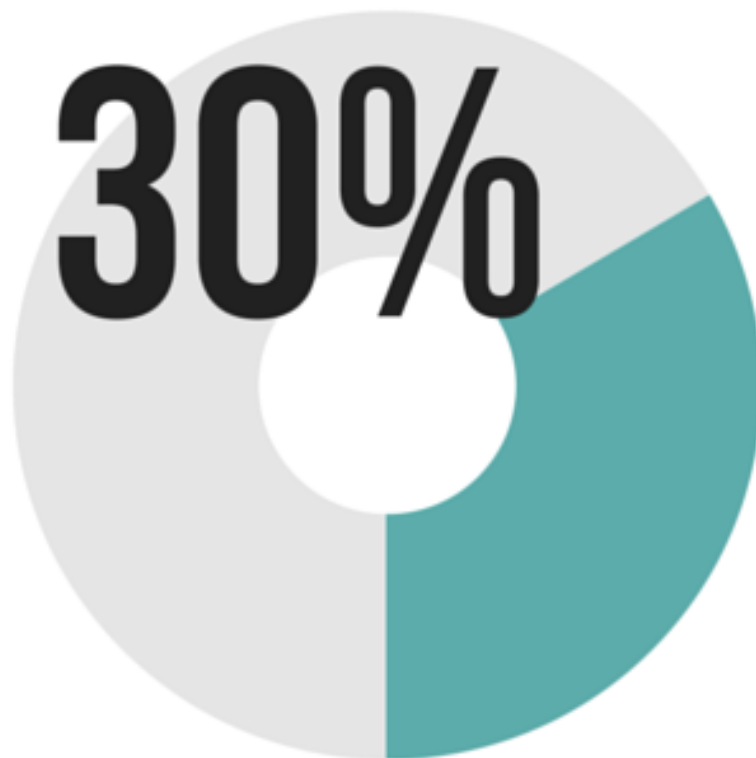
**85-90%
OF EXISTING
BUILDINGS
WILL STILL BE
STANDING BY 2030**





LIGHTING

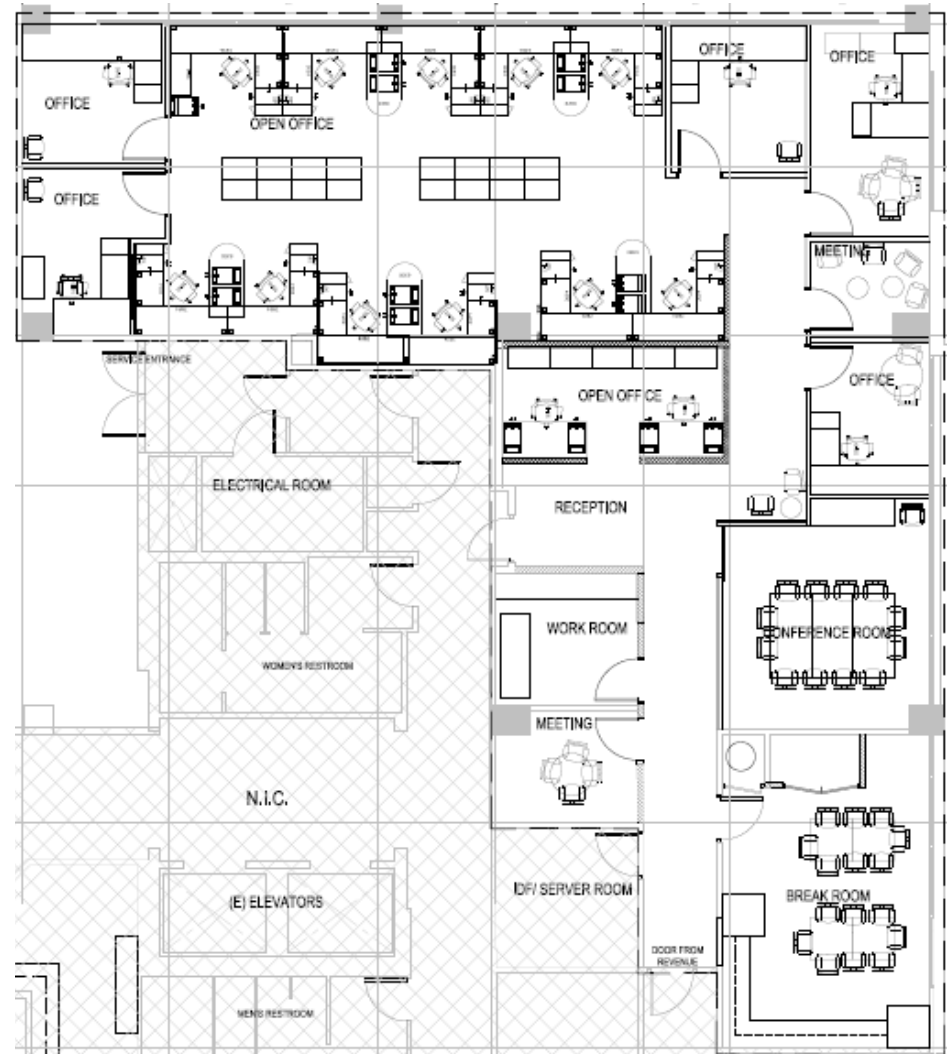
**CONSUMES
APPROXIMATELY
OF COMMERCIAL
ELECTRICITY**



**2,800 SF FT
TENANT IMPROVEMENT IN
LEASED SPACE**

**DEMONSTRATE GREEN
BUILDING DESIGN, STRATEGIES
AND TECHNOLOGY**

**TOTAL PROJECT BUDGET:
\$207,537**



UP TO 60% OVER T12

**UP TO 95 LUMENS
PER WATT**

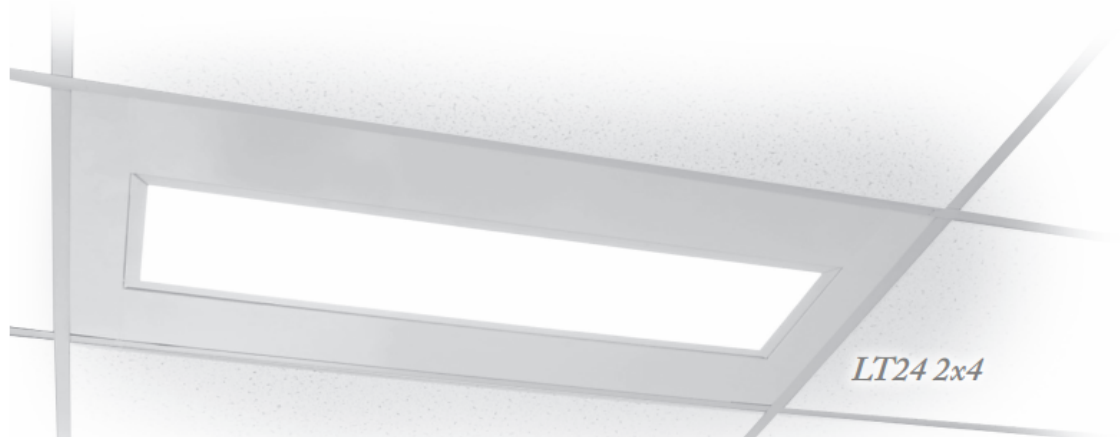
**FITS INTO ANY
STANDARD AND SLOT-
GRID CEILING**



LT24 2x2



LT14 1x4



LT24 2x4

CUSTOM SETTINGS

**INDEPENDENT
OPERATION**

REMOTE MONITORING

UTILIZATION TRACKING





DIMMING

**CUSTOM PRESET
OPTIONS**

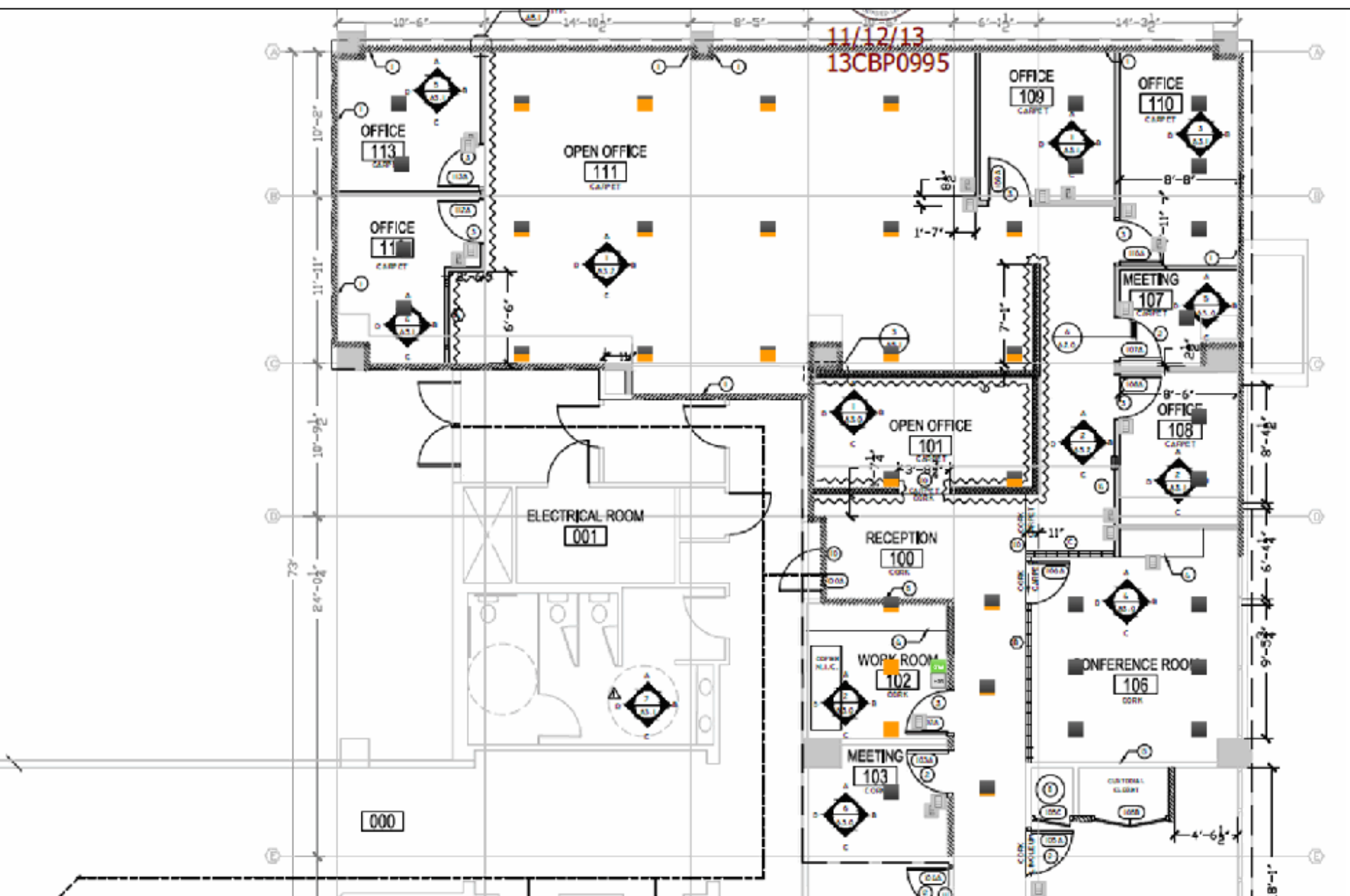
**CONTROL UP TO 100
FIXTURES**

**NO HARDWIRING
REQUIRED**





Find: Override Light Level:



Energy Consumption
Floor Plan
Devices
Settings
Events

Unit
\$ kWh CO2

Period
Day Week Month Year
From: 06/02/2016 To: 06/03/2016
Apply
Save as PDF

Period Savings
82%

Task Tuning
Daylight Harvesting
Occupancy

25.9 kWh

Current Savings
64%

Task Tuning
Daylight Harvesting
Occupancy

Load
Current 474 W
Period Peak 504 W
Current Baseline 1.3 kW

Energy Usage
Electricity (kWh) for Jun 02, 2016 11:00 AM to Jun 03, 2016 10:00 AM

CITY OF SANTA MONICA > CITY OF SANTA MONICA > 1717 4th Ave > 1st Floor

Time	Energy Usage (kWh)	Daylight Harvesting (kWh)	Task Tuning (kWh)
11 AM	0.45	0.25	0.65
12 PM	0.43	0.35	0.62
1 PM	0.44	0.35	0.61
2 PM	0.42	0.35	0.63
3 PM	0.39	0.34	0.67
4 PM	0.46	0.25	0.69
5 PM	0.46	0.20	0.74
6 PM	0.42	0.23	0.75
7 PM	0.28	0.42	0.70
8 PM	0.13	0.61	0.76
9 PM	0.34	0.32	0.74
10 PM	0.10	0.65	0.75
11 PM	0.02	0.78	0.70
12 AM	0.02	0.78	0.70
1 AM	0.02	0.68	0.70
2 AM	0.02	0.68	0.70
3 AM	0.02	0.68	0.70
4 AM	0.02	0.68	0.70
5 AM	0.02	0.68	0.70
6 AM	0.02	0.68	0.70
7 AM	0.02	0.75	0.73
8 AM	0.18	0.67	0.75
9 AM	0.46	0.34	0.70
10 AM	0.50	0.25	0.65



MEET NEAL

**NEAL LIKES TO SAVE
ENERGY AND TURN OFF
LIGHTS**

**WHEN NEAL TURNS OFF
LIGHTS, GARRETT'S
AUTOMATED CONTROLS
GET OVERRIDDEN**



**SMART DESIGN & CONTROLS
CAN ACHIEVE ENERGY
EFFICIENCY, BUT HAVE
PITFALLS THEMSELVES**

**USERS CAN INFLUENCE THE
EFFICACY OF YOUR ABILITY TO
SAVE ENERGY**

**DESIGN SHOULD KEEP USERS
IN MIND OR TAKE THEM OUT OF
THE EQUATION**

THANKS!

GARRETT.WONG@SMGOV.NET
CLIMATE & ENERGY



CITY OF SANTA MONICA
A Sustainable Community
sustainablesm.org