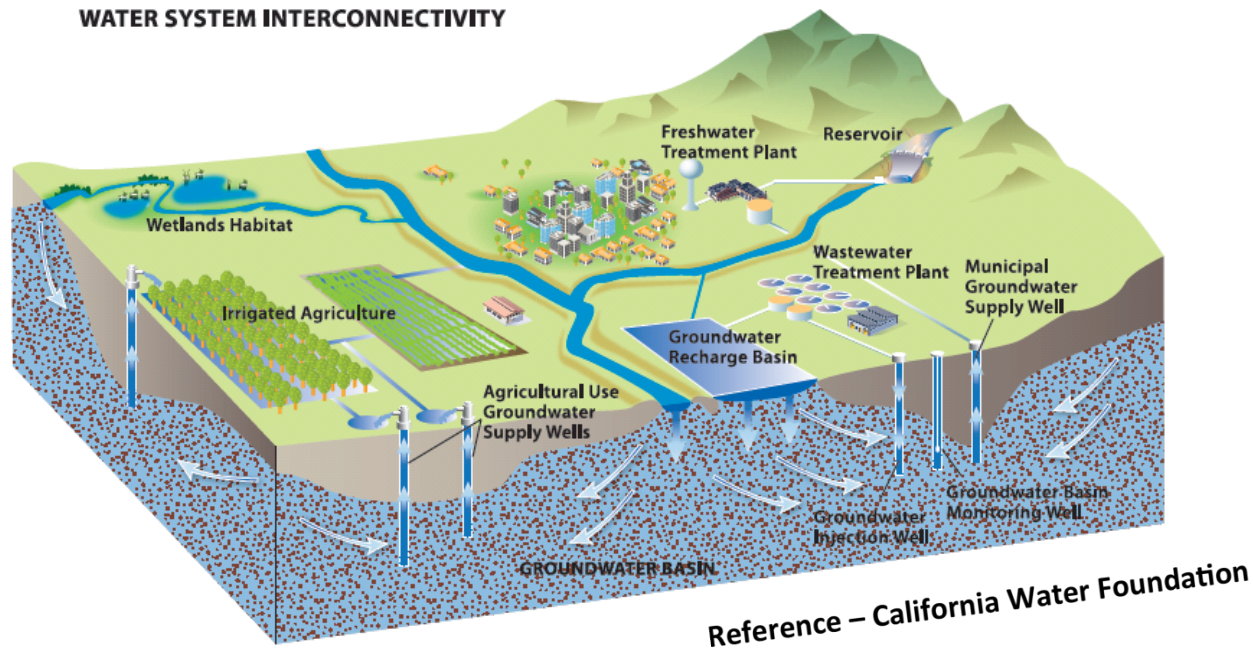


Sustainable Groundwater Management Act in Sonoma County



Grant Davis, General Manager, Sonoma County Water Agency
“Building Livable Communities”

25th Annual Yosemite Conference for Local Elected Officials
March 10-13, 2016, Yosemite National Park

SCWA provides Wholesale Water Supply

Serving approximately 600,000 residents in Sonoma & Marin counties

Main Water Sources

- Lake Mendocino
- Lake Sonoma
- Russian River

Water Contractors

- Santa Rosa
- Petaluma
- Sonoma
- Cotati
- Rohnert Park
- Town of Windsor
- North Marin Water District
- Valley of the Moon Water District
- Marin Municipal Water District



What is happening in Sonoma County?



- ☐ Stakeholder assessment conducted
- ☐ Basin Advisory Panels providing input
- ☐ Formation of Countywide Staff Working Group of GSA-eligible agencies
 - Developed GSA governance principles
 - Created outreach plan, website, monthly newsletter
 - Public workshops held in November/December
- ☐ Formation of County/Water Agency Ad Hoc
 - Providing policy guidance, educating board members and elected officials
 - Supervisors/Directors Susan Gorin & David Rabbitt

Groundwater Plays Important Role in Building Resiliency

Alexander Valley Study completed 2006

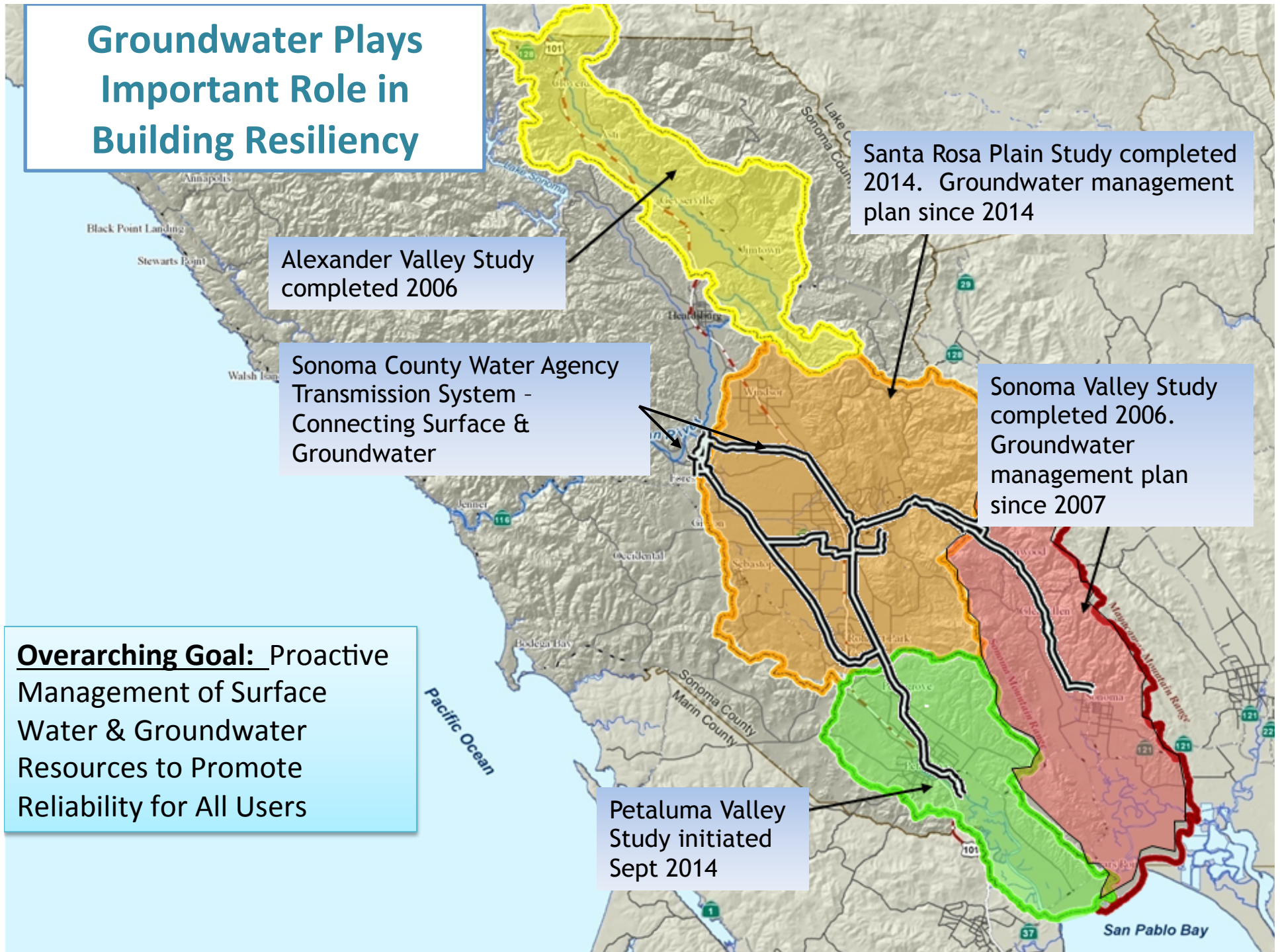
Sonoma County Water Agency Transmission System - Connecting Surface & Groundwater

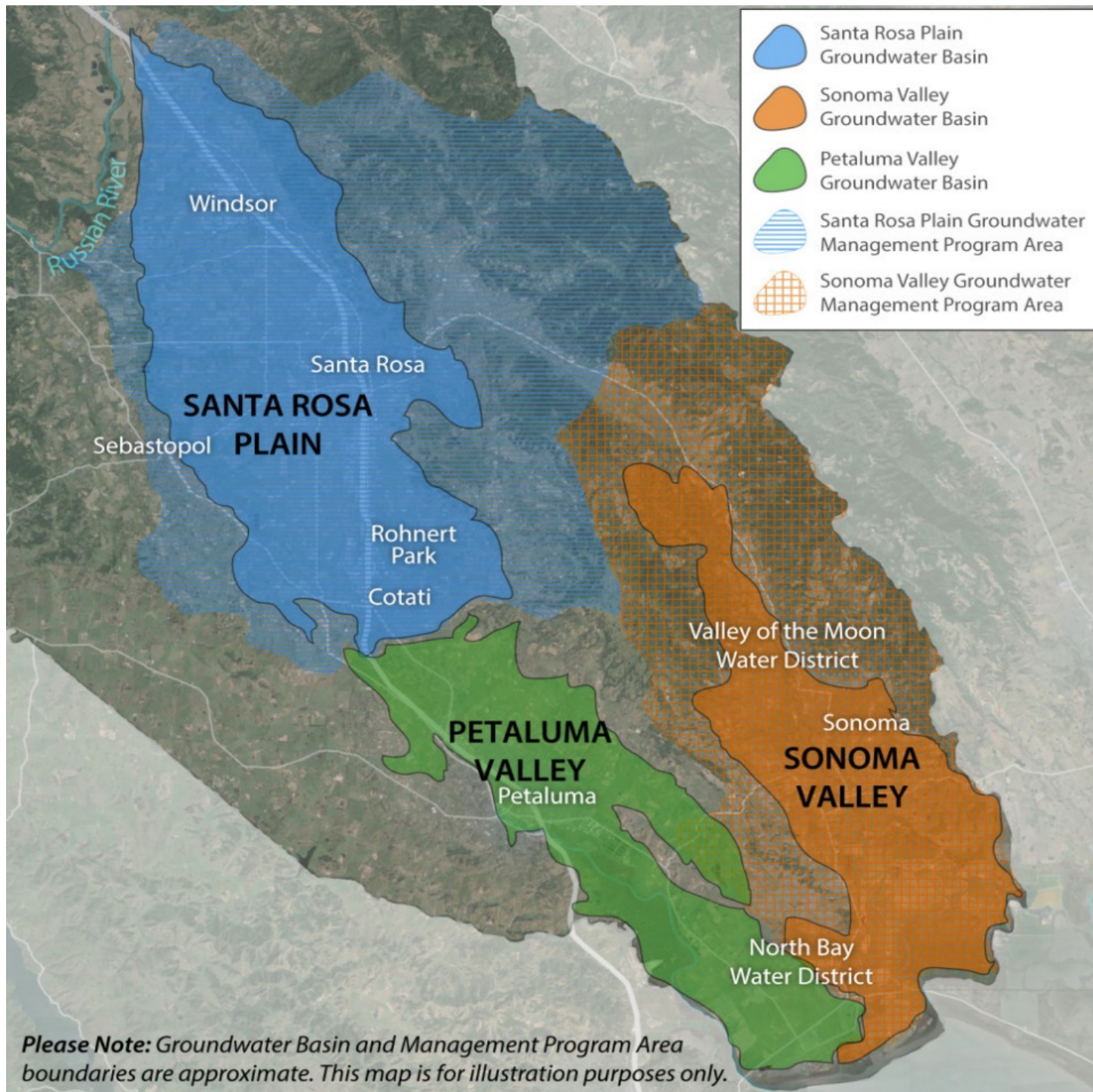
Santa Rosa Plain Study completed 2014. Groundwater management plan since 2014

Sonoma Valley Study completed 2006. Groundwater management plan since 2007

Overarching Goal: Proactive Management of Surface Water & Groundwater Resources to Promote Reliability for All Users

Petaluma Valley Study initiated Sept 2014





SGMA Steps to Groundwater Sustainability



* DWR may grant up to two, five-year extensions on implementation upon showing of good cause and progress

Ongoing Challenges and Representation

- ❑ We are strong supporters of SGMA and want to make sure:
 - All groundwater users are fairly represented;
 - All users are participating;
 - All interests are represented in a fair and equitable process.



Ongoing Challenges and Representation

- ❑ SGMA is complicated!
- ❑ Draft regulations for Groundwater Sustainability Plans provide insight into law's complexity and reach.
- ❑ Land use and water interests don't speak the same language.



Questions?



**Resources can be found at:
www.sonomacountygroundwater.org**

**Contact:
Grant Davis
707-528-2020
Grant.davis@scwa.ca.gov**