

Yosemite Policymakers Conference

3/19/17

# Food to Share

Fresno Metro Ministry

Keith Bergthold, *Executive Director*

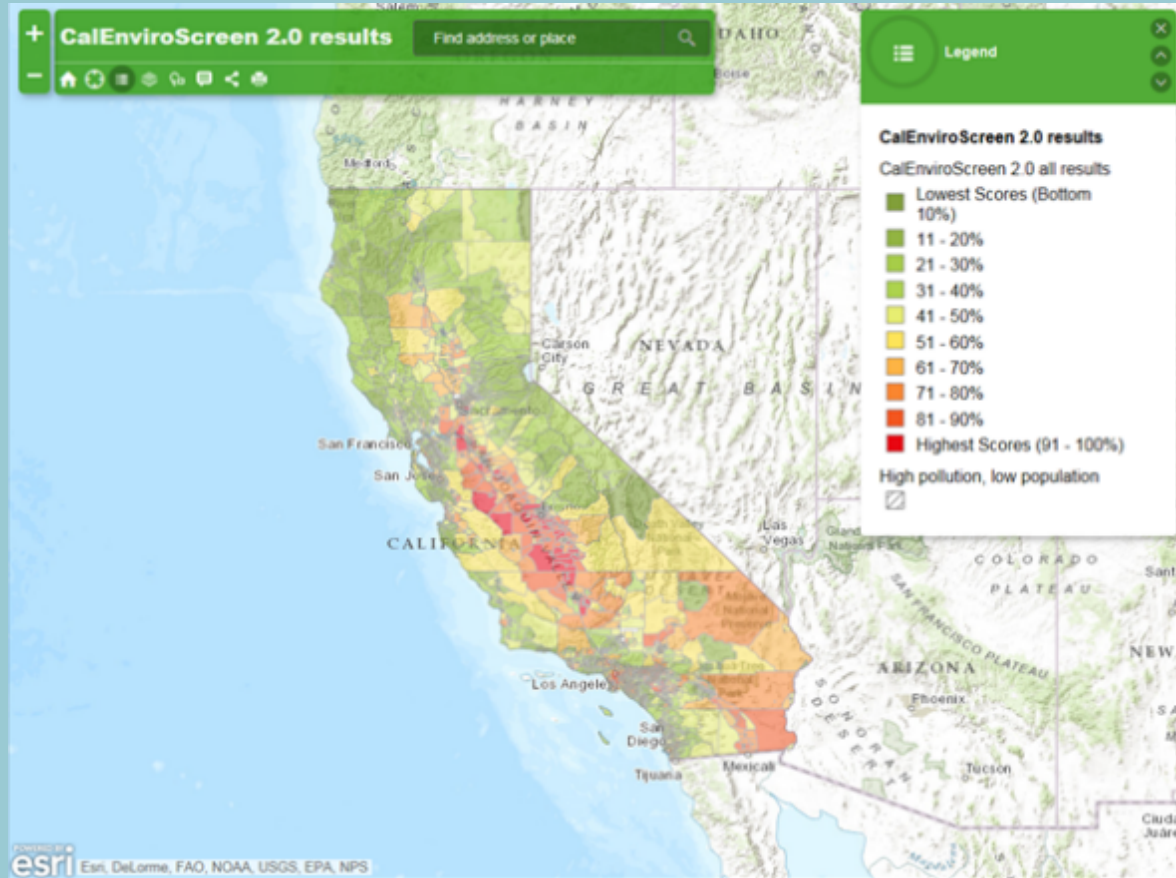


— *Wasted Food is* —

**WASTED POTENTIAL**

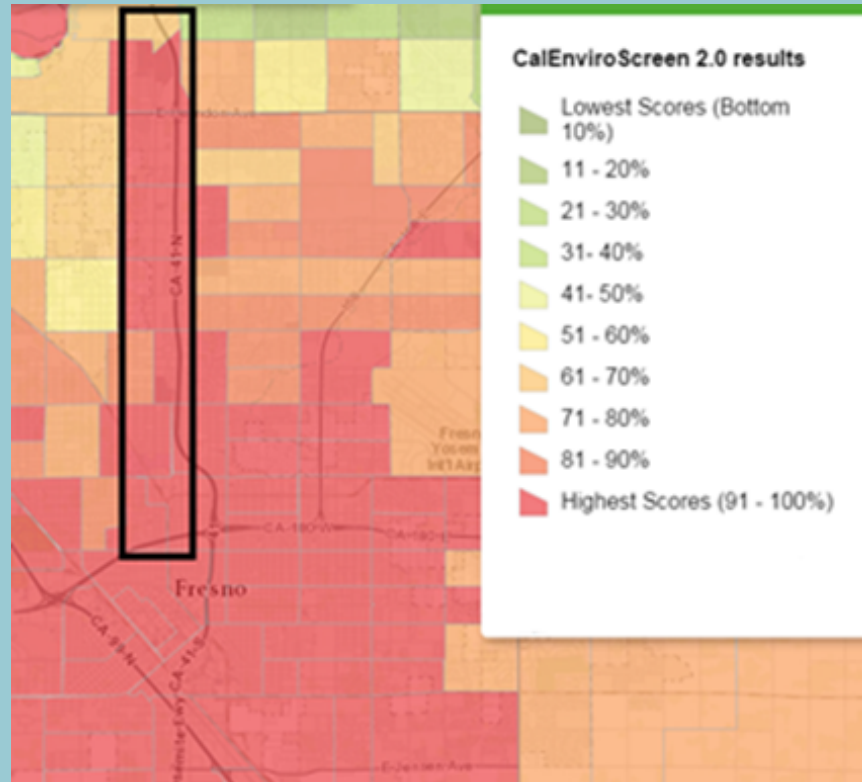
**FOR OUR KIDS, FOR OUR ECONOMY, FOR OUR ENVIRONMENT**

# CalEnviroScreen – Statewide Regional Context

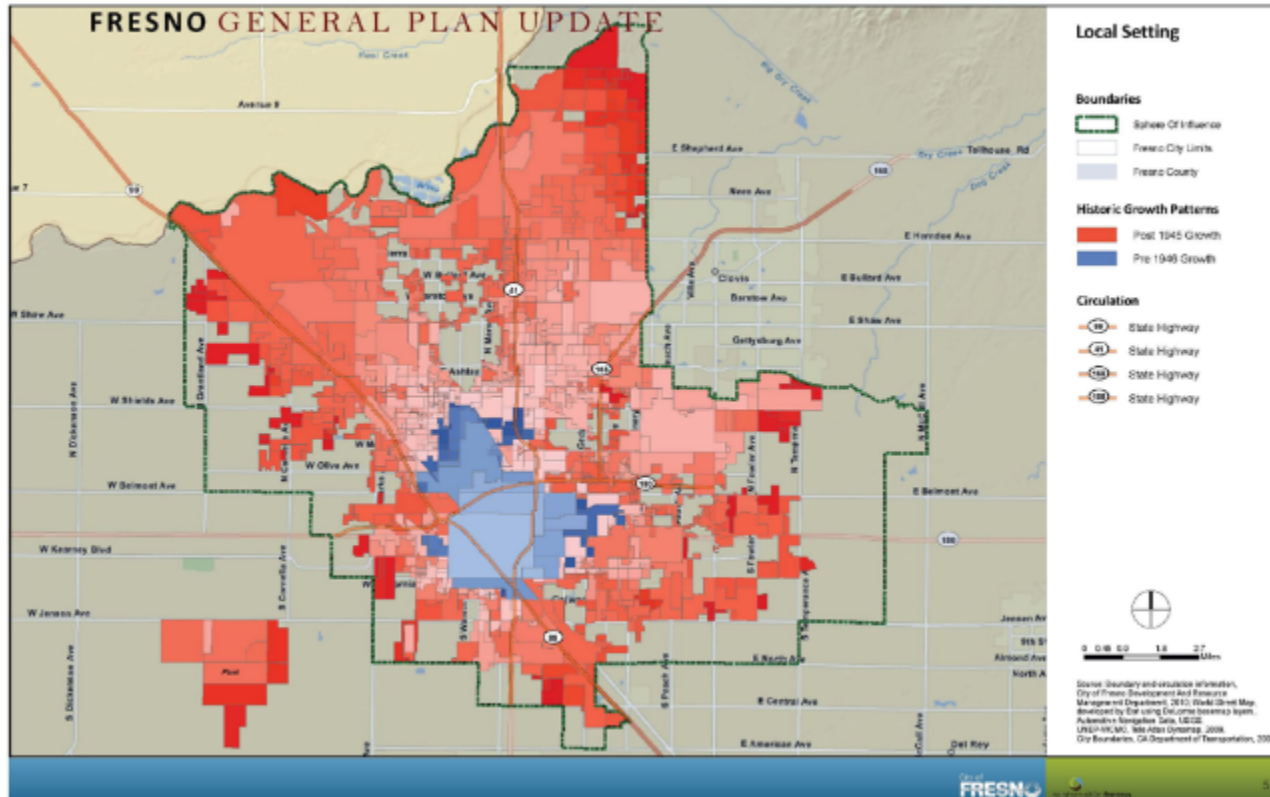


# CalEnviroScreen –

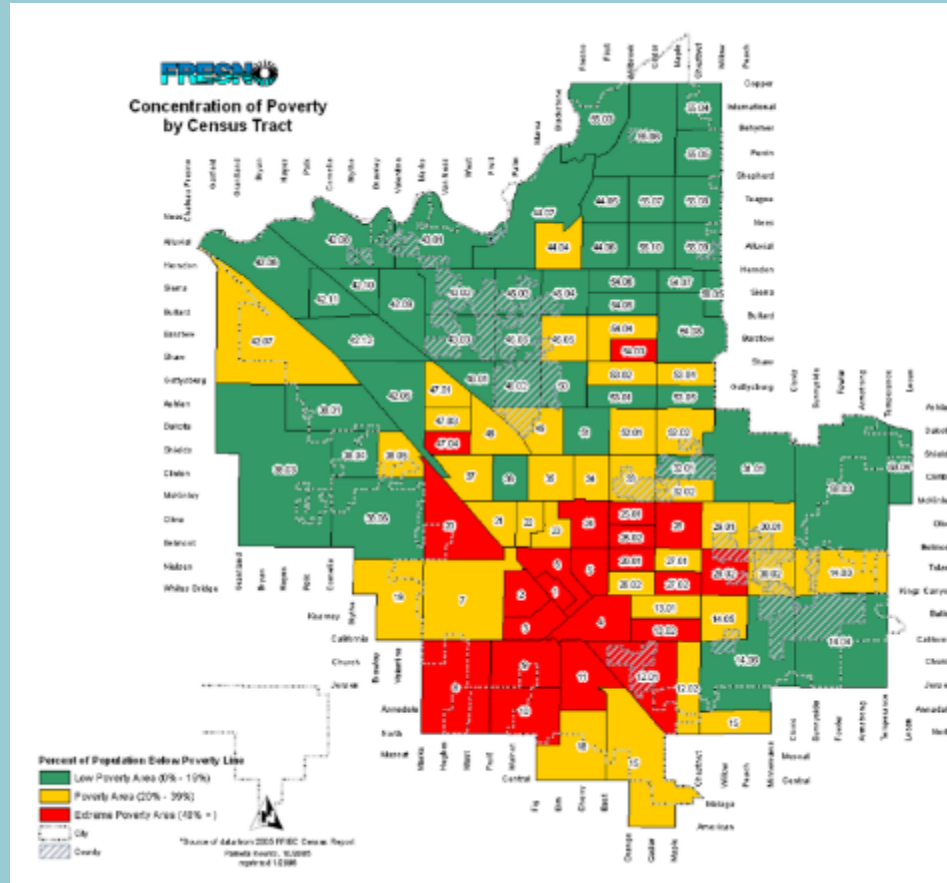
## Better Blackstone Project Area



# Historical Growth of Fresno



# Concentration of Poverty by Census Tract



# Fresno is the 2<sup>nd</sup> most food insecure metropolitan city in the US...

*— Wasted Food is —*  
**WASTED POTENTIAL**  
**FOR OUR KIDS, FOR OUR ECONOMY, FOR OUR ENVIRONMENT**

Hunger hurts everyone, but it's especially devastating to children. Getting enough nutritious food is critical to children's physical and emotional development and their ability to excel academically. When we combat child hunger and provide nutrition, we cultivate children's potential, and help them to become tomorrow's leaders and innovators who positively shape the Valley's future.

*— Did You Know? Facts About Fresno's Hunger —*

**MORE THAN 64,000 PEOPLE** in Fresno have empty refrigerators every month

80%

of them do not have enough fresh bread, fruits and veggies

71%

of them have small children and not enough milk

2012 Access to Health Care

**16.6% FOOD INSECURITY** Among Fresno County Residents

16.6%

**Total Population 939,605**  
**Those with Food Insecurity 155,600**

© 2012 National Center for Multiple Needs Inquiry

**26 MILLION POUNDS OF FOOD** are needed this year in Fresno County

**Proteins**

500,000	2,015,000
\$1,250,000	\$2,750,000

**Fruits & Vegetables**

8,000,000	8,000,000
\$2,000,000	\$16,000,000

**Carbon proteins**

2,000,000	2,000,000
\$4,000,000	\$4,000,000

**Fats**

200,000	100,000
\$1,000,000	\$100,000,000

2014 Fresno Hunger Count

# ...and we waste food in every segment of the food system

— *Positive Changes Can Be Made Right Now* —

**WE NEED TO ENCOURAGE AND SUSTAIN AN INTEGRATED FOOD SYSTEM NETWORK.**

Food waste occurs at all stages of the food system with significant opportunities for food recovery and waste diversion at each stage.

## UP TO 40% OF FOOD IS WASTED

**That is grown, processed and transported in the U.S.**

2012 BSR Food Waste Assessment



A simplified path for program participants to make multiple connections, build relationships, and participate in community service programs dedicated to feeding the hungry and reducing greenhouse gas emissions. Partners share three common goals, and work together to improve the system's communication, collection methods and sharing network.

### Goal #1

Increase the amount of safe, nutritious food donated to those in need

### Goal #2

Reduce the amount of food waste generated

### Goal #3

Recycle unavoidable food waste, diverting it from landfills

Agricultural Production

Manufacturing and Processing

Distribution and Logistics

Food Outlets and Restaurants

The Consumer at Home

## How It Will Work

We're all doing our best to share what we have with others less fortunate. But it's no secret that the current system could be more efficient at securing, transporting and delivering food to those who need it faster and with less time demands made on everyone. And when food can't be eaten, there are ways to repurpose most of it into animal feed and renewable energy instead of sending it to our burgeoning landfills. You can help re-shape the growing network of donors, providers and recipients to ensure our community and local economy thrives and we reduce our emissions impact substantially.

### 1. COLLECT

The Network provides access to wholesome nutritious foods by collecting edible food from:

- Growers and Packers
- Supermarkets
- Gleanings (crop remnants)
- Food Distributors
- Farmers Markets
- Hospitals
- Food Service Facilities
- Institutional Cafeterias
- Restaurants
- Food Institutions

### PARTNER PORTAL

FOOD  
SYSTEM  
NETWORK  
EXCHANGE  
WEBSITE

### 2. SHARE

And sharing food with:

- Churches
- Neighborhood Schools
- Community Food Kitchens
- Partnership to Improve Community Health - PICH
- Pantries
- Community Distribution Centers
- Community Centers

### 3. DIVERT WASTE

The network supports Colony Energy Partners and Caglia Environmental for diverting ag and green waste along with inedible food away from landfills and into production of low carbon renewable energy systems.





# 80+ Food Receiver Organizations

## 40 Food Donors

### *Help Shape A New Network*

**TO RECOVER FOOD AND REDUCE WASTE!**

The Food to Share Partnership Network offers many different ways for our community to come together to fight hunger, reduce environmental impact and build a stronger economy.



**Donate food, make a financial contribution, volunteer, or attend our workshops to help shape and strengthen the systems in place.**

▶▶▶▶ To learn more please visit [www.fresnetmin.org/programs](http://www.fresnetmin.org/programs) or call

**559-485-1416**



THE BENNETT FAMILY  
FOUNDATION FUND  
at



Central Valley  
COMMUNITY  
FOUNDATION

Formerly the Fresno Regional Foundation  
Effective Philanthropy.  
Smarter Connections.

FRESNO  
HUNGER COUNT



Local  
Government  
Commission



FOOD  
RECOVERY  
NETWORK  
FRESNO STATE CHAPTER

RCI

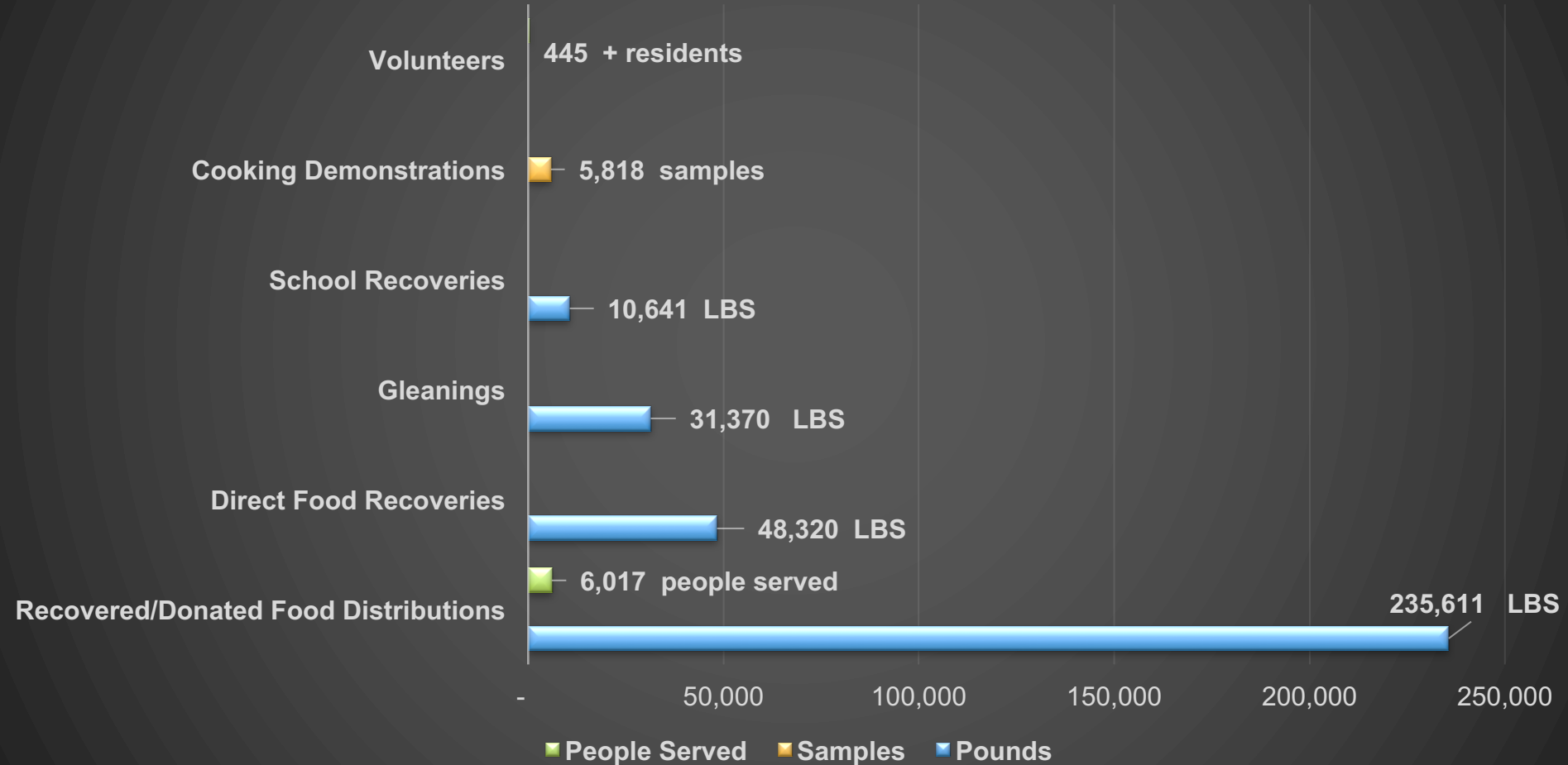
REGENERATE CALIFORNIA INNOVATION



A Member of FRESNO AREA

JUDY CORBETT  
CONSULTANT

# Food to Share Quantitative Data



# *Food Distributions and Canvassing*

*Distributed 235,611 Pounds*

*Served 6,017 Residents*





# *Central Unified School District Food Recovery*

## *Recovered 10,641 pounds*



# Join the *Glean Team!*

**Gleaned 31,370 Pounds**



# Cooking Demonstrations

5,818  
Samples  
Handed Out



# *Volunteers*

445 +  
*Volunteers*



*Fresno Metro Ministry  
Launches Cooking Matters*



*Teaching Nutrition  
Education +  
Cooking Skills*





*Harvest more oranges than you can eat?*

## Join the Glean Team!

*Squash taking over your garden?*

***Food to Share can help recover excess food and distribute to families in need of fresh fruits and vegetables!***

Do you have fruit trees that go unpicked or a garden that provides more than your family can consume? Join the Food to Share "Glean Team" in recovering excess food from backyards and getting it to neighborhoods that need it most.

Help alleviate hunger in Fresno by offering your trees to be gleaned or by volunteering at an upcoming gleaning event!



For more information, call Fresno Metro Ministry's Food to Share program at (559) 485-1416 or email [tom@fresnometmin.org](mailto:tom@fresnometmin.org).



**POST A DONATION**



**CLAIM A DONATION**



**GET INVOLVED**

— *Wasted Food is* —  
**WASTED POTENTIAL**

FOR OUR KIDS, FOR OUR ECONOMY, FOR OUR ENVIRONMENT

***Fresno is the 5th Most Food Insecure City in the Nation.***

## *Current Food Donations Available Now*

Lorem ipsum dolor sit amet, consetetur elipsum. Praesent vestibulum molestie lacus. Aenean nonummy hendrerit. Phasellus porta. Fusce suscipit varius mi. Sociis tunc et magis dis parturient montes, nascetur ridiculus mus.



**Box of Tomatoes**

Posted at 1:27 PM on March 7, 2016  
(CLAIMED)



**Box of Mixed Produce**

Posted at 11:56 AM on March 4, 2016  
(CLAIMED)



**Pizza and Chicken -- pre-cooked**

Posted at 5:35 PM on February 29, 2016  
(CLAIMED)



**Clam Chowder**

Posted at 5:12 PM on December 22, 2015  
(CLAIMED)



## Local Food Programs

Use our map to find meal services and distribution sites.

Map Satellite

Map data ©2016 Google 5 km

Built with ZeeMaps

Page 1 of 1

### Name

- 1 Beautiful Zion
- 4 Breaking Free Revival Center
- 5 Bulldog Pantry
- 6 Butler Church
- 7 Butler Church
- 8 Butler Pentecostal Church
- 9 Butler Pentecostal Church
- 10 California Hotel
- 11 Catholic Charities
- 12 Catholic Charities
- 13 Christian Fellowship Center
- 14 Clovis Christian Community
- 15 Clovis First Assembly of God
- 16 Clovis First Assembly of God

- All
  Hot Meal Program
  Food Pantry
  Food Distribution

# Fresno Food Security Network

-Systems Change Design Workshop March 7, 2016



# Fresno Food Security Network

-Connecting to Solve the Fresno Food Insecurity Puzzle

-September 16, 2016



# Fresno Food Security Network



Fresno Food Security Network Presents

## **Connecting to Solve the Fresno Food Insecurity Puzzle**

A Workshop to Confirm Goals, Strategies, and Leadership for Action

**Friday, April 28, 2017**

**12-3 PM**

**Parc Grove Commons**

**2674 E Clinton Ave, Fresno, CA 93703**

Next Steps for Healthy Food System

Webinar

# Food to Share

Fresno Metro Ministry

Advice or Questions?



Keith Bergthold

*Executive Director*

*keith@fresnometmin.org*

559-485-14716

