

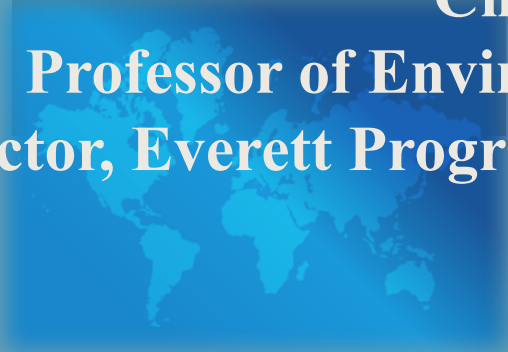
# Inclusive and Sustainable Growth

Leveraging Economic Opportunities  
for all

Chris Benner, Ph.D.

Professor of Environmental Studies and Sociology

Director, Everett Program for Technology and Social Change



UNIVERSITY OF CALIFORNIA  
**SANTA CRUZ**

**everett** program  
DIGITAL TOOLS FOR SOCIAL INNOVATION

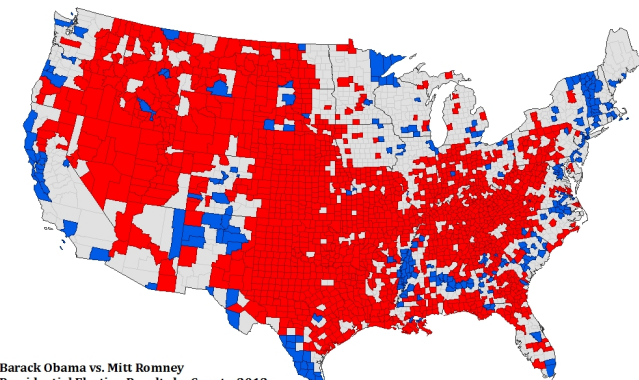
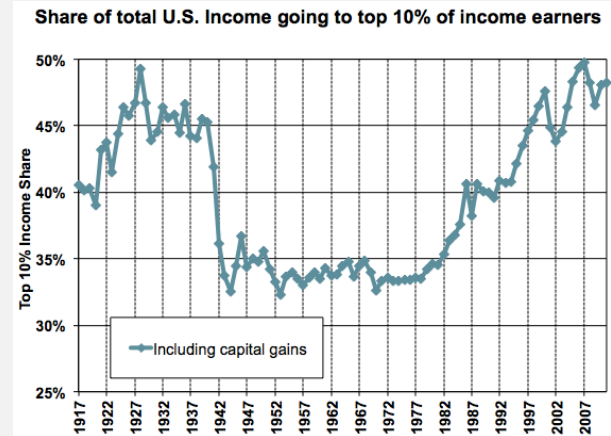
# Challenges of Contemporary America

**Jobs crisis** linked with both stagnant wages and slow job growth

**Inequality crisis** with unprecedented levels of inequality

**Political crisis** associated with not just partisanship but social, spatial, and information fragmentation

Intersecting problems reinforce each other



Blue Democratic landslide county  
Red Republican landslide county  
Grey Competitive Counties (margin less than 20%)

# Equity Good For Growth, *But HOW AND WHY???*

**Table 2. Factors' Impact on Regional Economic Growth**

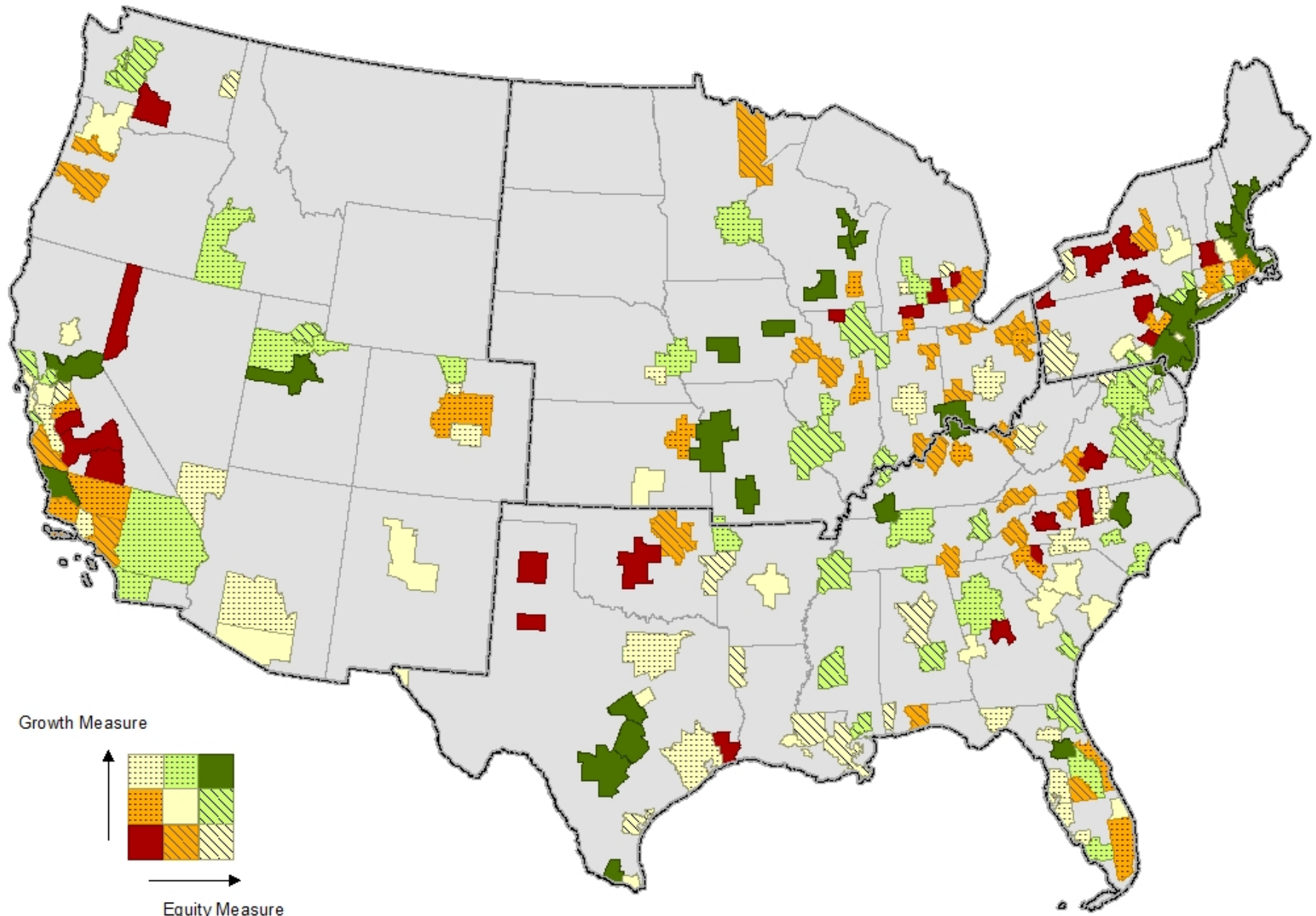
Factor	Per Capita Income	Employment	GMP	Productivity
Skilled Workforce and R&D	0.00333			0.00134
Technology Commercialization	0.00374		0.00211	0.00232
Racial Inclusion & Income Equality	0.00104	0.00208	0.00357	0.00138
Urban Assimilation		0.00143	0.00276	0.00126
Legacy of Place		-0.00748	-0.00917	-0.00136
Business Dynamics		0.00237	0.00281	
Individual Entrepreneurship		0.00200	0.00180	
Locational Amenities	0.00222			
Urban/Metro Structure		0.00129	0.00218	

136 Metro areas, 4 growth measures, 9 broad indicators with 38 different variables

Source: Fund for our Economic Future, North East Ohio

<http://www.futurefundneo.org/en/~media/Files/Research/2007%20Dashboard%20of%20Economic%20Indicators.as>

# Index of Growth and Equity 1980-2010



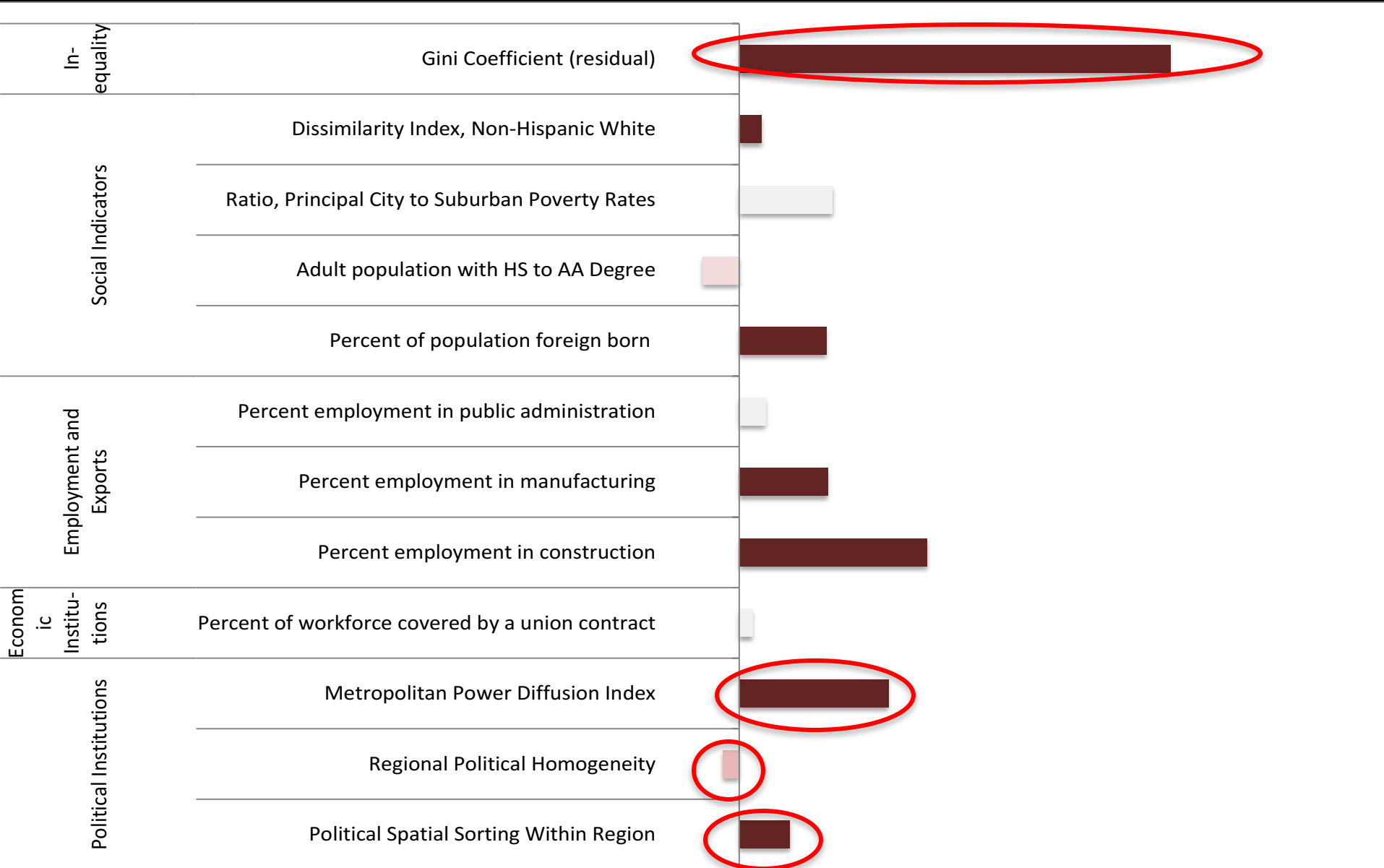


# Some Just Growth Factors



- ❖ Diversified economy
  - State Capital
  - Public sector employment
- ❖ Education:
  - Less high school drop-outs
  - More AA & Tech certificates
- ❖ Minority Middle Class

# Likelihood of Ending Growth Spell, 1990-2011



# Biggest City In the World!

*by enlarging the city to 826.5 square miles,  
consolidation makes Jacksonville No. 1 in area*

By JIM WARD  
Jacksonville Post-Online

and ending up with a city measuring 661 square miles.

Neither Los Angeles nor Oklahoma City, however, last claim on the world title, says the editorial.

Population, in its sure, does not enter into the question of Jacksonville being the largest city in world, but it will mean something in the state.

With a population of a little more than 100,000 last sum-

In 1950 — in those quiet years when Jacksonville was just beginning to realize she had a story to tell, too — before the Communist regime gained control of the mainland, Peking had an area of some 300 square miles, including the ancient imperial capital city, which has an area of 25 square miles.

Three years after the defeat of the Nationalists, the Communist government enlarged

No other large city in the world — including such giants as Shanghai, Tokyo, London, New York City, Moscow, Berlin or Paris — has a larger land area than Jacksonville.

Again, it should be noted, this does not take into account the population of these cities; for they are the most densely populated areas in the world.

In terms of these cities themselves, they have populations in the millions; and, in terms of the metropolitan areas which surround them, these total populations are counted in terms of tens of millions of people.

## Right Largest

In terms of square miles, the next seven largest cities in the world after Jacksonville are: Shanghai, Tokyo, New York, London, Berlin, Paris, and Moscow.

This order, however, is still dependent on whether the metropolitan area of the city is included or simply the area of the city proper.

Shanghai has an area of 776 square miles as an administrative district similar to the

London is 741 square miles of land.

The population of the metropolitan area is 11,821,000 but only 4,800,000 people live in the City of London itself. The estimated population of the County of London is 3,175,000 approximately.

like them. The population of the Moscow district, however, is estimated at more than 18 million.

The metropolitan city of Paris, which began on the Ile de la Cité in the Seine River, is essentially located in the Seine Department, which has



*Jacksonville-as far as eye can see; this aerial shows the heart of the New City with its*

## the cover story

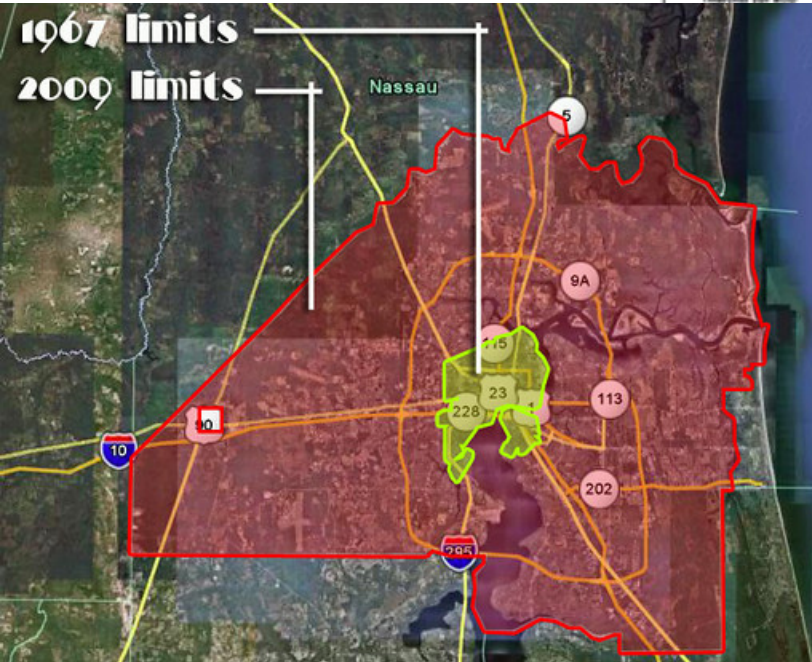
Jacksonville's unique claim to fame under consolidation is explored by Times - Union Staff Writer Jim Ward. Cover photo by Roger Mullis.



Ward

mer, Jacksonville has a new total today — more than half a million.

The metropolitan district of Peking to include all of the land south of the Great Wall of



JCCI

*Citizens Building a Better Community*  
JACKSONVILLE COMMUNITY COUNCIL INC.





## Serving the Kansas City Metropolitan Area

119 Cities | 9 Counties | 2 States | 1 Region

COMMUNITY

DATA & ECONOMY

EMERGENCY SERVICES/9-1-1

ENVIRONMENT

GOVERNMENT

REGIONAL PLANNING

TRANSPORTATION

Aging and Adult Services

Early Learning

Head Start

First Suburbs Coalition

Homelessness

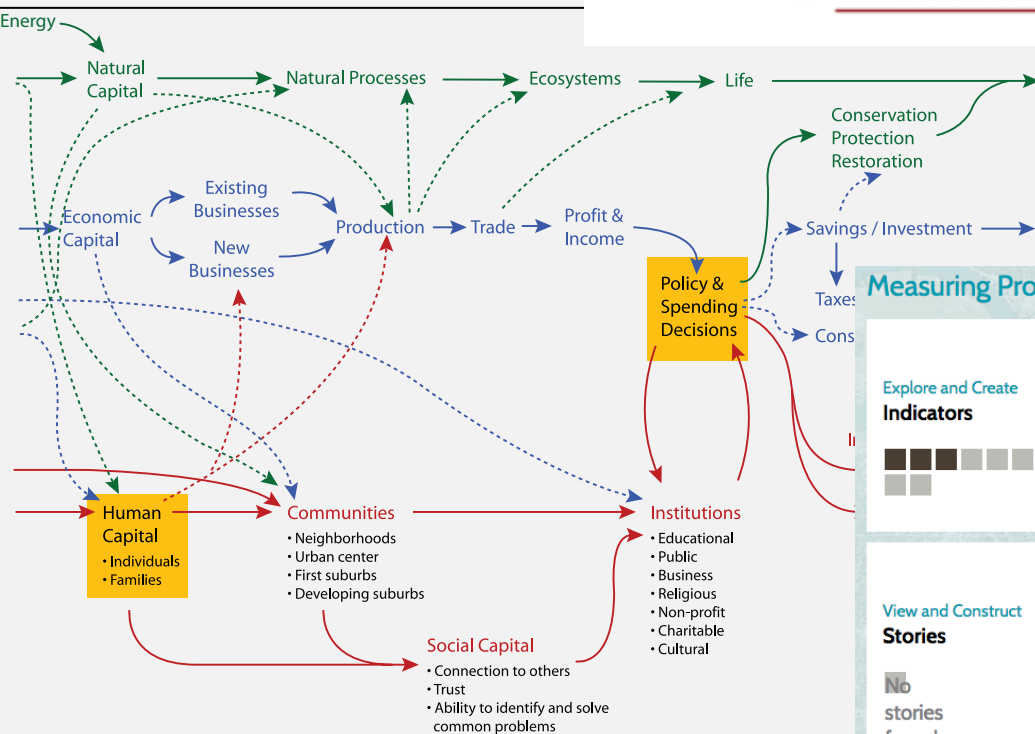
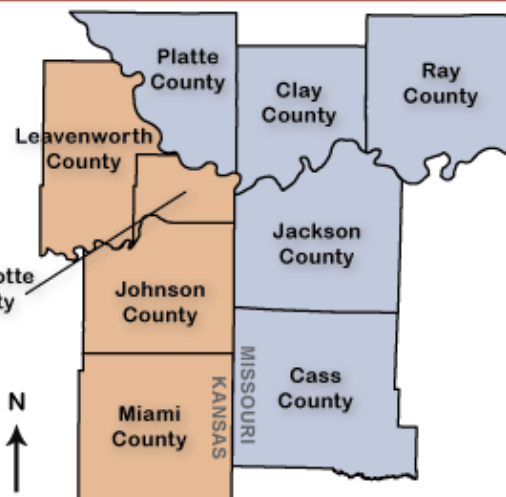
Communities for All Ages

Public Health

Regional Health Care Access

## METRO OUTLOOK *LIVE*

## METRO DATALINE



### Measuring Progress

#### Explore and Create Indicators

#### View and Construct Stories

No stories found.

### Indicators Stories Knowledge Center

Population	Economy	Health
How many people live in my community, and what are their characteristics? Explore population by age, sex, race, and income.	How is the overall KC economy doing? Where are the jobs? Explore employment, unemployment, household income and gross metropolitan product.	How healthy are the people in KC? Compare county-level indicators across large US metros as well localized data on disability and health insurance.
<a href="#">SEARCH POPULATION</a>	<a href="#">SEARCH ECONOMY</a>	<a href="#">SEARCH HEALTH</a>
<b>Educated People, Healthy Communities</b>	<b>Growth of the KC Metro, 1940-2010</b>	<b>Smaller housing units and jobs/housing balance</b>
The relationship between education, wealth and health	Expansion creates opportunities and challenges	Rising demand for smaller housing units may encourage more housing choices near workplaces
<a href="#">Introduction</a>	<a href="#">Introduction</a>	<a href="#">Demand for smaller housing units is growing</a>
<a href="#">Educational Attainment, bachelor's degree or higher, 2012</a>	<a href="#">Transportation Improvement Program</a>	<a href="#">Multi-Family housing permits, 2002-12</a>
<a href="#">Why education matters</a>	<a href="#">Transportation investment influences the region's physical development pattern</a>	<a href="#">Residential housing type, percent</a>
<a href="#">VIEW STORY</a>	<a href="#">VIEW STORY</a>	<a href="#">VIEW STORY</a>

THE CHURCH OF  
**JESUS CHRIST**  
OF LATTER-DAY SAINTS



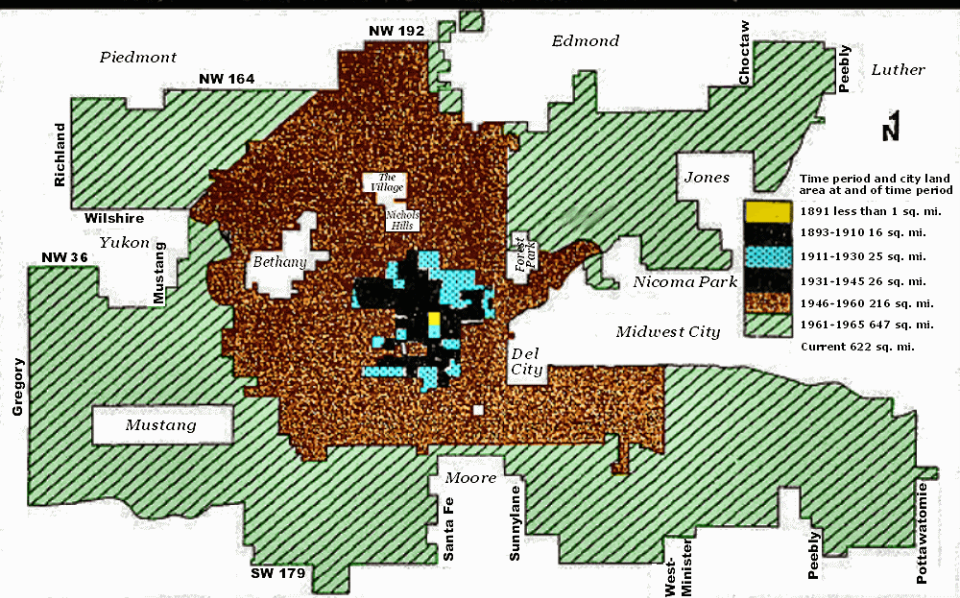
**THE UTAH  
COMPACT**

A DECLARATION OF FIVE PRINCIPLES TO  
GUIDE UTAH'S IMMIGRATION DISCUSSION





# Oklahoma City Growth 1891-1989



WHEN COMPLETE, THE PROGRAM WILL HAVE BUILT OR RENOVATED  
73 SCHOOL SITES THROUGHOUT THE OKLAHOMA CITY  
PUBLIC SCHOOLS DISTRICT.

## MAPS for Kids.







WIKIPEDIA  
The Free Encyclopedia

Article

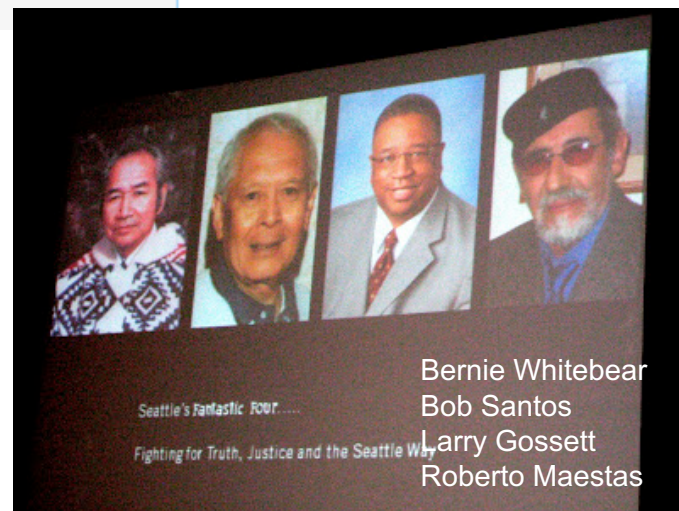
Talk

## Seattle process

From Wikipedia, the free encyclopedia



King County Equity and Social Justice



BUSINESS  
IN SEATTLE

LIVING IN  
SEATTLE

VISITING  
SEATTLE

CITY  
SERVICES

CITY  
DEPARTM

RACE AND SOCIAL JUSTICE INITIATIVE (RSJI)

\$15 MINIMUM WAGE



# What does it all mean?

## ❖ Epistemic communities

- Shared knowledge and agendas
- Shared notions of validity
- Coordinated action
- Typically policy-focused & expert driven



## ❖ Diverse & dynamic epistemic communities

- Broader inclusion
- Common regional destiny
- Repeated interactions
- Ability to regroup in response to shocks
- Action-oriented, not just policy
- Build on regional cultures & constitutive of those cultures

❖ New 3 Rs:

- **Roots, Relationships, Reason**

# Impacts on growth and equity

## ❖ Growth

- Innovation
- New and diverse economic opportunities
- Collective/coordinated response

## ❖ Inclusion

- Connect geographies and populations
- Expand structures of opportunity
- Redistributive policies

# Structural inequalities

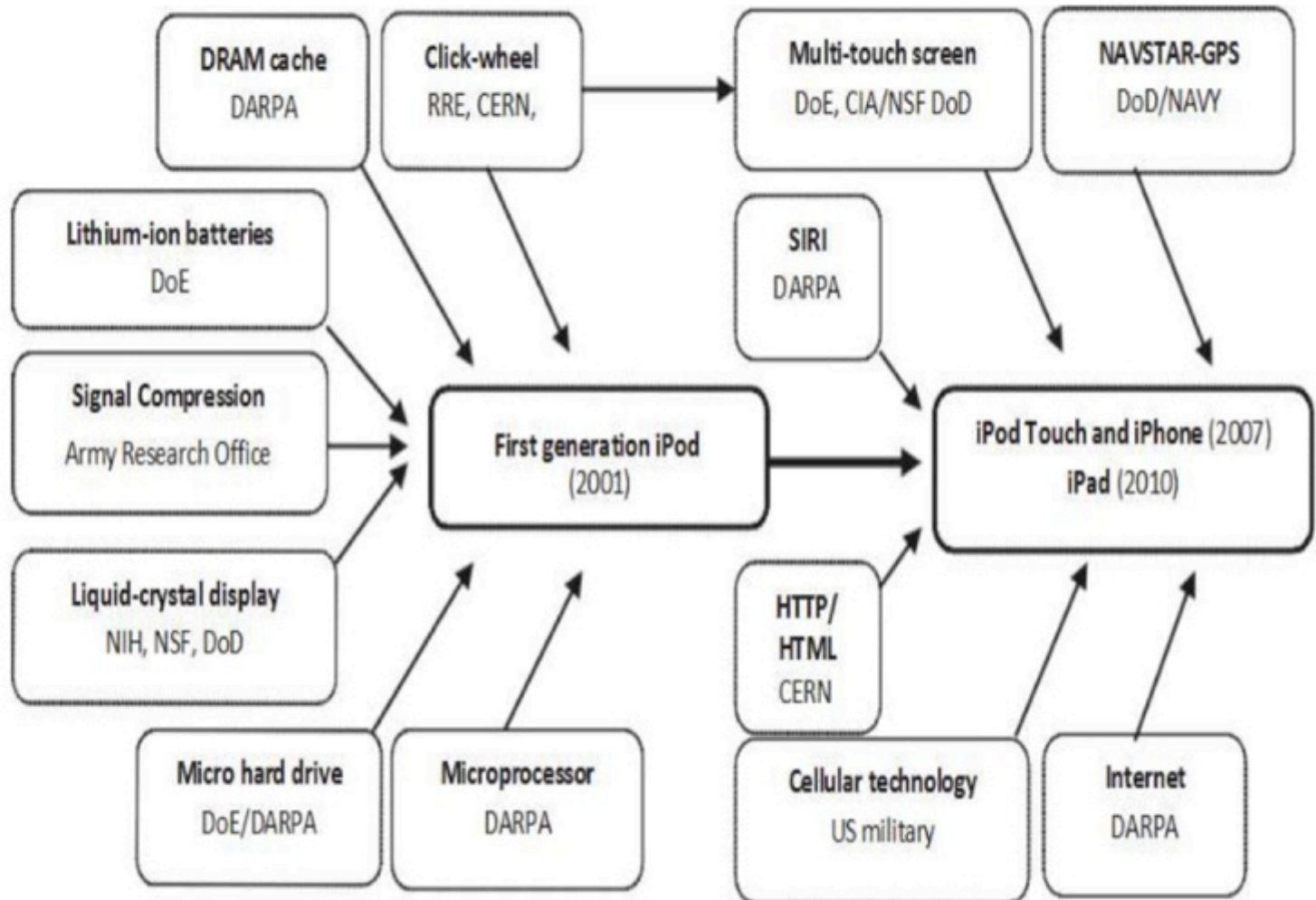
Company	Year Founded	Employees	Revenue per employee
McDonald's	1940	400,000	\$60,000
Walmart	1962	2,100,000	\$200,000
Intel	1968	100,000	\$540,000
Microsoft	1975	90,000	\$767,000
Google	1998	32,000	\$1,170,000
Facebook	2004	3,000	\$1,423,000

Source: Pistono, Federico (2015) *Basic Income and other ways to fix capitalism*

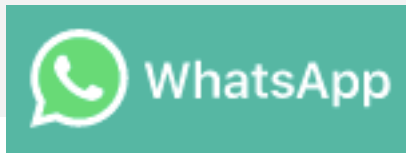
- ❖ 1 out of 7 private sector jobs are in the food system
- ❖ 8 out of 10 lowest paying occupations are in the food system



# What makes the iPhone so 'smart'?



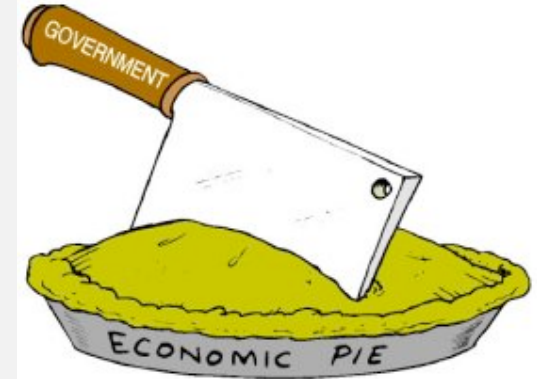
# What makes Google so valuable?

The Google logo, featuring the word "Google" in its signature multi-colored font.The Amazon logo, consisting of the word "amazon" in a black sans-serif font with a curved orange arrow underneath.The Facebook logo, featuring the word "facebook" in white lowercase letters inside a blue rounded rectangle.The eBay logo, featuring the word "eBay" in a multi-colored, stylized font.The Upwork logo, featuring the word "upwork" in a green and grey sans-serif font, with "formerly oDesk" in a smaller grey font below it.The Instagram logo, featuring the word "Instagram" in a black, handwritten-style script font.

Platforms, networks and social data!

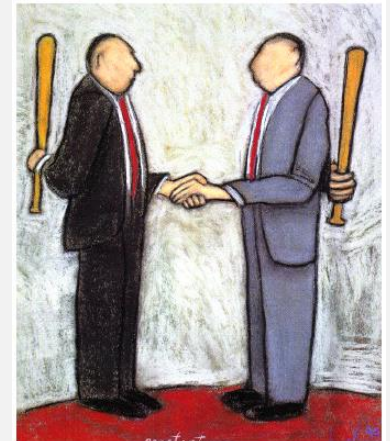
# Solutions to equity challenges?

- ❖ It's the (eco)system not the pie
- ❖ Expand social wages
- ❖ Build learning networks not training programs
- ❖ Incubate diverse & dynamics epistemic communities



# FINAL THOUGHT

- ❖ “Talk is not actually cheap; it requires effort, and it can help change hearts and minds in ways that encourage collaboration rather than zero-sum competition.”





# EQUITY, GROWTH, and COMMUNITY

What the Nation Can Learn  
From America's Metro Areas



CHRIS BENNER | MANUEL PASTOR

*Thank you!!*

*<http://chrisbenner.net>*



*<http://GrowingTogetherMetro.org>*

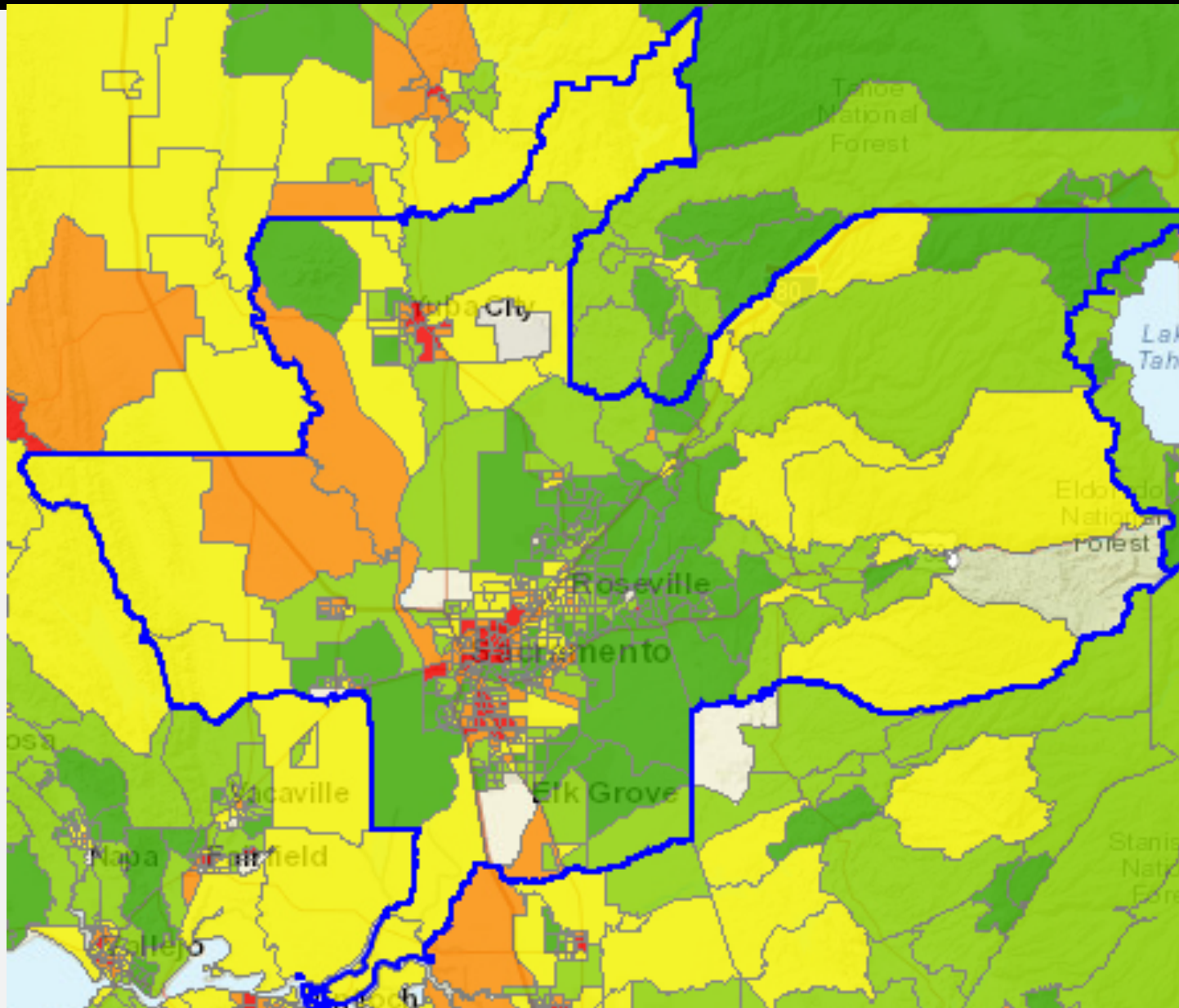


UNIVERSITY OF CALIFORNIA  
**SANTA CRUZ**

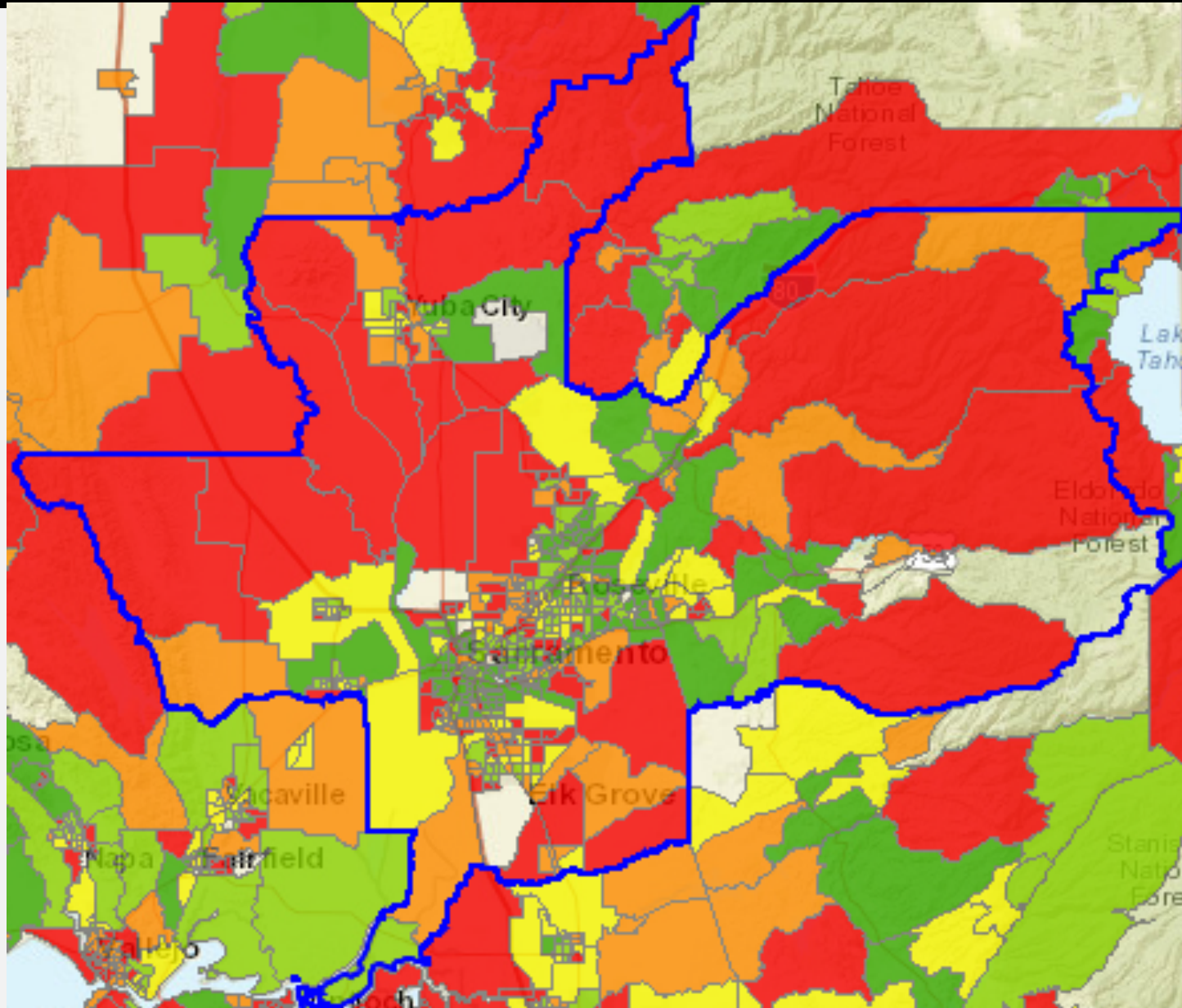
**everett** program  
DIGITAL TOOLS FOR SOCIAL INNOVATION



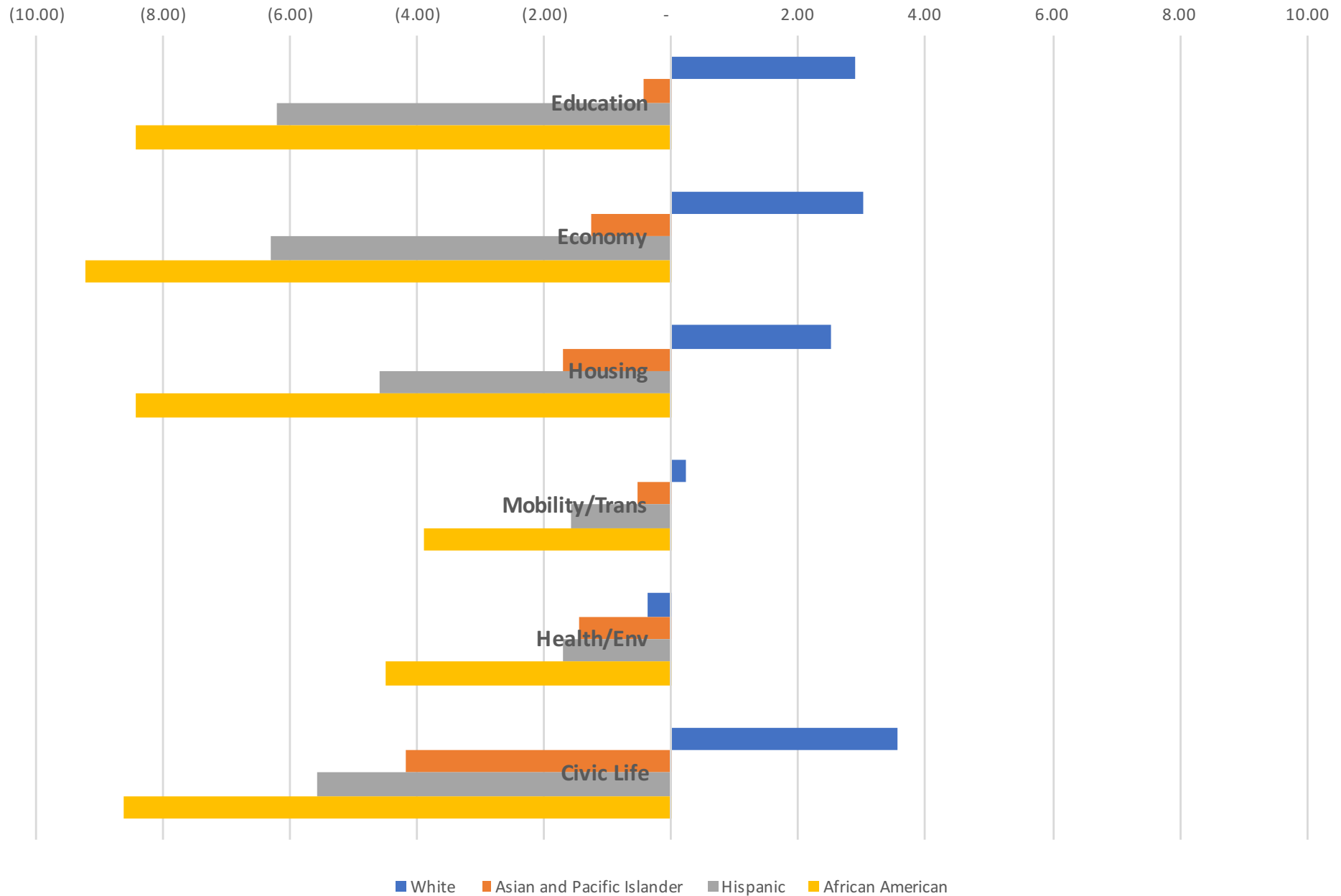
# Regional Opportunity Index--PEOPLE



# Regional Opportunity Index--PLACE



# ROI-People



# ROI-Place

