

Mayors' Commission on Climate Change

Meeting #6 | December 2, 2019

City of
SACRAMENTO



WELCOME

Anne Stausboll | Commission Chair

PROGRESS REPORT

Kate Meis | Local Government Commission

CITY OUTREACH & ENGAGEMENT
& EQUITY ROUNDTABLE MEETINGS

Community Health
& Resiliency TAC

Final Carbon Zero Recommendations

JANUARY 2020

Finance TAC

Financing Options for Implementation

FEBRUARY 2020

Business
Roundtables

Input from Business Stakeholders

FEBRUARY 2020

Integration

Final Set of Strategies Across TACs

MARCH 2020

Review

Final Recommendations Report

MAY 2020

sacramento | 2040

CITY OF SACRAMENTO GENERAL PLAN UPDATE AND CLIMATE ACTION PLAN

Remi Mendoza
City of Sacramento

City of West Sacramento **Climate & Resiliency Action Plan**

David Tilley
City of West Sacramento



Equity in the Context of Climate Change



Commission's Definition of Equity

Equity means making the decisions to ensure the fair and proportional distribution of impacts, opportunities, resources, and costs.

Equity also demands inclusivity, the practice of including relevant stakeholders and communities, particularly marginalized communities and groups that have been historically left out, in the policymaking and governance process, in order to ensure fair and equitable outcomes.



Sustainable Communities Initiative

Collective Impact Through Collaboration



**Sustainable
Communities**

Strengthening our
neighborhoods. Together.



why we're building sustainable communities?

We're community-owned, not-for-profit

smud.org/Community





"Everyone has
the right to an
environment that
is not harmful
to their health
or well-being."

Constitution of the Republic of South Africa

environmentalillnessnetwork.tumblr.com

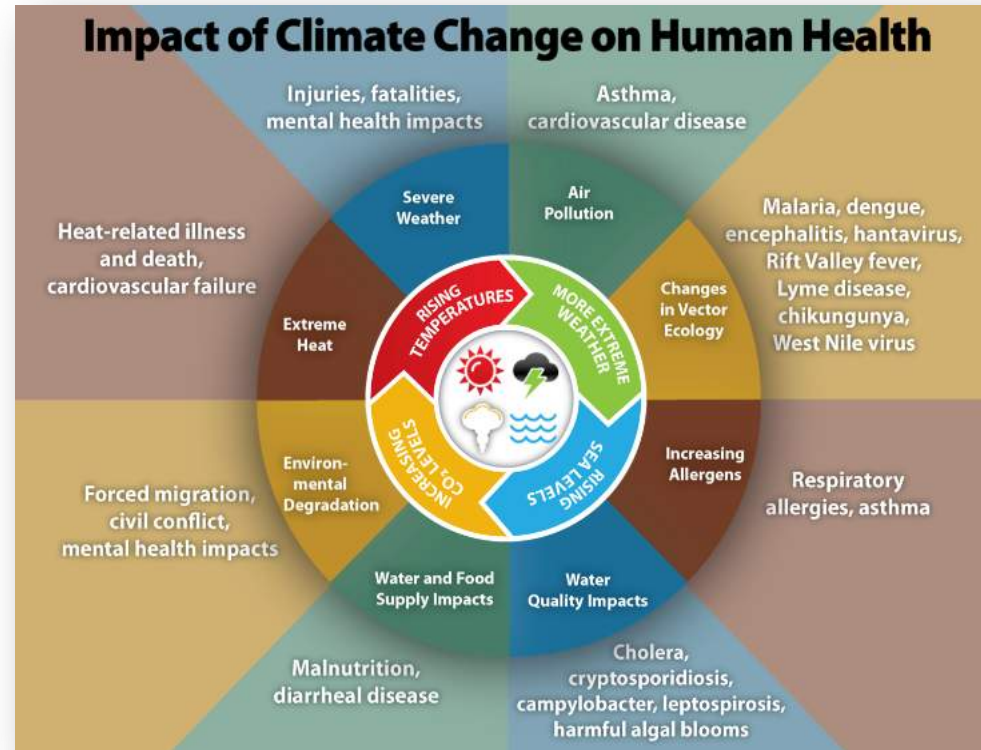
Climate Change and Health Profile Report
Sacramento County



February 2017

“Climate change challenges our commitment to achieve equity in health and wellbeing in California, as it deepens the need to take actions that reduce vulnerabilities and increase resilience to climate change in our communities.”

Impact of Climate Change on Human Health



Why Equity is an issue related to Sacramento's Sustainability



HISTORY OF
DISCRIMINATORY LAND
USE POLICIES



HAZARDOUS MATERIALS
HISTORY/GROUNDWATER



LIMITED POLITICAL
POWER & VOICE



LACK OF ECONOMIC
INVESTMENT/VACANCIES



LACK OF AUTHENTIC
COMMUNITY
ENGAGEMENT



URBAN & RURAL
DISENFRANCHISEMENT



UNEVEN IMPACT ON EJ
COMMUNITIES



Significant disparities are growing across economic indicators between the haves and have-nots.

“...Sacramento Region’s leaders must take on the difficult but important civic work to assure sustained growth and prosperity.”

~ *Brookings: Charting a Course to the Sacramento Region’s Future Economic Prosperity*



Sustainable Communities Mission

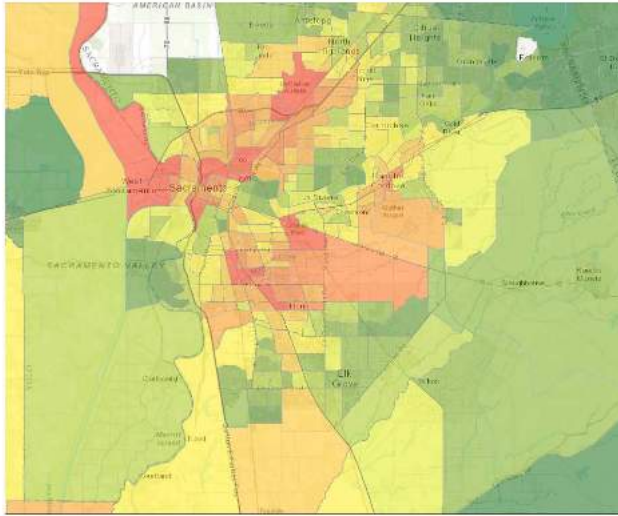
Enhancing the quality of life for all of our customers and enhancing the vitality of all of our communities.

Sustainable Communities

Strengthening our neighborhoods. Together.



Does the Current Environmental Justice Criteria Meet Our Region's Needs?



CalEPA Screen 2.0 Results








Environmental Indicators

- 12 Pollution Burden Indicators
 - Air Quality-(Ozone, PM 2.5)
 - Diesel PM
 - Drinking water contaminants
 - Pesticide Use
 - Toxic Releases
 - Traffic Density
 - Clean Up Sites
 - Haz Wastes Facilities
 - Solid Waste Facilities
 - Impaired Water Bodies

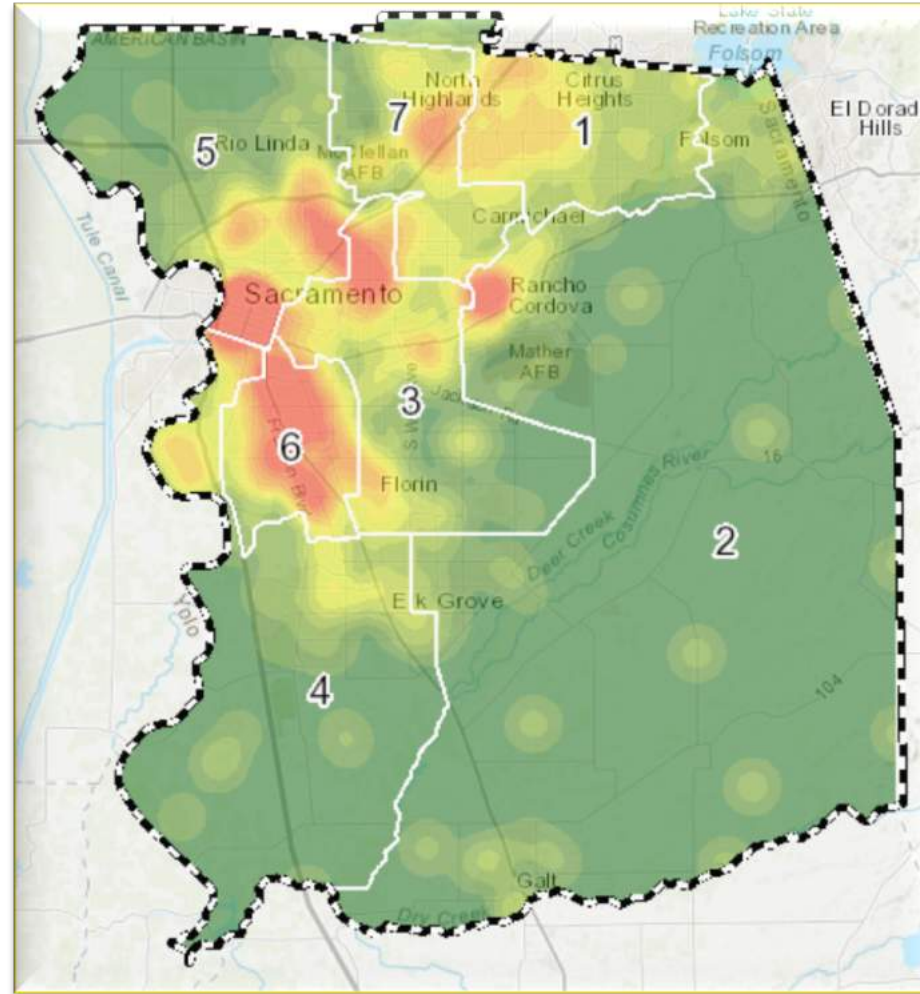
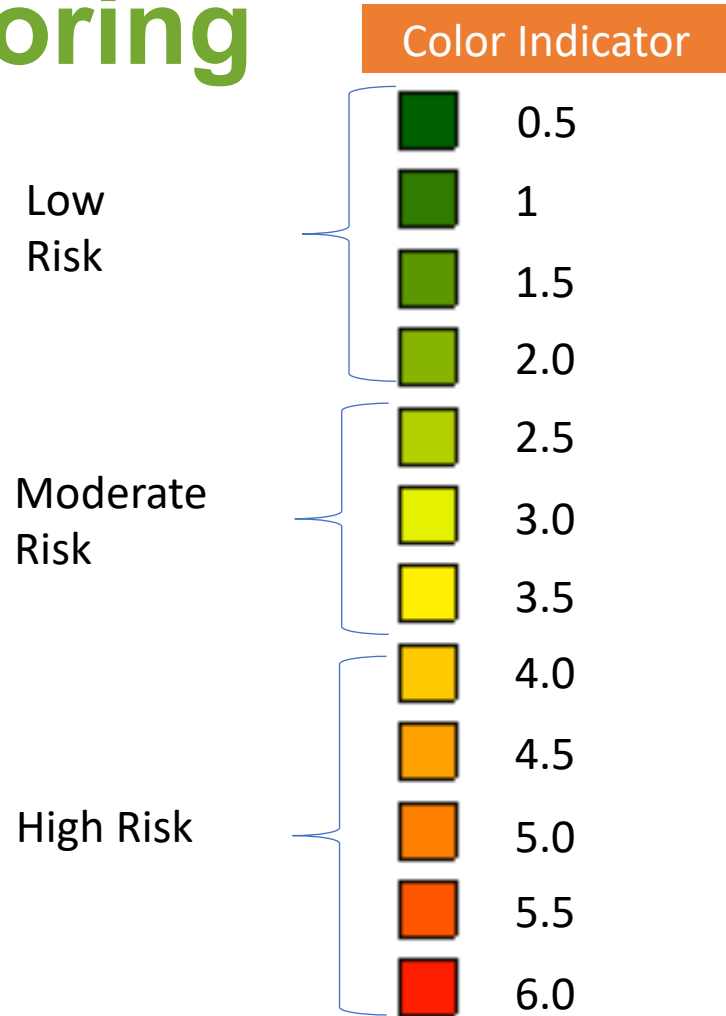
Population Indicators

- 7 Population Characteristic Indicators
 - Asthma/Cardiovascular Disease
 - Low Birth Weight Infants
 - Educational Attainment
 - Housing Burden
 - Linguistic Isolation
 - Poverty
 - Unemployment

Definitions Related to Sustainable Communities

	Disadvantaged Communities	Determinants of Equity		Health Equity
Environmental Justice		Low-Income Area	Climate Change Impact	
Social Justice	Vulnerable Communities & Vulnerable Places		Air Quality	Health & Mental Health Disparities

Draft SMUD Sustainable Communities Risk Heat Map Scoring



Sustainable
Communities



Sustainable Communities Initiative Methodology



**SMUD Purpose
Alignment**



**Partnerships:
Conveners
Aligners
Implementer**



**Targeted/Need
Based
Implementation
and Strategic
Metrics**



**Community
Impact - Triple
Bottom Line**

Sustainable Communities

Phase 1:

Pilot Partnerships

- Responsible Investment for a Stronger Economy (RISE)
- City of Refuge
- Foster Youth Education Fund
- Franklin Business Improvement District
- Mutual Housing
- Pioneer Church
- Roberts Family Development Center
- Serve Sacramento
- Salvation Army
- University of Pacific
- Volunteers of America
- Single Mom Empowerment
- UC Davis
- Wells Fargo

- Sacramento State
- SMAQMD
- Valley Vision
- BERC
- Promise Zone Coalition
- Urban Land Institute
- Elk Grove Chamber
- Citrus Heights
- Carmichael Chamber
- Greater Sacramento Economic Council
- City of Sacramento
- Folsom Chamber
- Rancho Cordova Chamber
- Safe Credit Union
- Simmons Center
- California Aerospace Museum
- Sacramento Kings

- Sacramento Metro Chamber
- Slavic Chamber
- Black Chamber
- Sacramento Asian Pacific Chamber
- Sacramento Hispanic Chamber
- Greater Sacramento Vietnamese Chamber
- Rainbow Chamber
- Nehemiah Emerging Leaders Program
- Red Cross
- Greater Sacramento Urban League
- Sierra Nevada Journeys
- RISE Program
- SAFE Credit Union
- SACOG
- Green Tech
- Blue Shield

Conveners
Aligners
Implementers

Targeted &
Need Based
Impact

Triple Bottom
Line Outcomes



Near Term Accomplishments

What We've Done

- \$17.8 Million of Aligned Partnership Dollars Allocated to Sustainable Communities Effort
- Sustainable Communities Heat Map Development
- Service Area Priorities Metrics Development
- Agency Coalition Building
- Corporate Partnership Recruitment
- Improved Utilization of SMUD Programs through Partnership
- Targeted Contribution Methodology Towards Under Resourced Communities

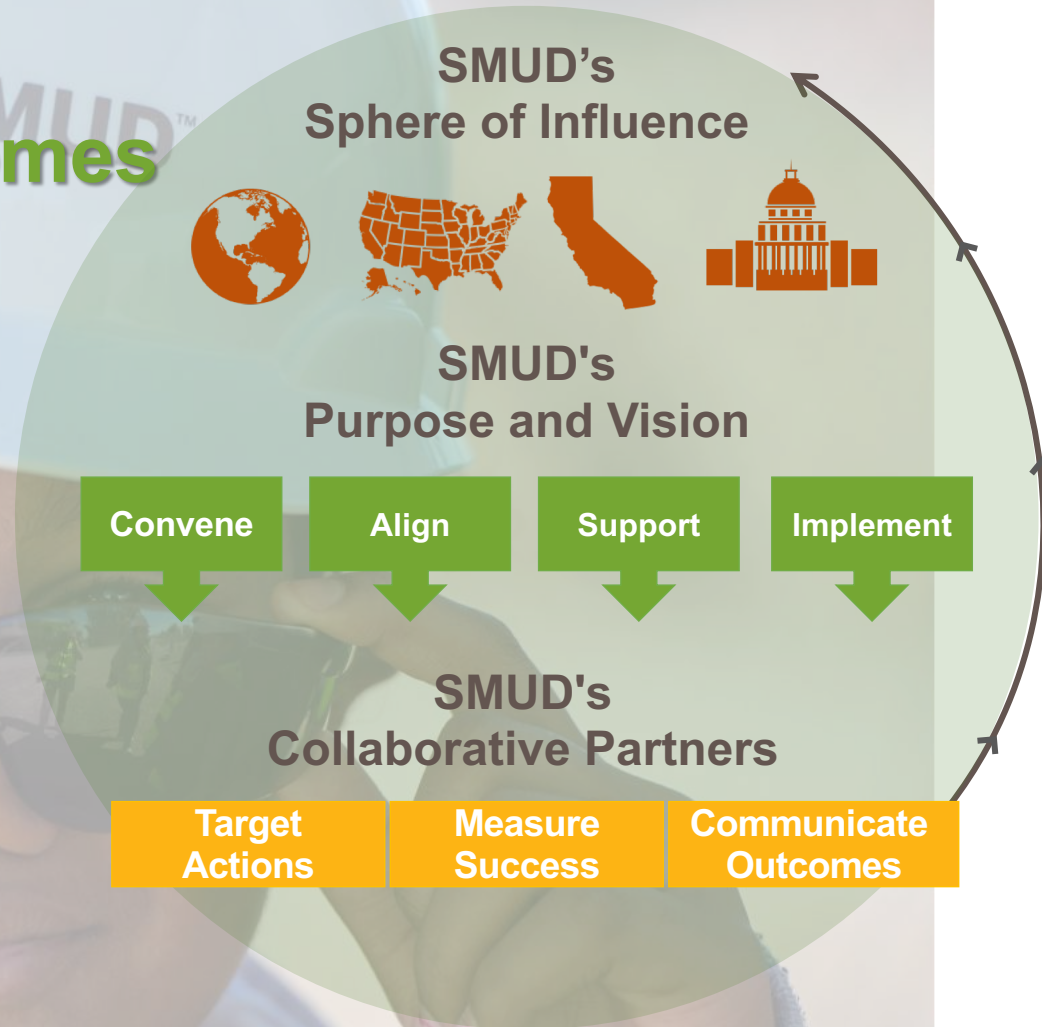
Key Partnership Wins

- Promise Zone Collaborative-
 - Energy Careers Pathways w/ Urban League
- Roberts Family Development Center- Building Remodel
- Mutual Housing- 160 Room Upgrades and EV Car Share
- RISE Program- SCI Reinvestment
- City of Refuge Partnership
- University of Pacific Reach for the Stars Academy
- ULI Health and Equity Task Force



Key Sustainable Community Outcomes

1. Contribute to Regional prosperity and equity by helping where the need is greatest.
2. Develop a Sustainable Communities Strategy Framework with measurable outcomes
3. Leverage collaborative partnerships for greater sustainable impact.





Thank You

The background is an aerial photograph of a landscape with a river and forested areas. A dark, semi-transparent rectangle is centered over the image. Inside this rectangle, at the top, is a smaller teal-colored square. The title text is centered within the dark rectangle.

Climate Change & Disability

Sacramento | Dec. 2, 2019
Alex Ghenis | alex@wid.org

Two Models of Disability



Medical Model of Disability: regressive & harmful

The body/mind is “broken” compared to the able-bodied norm

Bodies and health should be fixed medically, close to the AB norm

Infrastructure designed for ABs is fine; PWDs’ extra needs are unusual



Social Model of Disability: inclusive & transformative

Variance in bodies, minds etc. is normal & natural

Inaccessible infrastructure & systems are “disabling,” creating inequities

Infrastructure & systems need change for equity & inclusion



Direct Climate Impacts

- Damaged homes, infrastructure etc. from storms & other extreme weather
 - Heat-related illness and fatalities
- Flooding coastlines & infrastructure
- Crop failure & higher food prices
- Consequences from poor air quality



Secondary Impacts

- Economic slow-downs & instability
 - Government problems
- Healthcare stress: higher costs, more need for services, fewer supplies, etc.
- Disrupted supply chains & goods delivery
- Social unrest, conflict (possibly violent)
 - Mass migration from both direct & secondary impacts

Threatening the Social Model

Infrastructure & systems support the social model, such as:

- Accessible buildings, public spaces, transportation, homes, etc.
- Government supports, from SSI to Medicaid to in-home care
- Stable healthcare systems, including supplies
- Inclusive employment & social activities

Climate Change jeopardizes these systems. For example:

- Broken infrastructure becomes inaccessible
- Evacuation plans may not be fully inclusive
- Stressed governments may cut social services
- Broken production & delivery of supplies
- Power outages hit disability-related needs

Adaptation and Climate Justice



Mitigation vs. Adaptation

Mitigation: the main discussion

- Stop and (hopefully) reverse climate change
- Cut emissions, sequester CO2

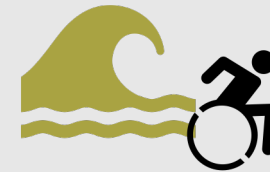
Adaptation: the unmet need

- Prepare for C.C. in advance
- Use the “precautionary principle”



Mitigation & Climate Justice

- Slowing climate change reduces climate impacts for everyone
- People with privilege may still have resources to adapt
- Leftover warming is still unequal
- May lay blame on PWDs & others for existing needs & actions



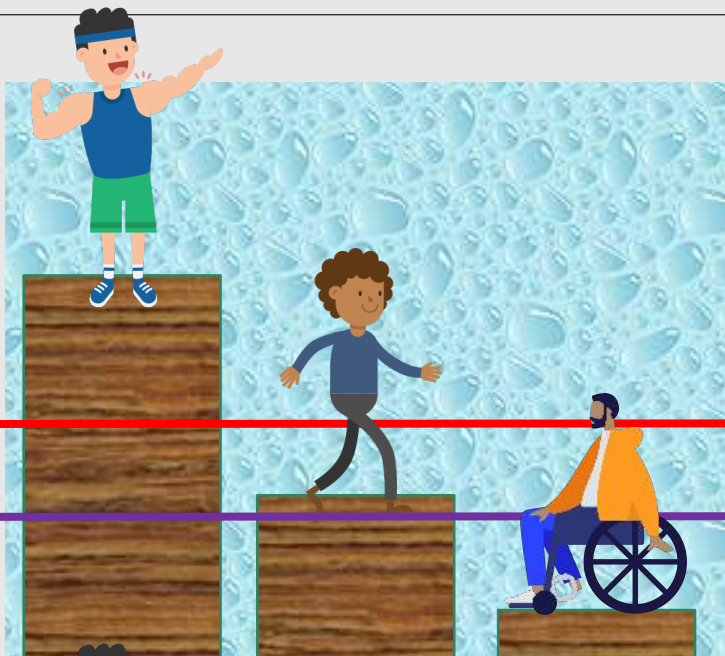
Adaptation & Climate Justice

- Recognizes inevitable future C.C.
- Can focus on those most vulnerable to climate impacts
- Allows for “tailored” actions
- Resilient infrastructure is new; can use universal access design/framework
- Not mutually exclusive! Do both

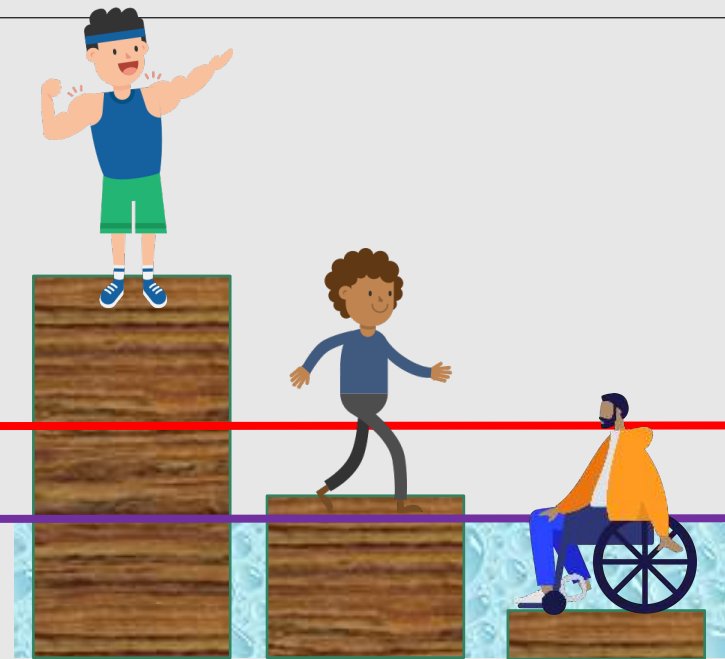
No Action

Red = Current

Purple =
350ppm



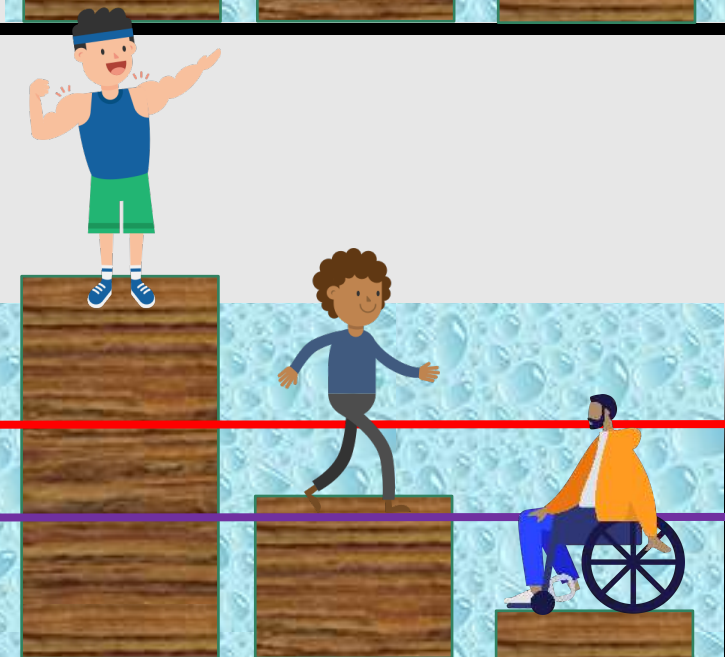
Mitigation (goal)



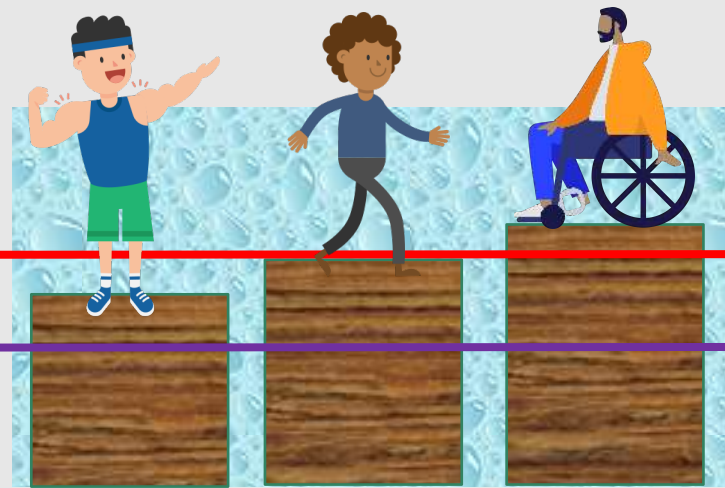
Mitigation (actual)

Red = Current

Purple =
350ppm



Equitable Adaptation



Examples for PWDs in California

Impact	Forest Fires	Extreme Heat	Economic Harm
Harms for PWDs	<ul style="list-style-type: none"> • Difficulty evacuating • Communication barriers • Medical & personal care needs in shelters • Cost of recovery • Dangers from PSPS 	<ul style="list-style-type: none"> • Physical difficulty with extreme heat • Lower-quality housing • Less \$\$ for A/C bills • Limited access to cooling centers 	<ul style="list-style-type: none"> • PWDs have low employment and income - vulnerable • Austerity threatens social services • Cascading impacts
Action	<ul style="list-style-type: none"> • Improve transportation, be responsive in emergencies • Support comms service • Shelter & supports • Manage PSPS well 	<ul style="list-style-type: none"> • Set up & advertise accessible shelters • Financial supports: retrofits & A/C bills • Housing policies 	<ul style="list-style-type: none"> • Design resilient budgets & services • Get public support • Other financial empowerment

A scenic view of a city river, likely the Mississippi River in St. Louis, with a large bridge (the Eads Bridge) spanning the water. The city skyline is visible in the background under a clear blue sky. The foreground shows green trees and a paved walkway.

Q&A

Equity in the Context of Climate Change

EQUITY ROUNDTABLE

Jackie Cole | VG Consulting

Equity Roundtable Priorities



Resources & Infrastructure for Basic Community Needs



Address Tree Canopy Disparity & Food Deserts



Urban Beautification & Neighborhood Revitalization



Workforce Development (particularly for low-income)

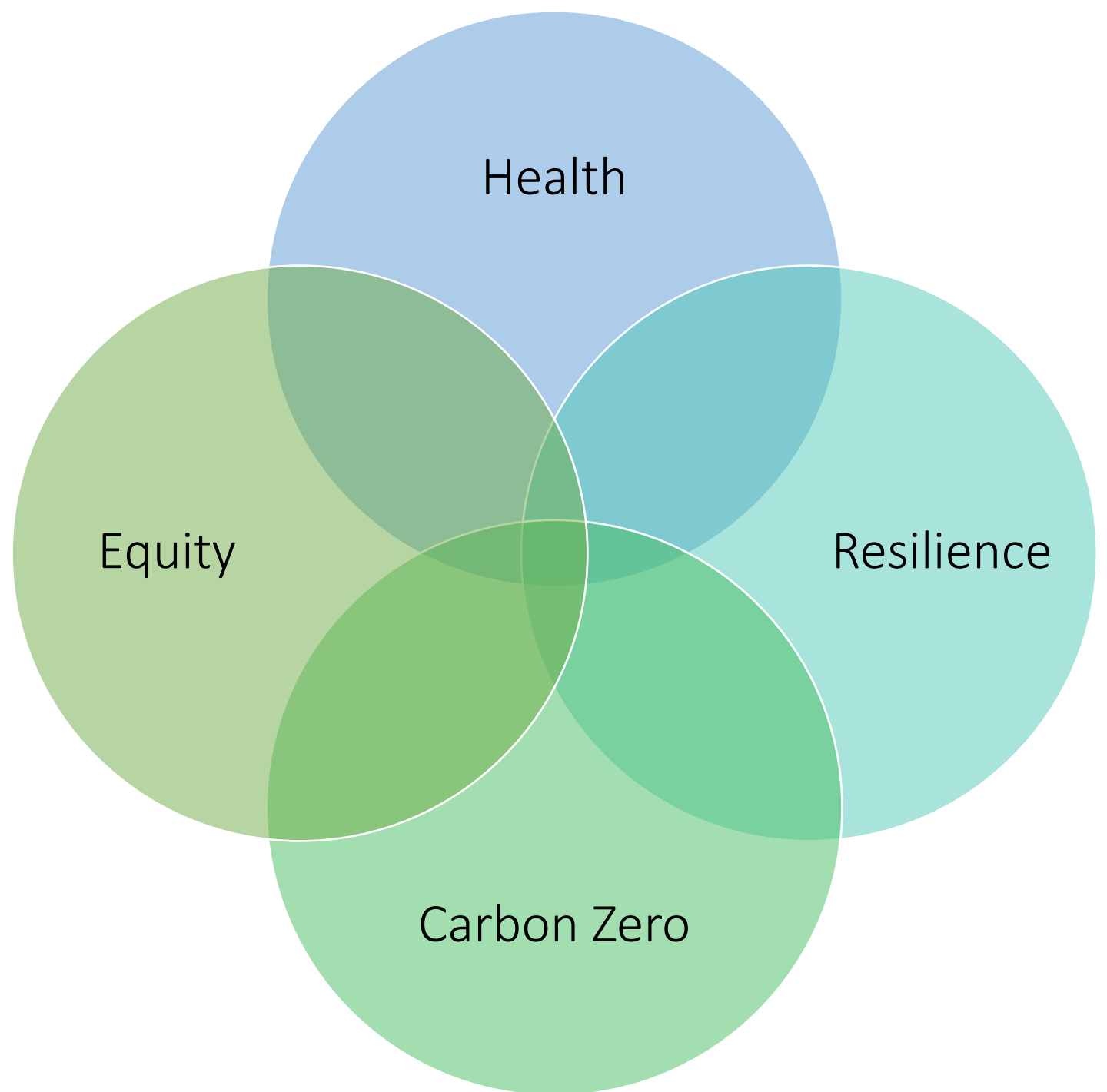


Partner with Existing Community Organizations

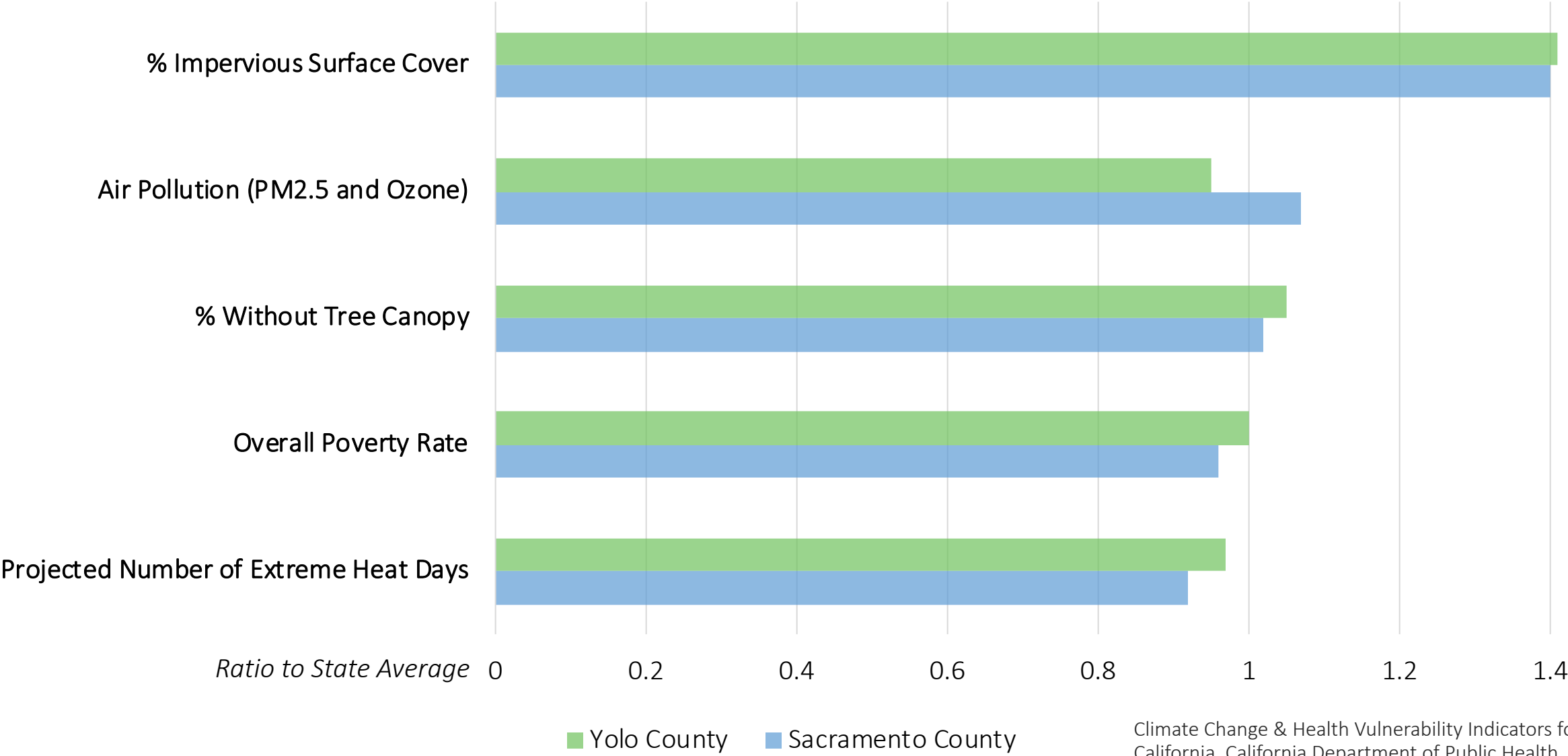
PRELIMINARY RECOMMENDATIONS FOR COMMUNITY HEALTH & RESILIENCY



Identifying
Carbon Zero
Strategies
for
**Community
Health &
Resiliency**

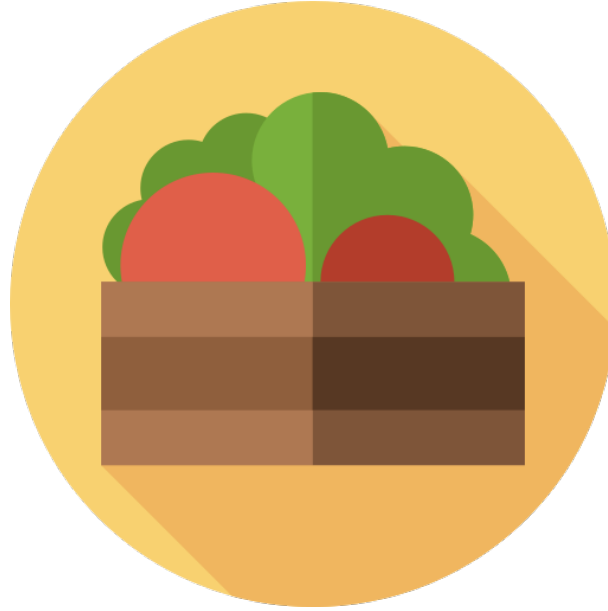


Climate Change & Health Vulnerabilities

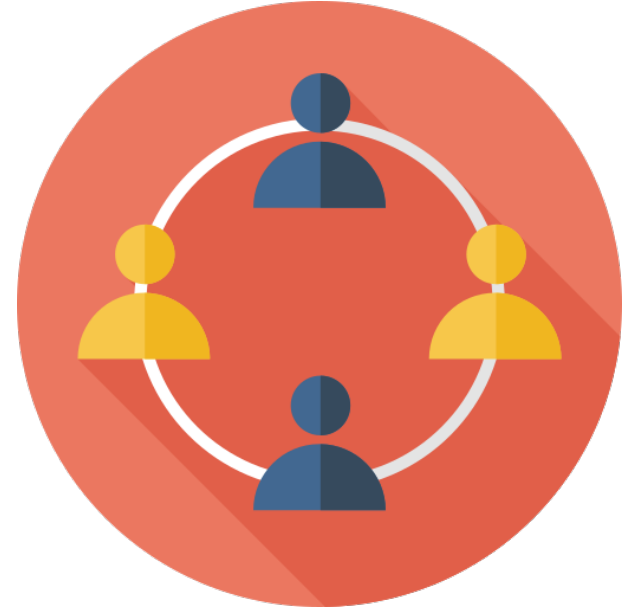




Urban
Greening
& Forestry



Sustainable
Food
Systems



Community
Climate
Resilience



Community Health & Resiliency | Strategy #1

Urban Greening & Forestry

Expand green infrastructure to provide a park or green space within a quarter mile of all residences by 2030 and eliminate tree canopy disparity by ensuring that all neighborhoods have a baseline canopy of 25% by 2030 and 35% by 2045, starting with historically marginalized communities and tree-deficient neighborhoods.



Sacramento Tree Foundation: Neighborwoods Program



West Sacramento Linden Park Revamp



SMUD Customer Service Center: Redwood Grove



Parklet in Philadelphia, PA



Community Health & Resiliency | Strategy #2

Sustainable Food Systems

Reduce GHG emissions from food transport and waste by creating a circular, local, sustainable, regenerative food system and increasing the accessibility and affordability of healthy organic food for all communities by sourcing 25% of food locally by 2030 and 40% by 2045, and reducing 50% of aggregate food waste by 2025 and 75% by 2030.



Soil Born Farms Youth Education Program



West Sacramento Urban Farms



Yisrael Family Farm



Oak Park Farmers Market



Community Health & Resiliency | Strategy #3

Community Climate Resilience

Develop and adopt a plan to reduce exposure to climate change impacts by 2022 to prepare for, respond to, and recover from the greatest threats to public health and safety, including extreme heat, drought, flooding, and wildfires.



Capital Region Urban Heat Island Mitigation Project



Sacramento Community Emergency Response Team



Black Child Legacy Campaign: Community Incubators



Arch Nexus Living Building

Carbon Zero Solutions for Community Health & Resiliency



Urban
Greening &
Forestry



Sustainable
Food
Systems



Community
Climate
Resilience

Clarifying Questions?



PUBLIC COMMENT

Community Health & Resiliency



1-2 minutes max per public comment

COMMISSION DISCUSSION



Urban
Greening &
Forestry



Sustainable
Food
Systems



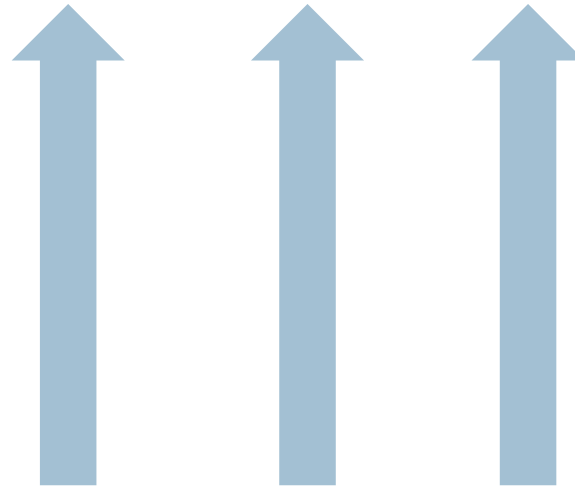
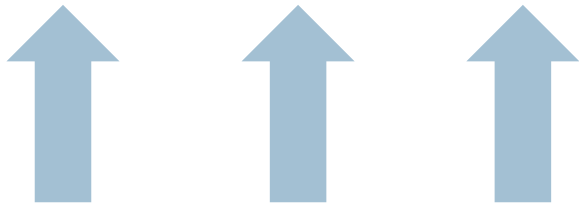
Community
Climate
Resilience

FOUNDATIONAL PRINCIPLES

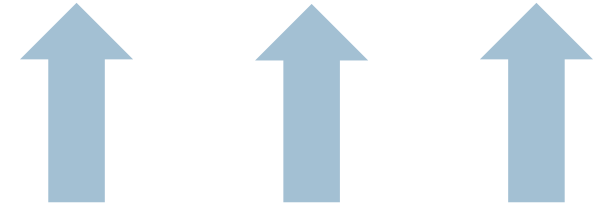
Julia Kim | Local Government Commission

Community Health & Resiliency

Built Environment



Mobility



Foundational Principles



PUBLIC COMMENT **Foundational Principles**

1-2 minutes max per public comment

COMMISSION DISCUSSION

Foundational Principles



PUBLIC COMMENT

1-2 minutes max per public comment



NEXT STEPS & CLOSING REMARKS

Anne Stausboll | Commission Chair

Thank you!

www.lgc.org/climatecommission

City of
SACRAMENTO

