

Riverside County Flood Control and Water Conservation District



Multi-benefit Projects

Edwin Quinonez, PE
Chief of Planning Division



The District

- » \$60 million in ad-valorem property tax revenues
- » \$25 million in capital projects
- » 240 Staff
- » Over 700 miles of storm drains, channels, and levees
- » 61 dams and detention basins



Flood Control



Storm Drains, Channels, Levees, Dams

Riverside Flood and Water Conservation



- **Mission**

We responsibly manage stormwater in service of safe, sustainable and livable communities.

- **Vision**

To be a leader in the field of stormwater management, to achieve extraordinary results for our customers and be known for high quality teams and returned value to our community.

- **Values**

- Integrity – Speak honestly and follow through
- Transparency – Our actions will be visible and understandable
- Trust – We can count on each other and others can count on us
- Teamwork – Shared purpose, shared values, shared goals
- Accountability – We are responsible for results
- Excellence – We deliver outstanding results and exceed expectations

Evolution



Day Creek Channel - North of the 60 Freeway...Old School Uni-tasker

Evolution



Wolf Creek Channel In Temecula – Nice to have even when it's not raining

Multi-Use Eastvale – Harada Park/Basin



Multi-Use

Eastvale – Harada Park/Basin



Multi-Use



Santa Ana River Bike Trail



Conserving stormwater... and other water supplies



Capture stormwater in the winter, excess imported water supplies in summer

Conserving stormwater... and other water supplies

- **Groundwater Enhancement Studies**

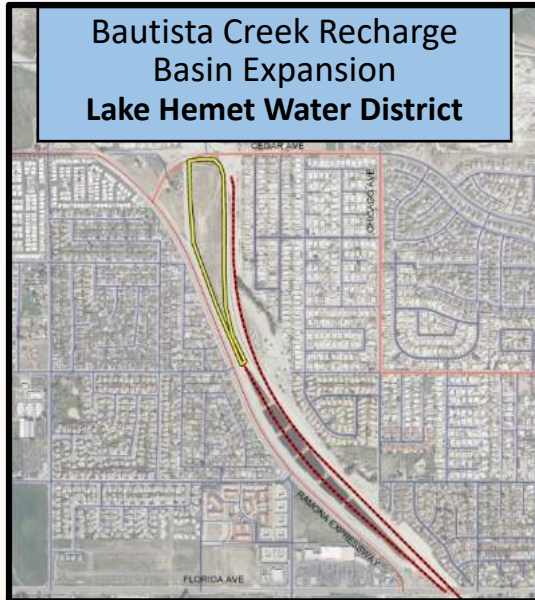
- Temescal Groundwater Master Plan (Corona/EVMWD)
 - Coldwater Creek Groundwater Master Plan (Corona)
 - Arlington Groundwater Desalter Expansion (WMWD)

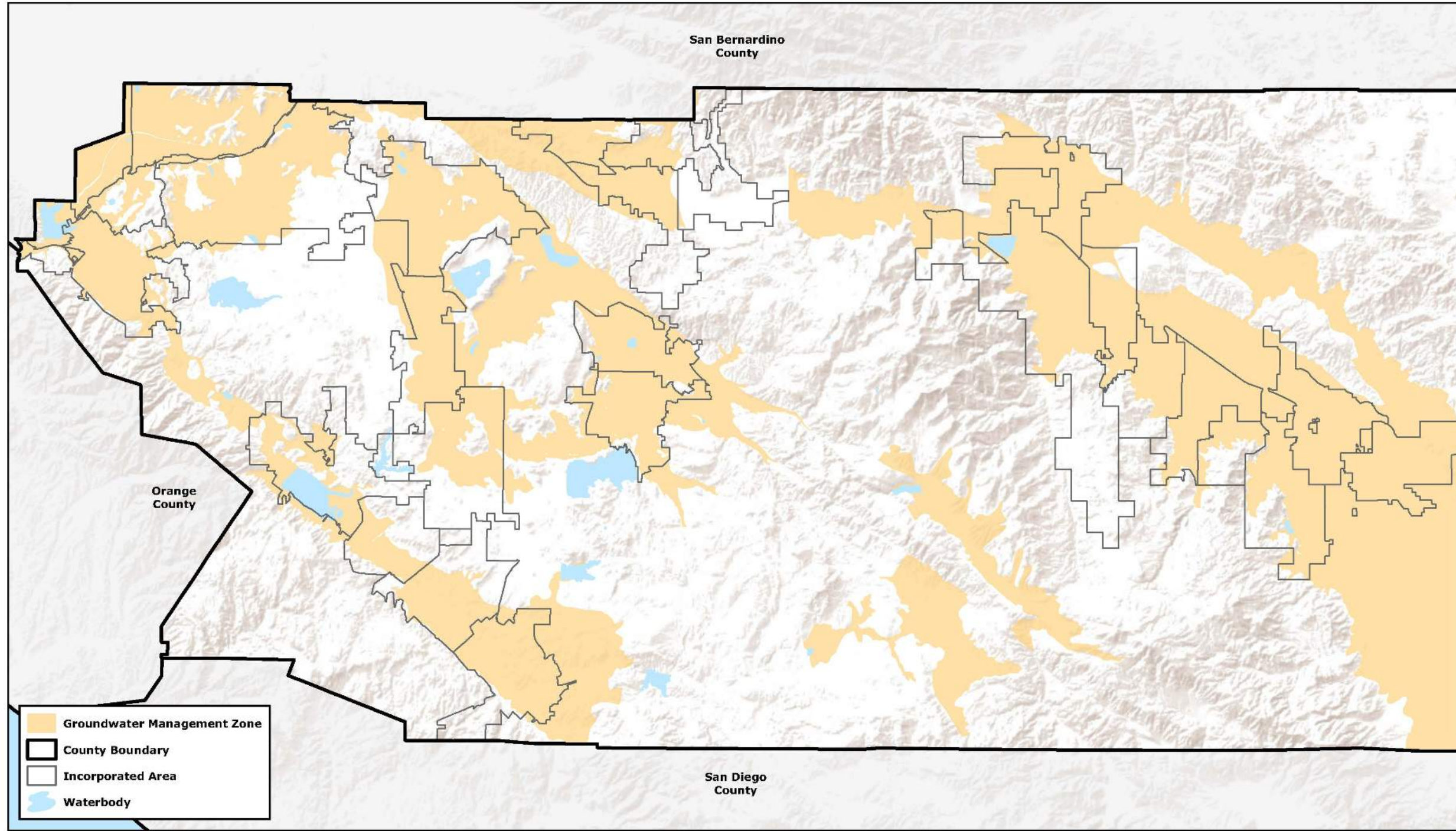
- **Enhanced Flood Control Master Drainage Plans**

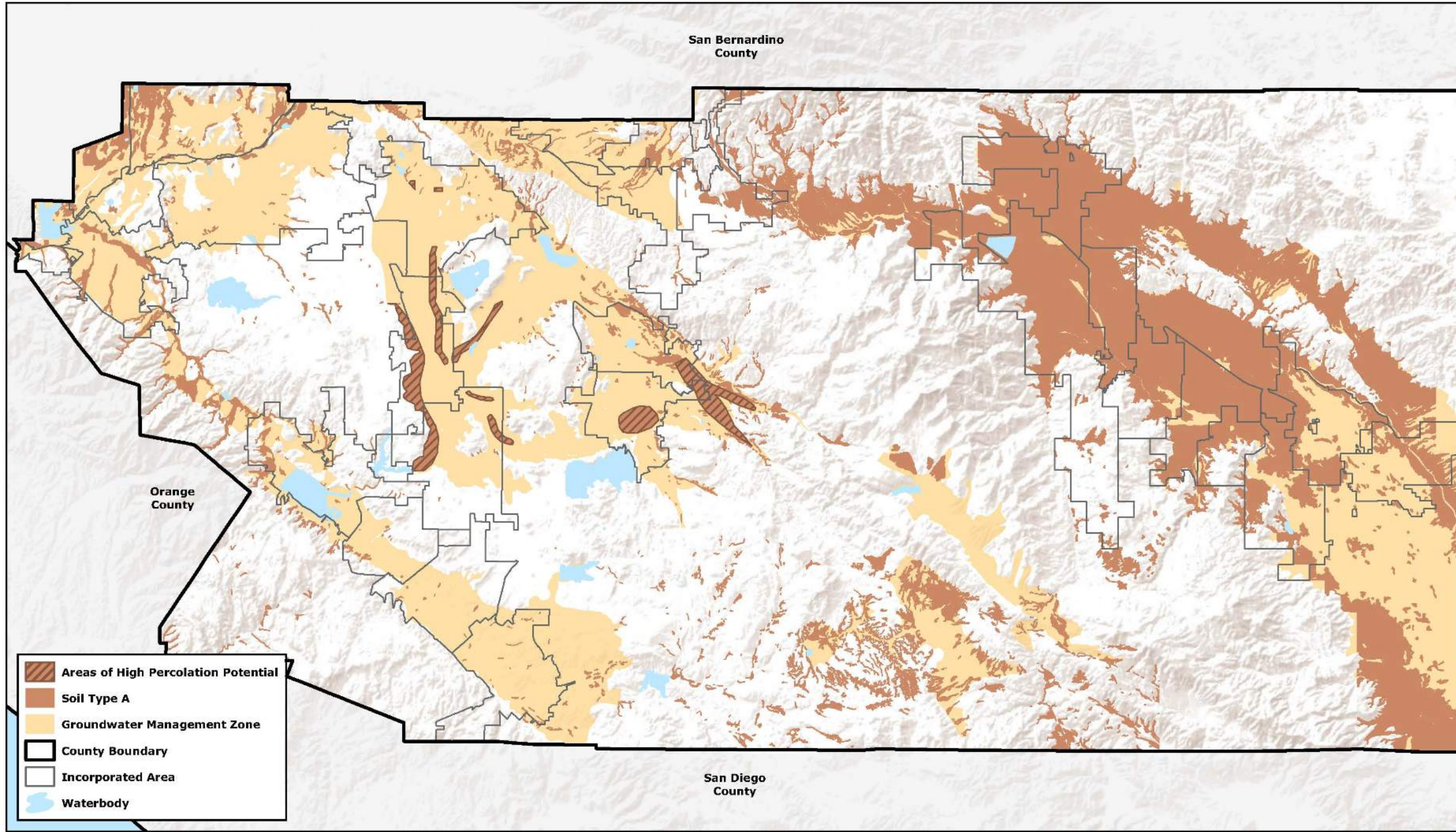
- West Desert Hot Springs (MSWD)
 - Moreno
 - Lakeland Village

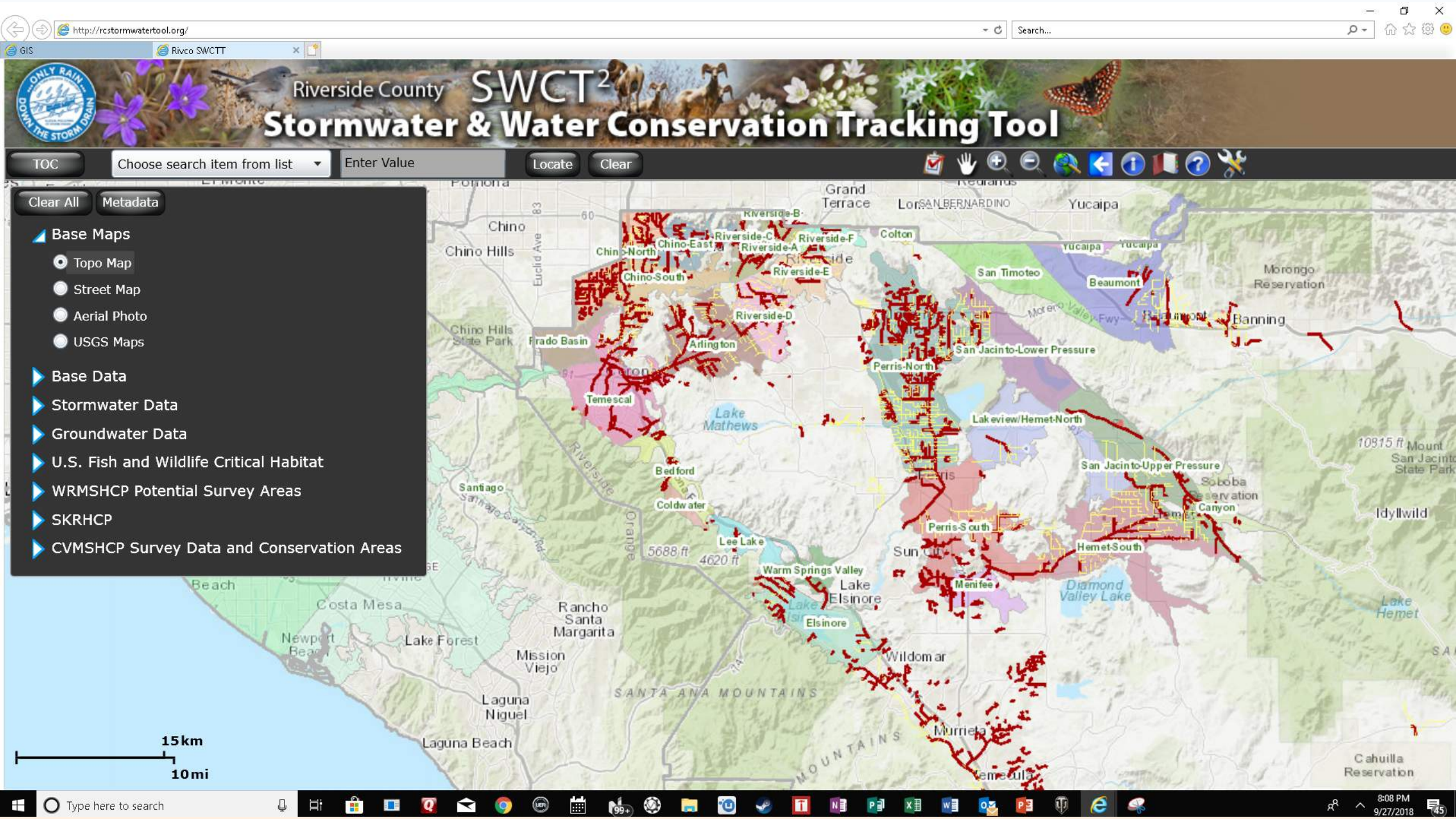
- **Recharge Projects**

- Arlington Desalter Recharge Expansion Phase II (WMWD)
 - Bautista Creek Recharge Basin Expansion (LHWD)
 - Coldwater Creek Recharge Basin Rehabilitation (Corona)
 - Lincoln/Cota Street Recharge Basin Diversion (Corona)
 - Elsinore Line A Debris Basin (EVMWD)
 - Little Lake Basin Expansion (LHWD)
 - Meridian Channel Diversion Project (EMWD)
 - Mockingbird Reservoir Dredging Project (Riverside)
 - Noble Creek Recharge Basin Expansion (BCVWD)
 - Riverside / Corona Dams Reoperation (Riverside/Corona)
 - San Jacinto River Recharge Basin (EMWD)



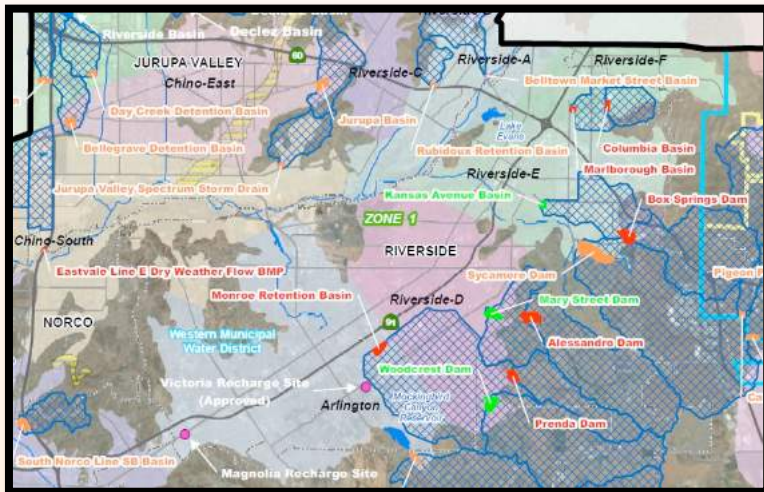


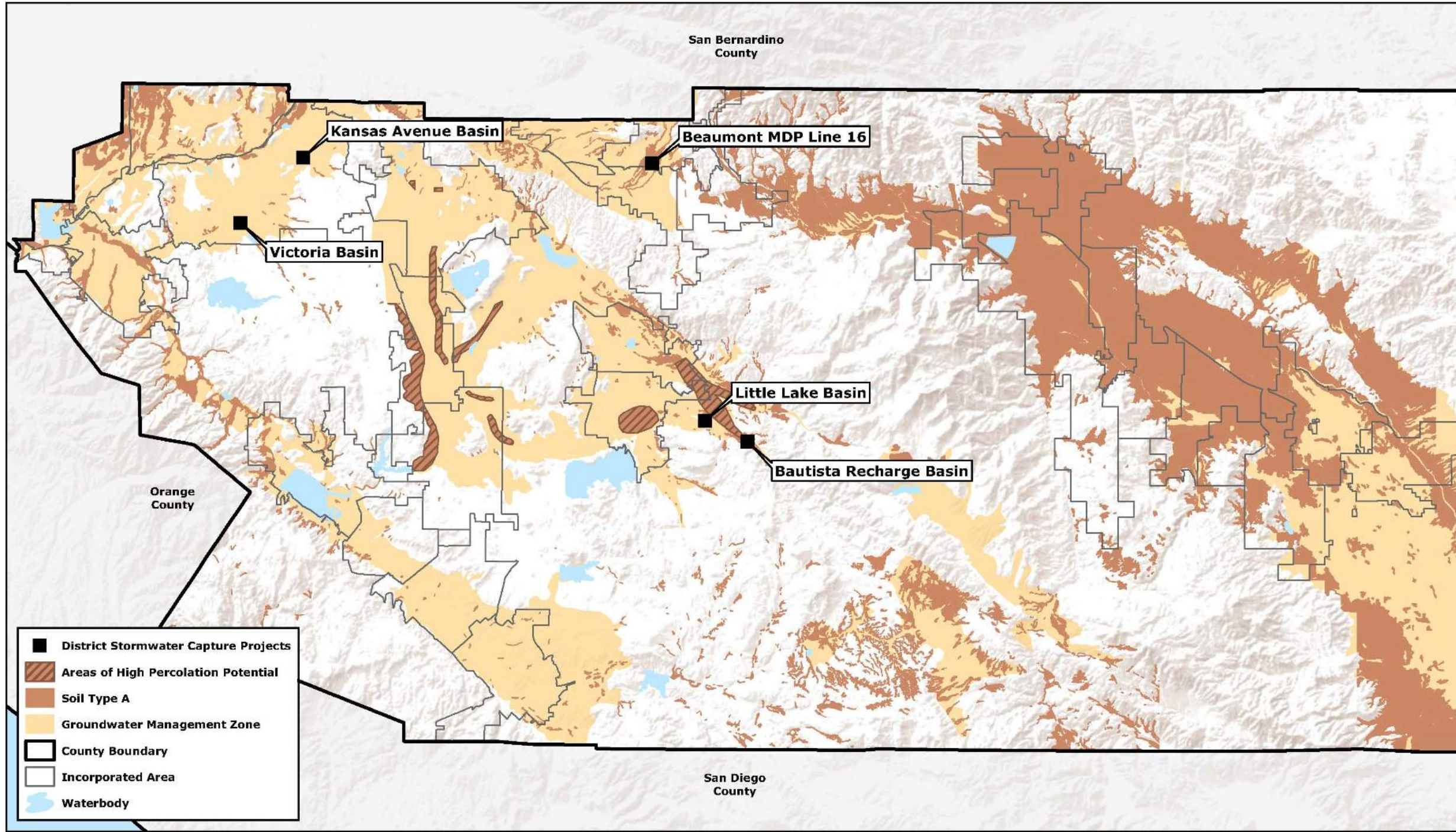




Infiltration Testing

- Infiltration or storage potential evaluated on 84 District basins
- Infiltration tests completed on 25 of the basins





Challenges

- Stormwater capture opportunities not as plentiful as we expected
- Aligning resources / timing
- Water rights

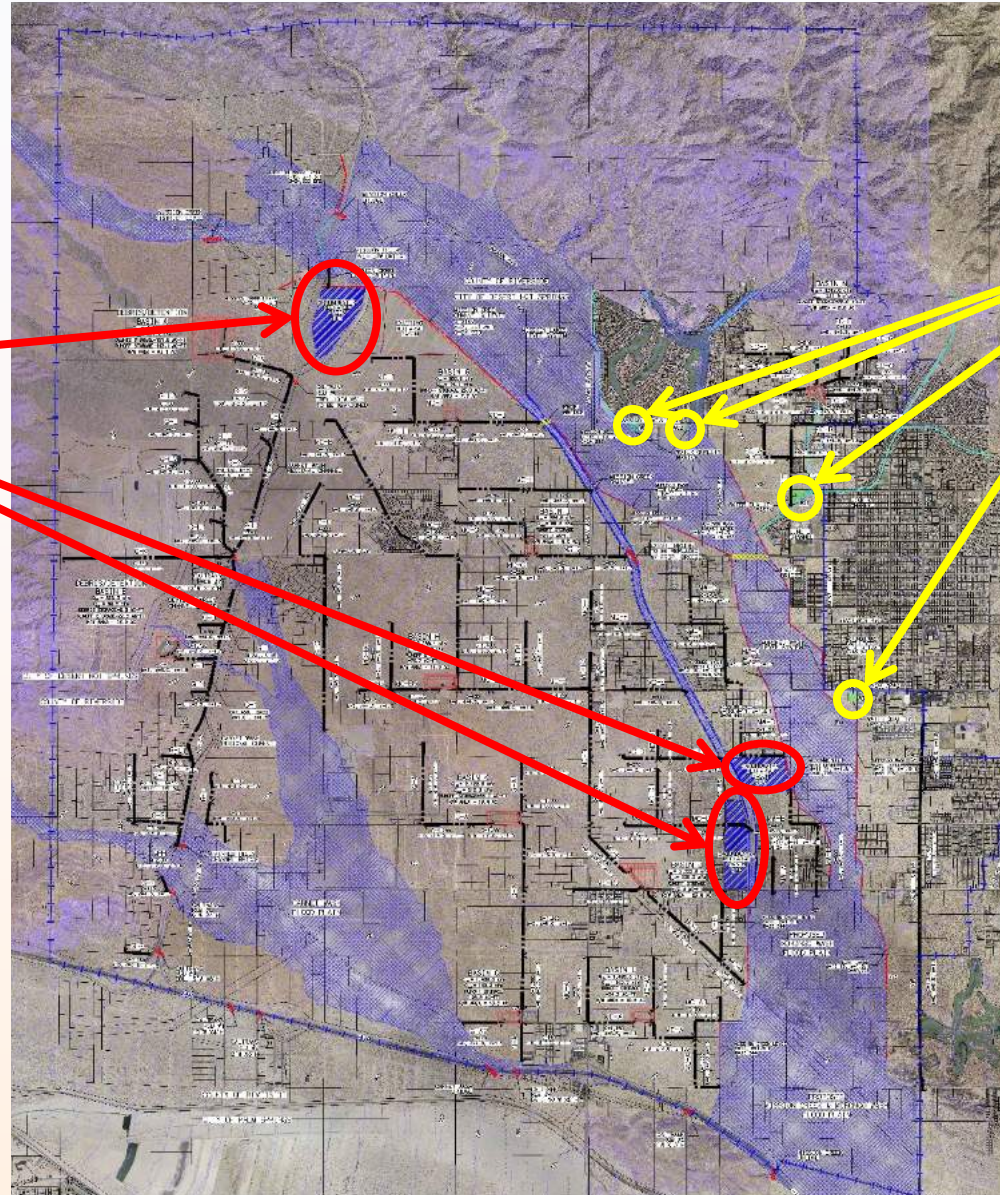
Strategy

- Proactively engage potential partners during the design phase
- Incorporate multi-use friendly concepts into the design of projects
- Continue to identify and catalogue potential locations, opportunities for future projects

West Desert Hot Springs MDP



Groundwater
Recharge
Basins



Water
Quality
Basins



Victoria Basin



Purpose: Expand Arlington Desalter Facility in Riverside to facilitate the recharge of currently unused or underutilized local water resources, including stormwater and dry-weather flows

Partner: Western Municipal Water District

Status: Completed



Little Lake Basin



Purpose: Modify detention basin to include “dead storage” to increase volume retained by 15.3 acre-feet

Partner: Lake Hemet Municipal Water District

Status: Completed

Little Lake Basin Recharge Modifications	
Phase	Δ Volume (acre-feet)
1	3.3
2	3.2
3	3.1
4	2.9
5	2.8
Total	15.3

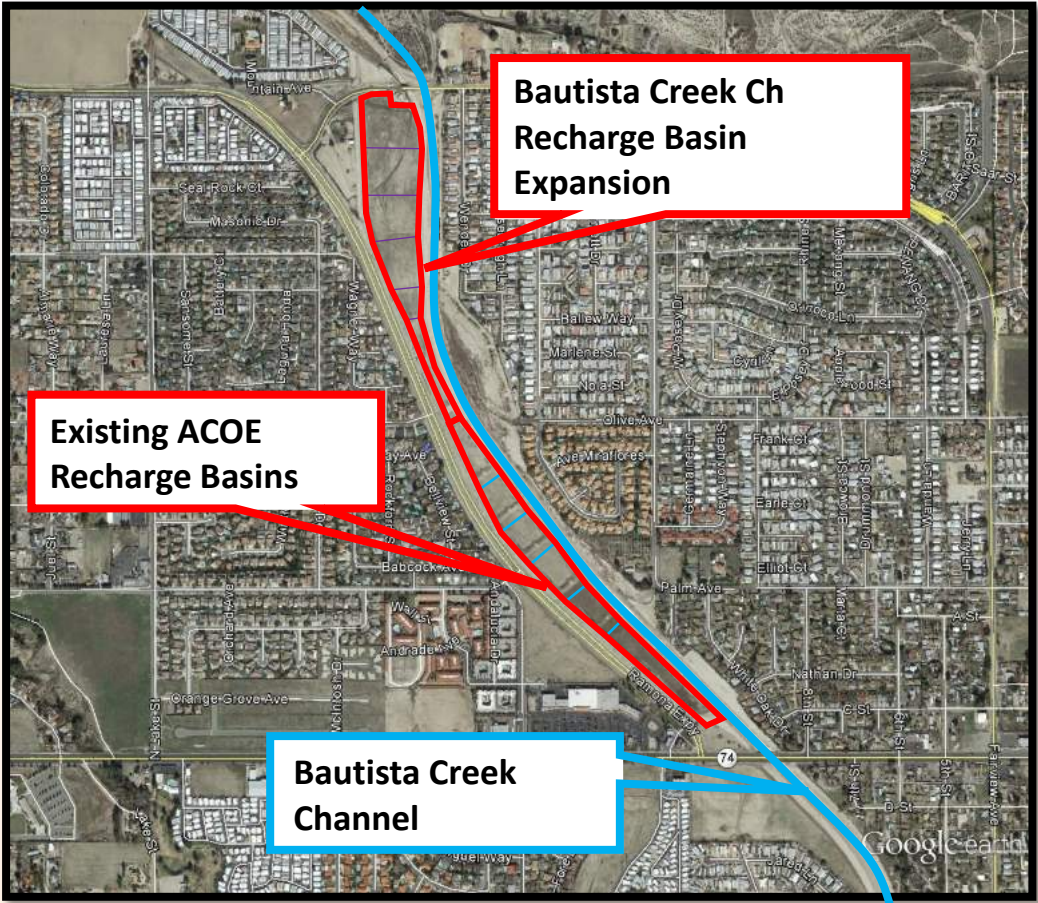


Bautista Recharge Basin

Purpose: Expand existing Army Corps of Engineers Bautista Creek Channel Basins to be used to infiltrate surplus imported water by Lake Hemet Municipal Water District

Partner: Lake Hemet Municipal Water District

Status: Finalizing design



Bautista Cr Ch Recharge Basin Expansion	
Step Basin	Ponding AC-FT
1	4.5
2	3.0
3	10.1
4	4.8
5	2.0
6	0.8
Total	25.2



Beaumont MDP Line 16



Purpose: Provide 10-year storm return frequency flood protection for the local residents of Cherry Valley while also promoting groundwater recharge and improving water quality by conveying water to NCRF-Ph II

Partner: Beaumont-Cherry Valley Water District (BCVWD)

Status: Conceptual design completed



Phoenix Diversion



Purpose: Reducing bacteria in Santa Ana River by diverting dry weather flows to Riverside Sewer Treatment Plant

Partner: City of Riverside

Status: Finalizing design

Next Steps

- **Developing Stormwater Management Plans for Santa Ana, Santa Margarita and Whitewater Watersheds**
- **Continue to develop facilities that support future partnerships, including water conservation**
- **Ready to partner**

Other District Facility Residents



Questions?