



Sustainable Groundwater Management Act (SGMA)

Keith Wallace, P.E.

Sustainable Groundwater Management Office

October 14, 2020



CALIFORNIA DEPARTMENT OF WATER RESOURCES
SUSTAINABLE GROUNDWATER
MANAGEMENT PROGRAM

Presentation Outline

- Overview Statewide Groundwater Management and the Sustainable Groundwater Management Act (SGMA)
- DWR Engagement Support to Date
- Next Steps



Groundwater Supports California's Drinking Water

In an average year, In dry years, up to
nearly **40%** **60%**

of California's water supply comes
from groundwater

Approximately **85%** of Californian's rely on groundwater



Surface Water and Groundwater

For over 100 years, surface water has been actively managed in California

Sustainable groundwater management is a new statewide effort



Sustainable Groundwater Management Act (SGMA)



“Groundwater is best suited to be managed at the local level.”
– Former Governor Jerry Brown



Where Does SGMA Apply?

515 Basins

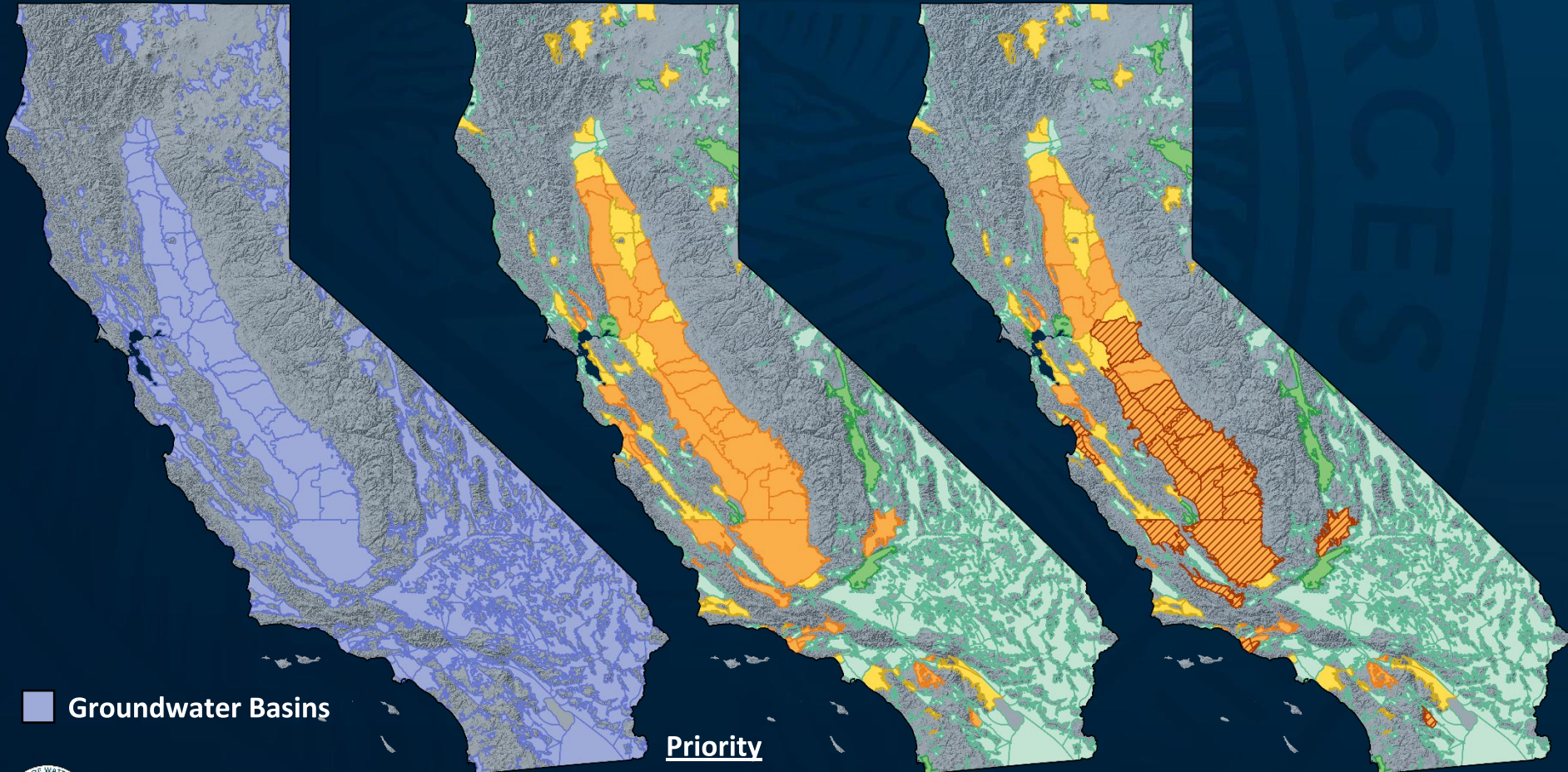
- GW Pumping: 20.5 MAF
- Population: 30.4 M
- Irrigated Acres: 7.5 M

94 SGMA Required Basins

- GW Pumping: 18.3 MAF (90%)
- Population: 15.4 M (51%)
- Irrigated Acres: 6.7 M (88%)

21 Critically Overdrafted Basins

- GW Pumping: 12.8 MAF (62%)
- Population: 3.7 M (12%)
- Irrigated Acres: 4 M (53%)



Groundwater Sustainability Plans

Minimize and Avoid these Six Undesirable Results:



Lowering
GW Levels



Reduction
of Storage



Seawater
Intrusion



Degraded
Quality



Land
Subsidence



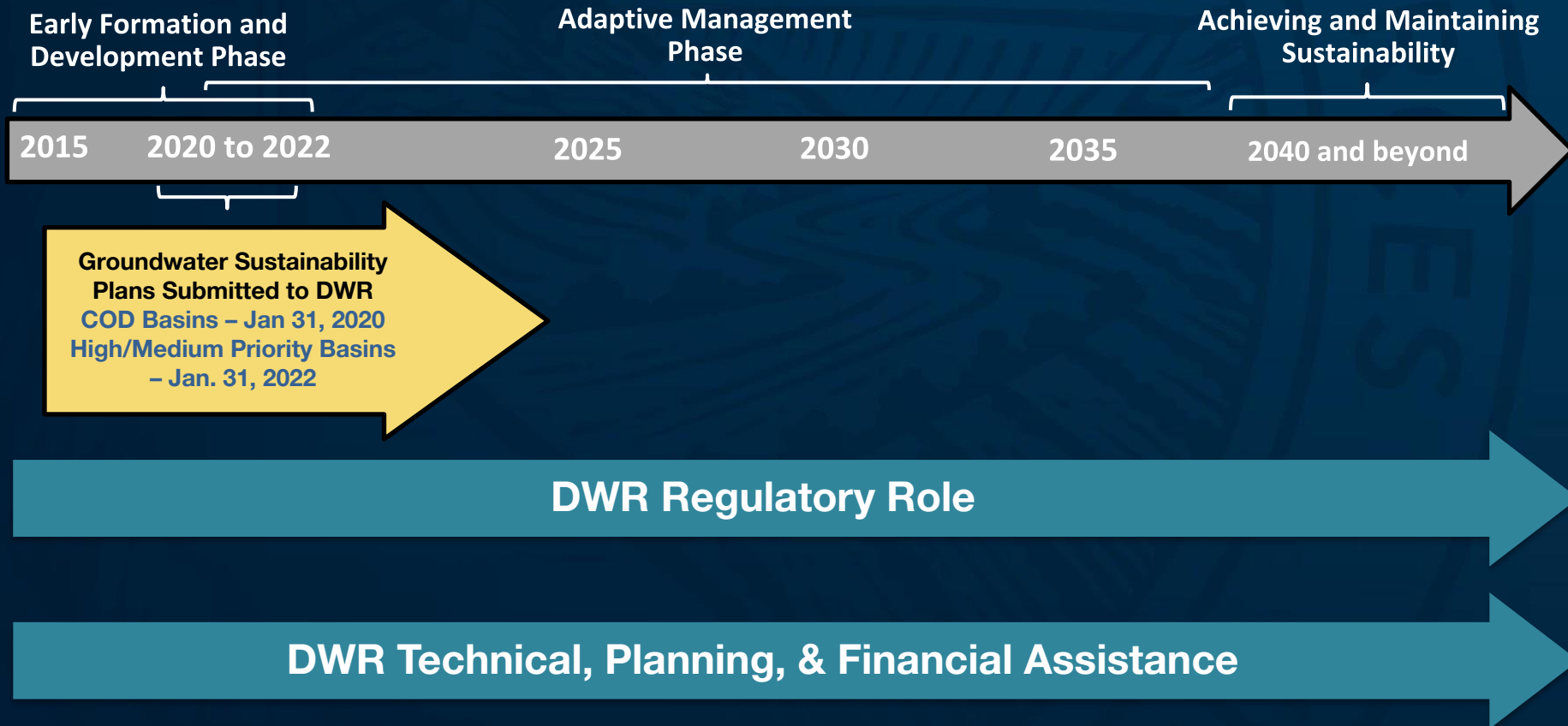
Surface Water
Depletion



Roles in SGMA



SGMA 20-Year Plan Horizon



DWR Assistance Overview

Technical Assistance

- *Best Management Practices*
- *Technical Support Services*
- *Statewide Datasets, Analysis, and Tools*

Planning Assistance

- *Engagement with SGMA Basins*
- *Facilitation Support Services*
- *Written Translation Services*

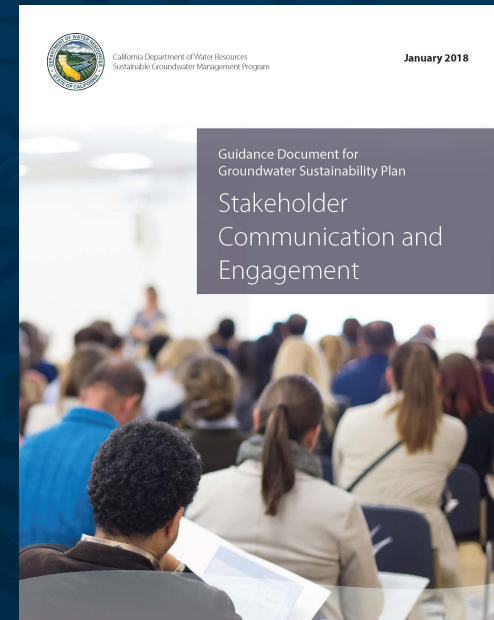
Financial Assistance

- (Funded by Prop 1 and Prop 68)
- *SGM Planning Grant Program*
 - *SGM Implementation Grant Program*



DWR Efforts to Encourage Engagement

- Developed Materials to Assist GSAs with engagement:
- Two guidance documents:
 - Stakeholder Communication and Engagement and
 - Engagement with Tribal Governments
- Communication and Engagement Plan Outline
- Digital toolkit
- Virtual meeting guidance



Why is URC Engagement Important?

- SGMA requires GSAs to consider all beneficial uses and users and the human right to water when developing and implementing GSPs
 - URCs are beneficial users
- Proper planning to engage with all users
- Not considering a use or user now will likely lead to GSP implementation disruption in the future



Other DWR Efforts to Improve Engagement

- Direct Engagement with SGMA Basins
- Facilitation Support Services
- Written Translation Services
- Financial Assistance



DWR Engagement with SGMA Basins

- DWR Regional Office staff assigned as Points of Contact (POCs) for each high- and medium-priority basin/subbasin
- POCs and Regional Coordinators engage with GSAs during GSP development and implementation



Facilitation Support Services

Services Offered

- Stakeholder assessments
 - Public & stakeholder outreach
 - Targeted outreach to underrepresented GW users
 - Tribal government outreach & engagement
 - Meeting facilitation
 - Governance development support
-
- Intra-basin & inter-basin coordination support
 - Interest-based negotiations/consensus building support
 - Support for virtual outreach and engagement



Legend
FSS

Written Translation Services

Offers written translation of:

- Notices, letters, forms, presentations, fact sheets, pamphlets, leaflets, and brochures

Limitations

- Provided electronically
- No graphic design
- 5,000 word count limit per groundwater basin/subbasin (~30 full pages of text)

Available Languages:

Chinese

Hmong

Korean

Laotian

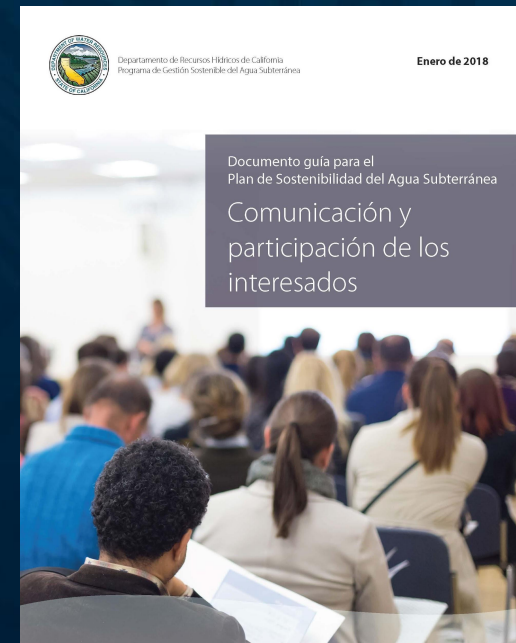
Punjabi

Spanish

Urdu

Vietnamese

CALIFORNIA DEPARTMENT OF WATER RESOURCES
SUSTAINABLE GROUNDWATER
MANAGEMENT PROGRAM



Financial Assistance

Sustainable Groundwater Management Planning Grant Program

- Funds activities that support the development of a GSP
- Rounds 1 and 2 funded by Prop 1 ~ \$92.5M
- Round 3 funded 53 applicants by Prop 68 (\$46.25M) and Prop 1 (\$1.2M) for a total of \$47.45M
- Has awarded more than \$16 million for projects that serve Severely Disadvantaged Communities.
 - Much of this funding has been used for outreach and engagement to URCs



Room For Improvement

- Despite emphasis, URC engagement varies throughout California
- Initial indications show most likely due to lack of time and/or resources
- GSAs will need to further engage URCs during GSP implementation and 5-year updates



Next Steps

- DWR constantly working to improve assistance programs
- Currently in early stages of developing tool kits GSAs can use for GSA engagement efforts
- SGMA Program will utilize DACTI Needs Assessments to:
 - Better define potential barriers that restrict URC Engagement
 - Refine SGMA Planning Assistance Programs
 - Develop new assistance if necessary



Next Steps Cont.

- Encourage collaboration with IRWM regions
- IRWM Regions have been building partnerships for more than 10 years
- These partnerships can help GSAs:
 - Better engage with beneficial users
 - Understand data gaps
 - Develop regional, multi-benefit projects



Get Involved

- Visit DWR's SGMA Portal at sgma.water.ca.gov to:
 - Find the Groundwater Sustainability Agency (GSA) in your area
 - View GSPs currently submitted to DWR
- SGMP ListServ:
https://listserv.ce.cnr.ca.gov/scripts/wa.exe?SUBED1=DWR_SGMP&A=1
- SGMA assistance efforts (DWR RO Contacts found under Communication and Engagement Tab):
<https://water.ca.gov/Programs/Groundwater-Management/Assistance-and-Engagement>



Questions?

