

2020 Virtual Summit Ensuring Equitable Involvement in Regional Water Planning



Post-Implementation/Reassessing in
Times of Crisis

THE TUOLUMNE ME-WUK STORY

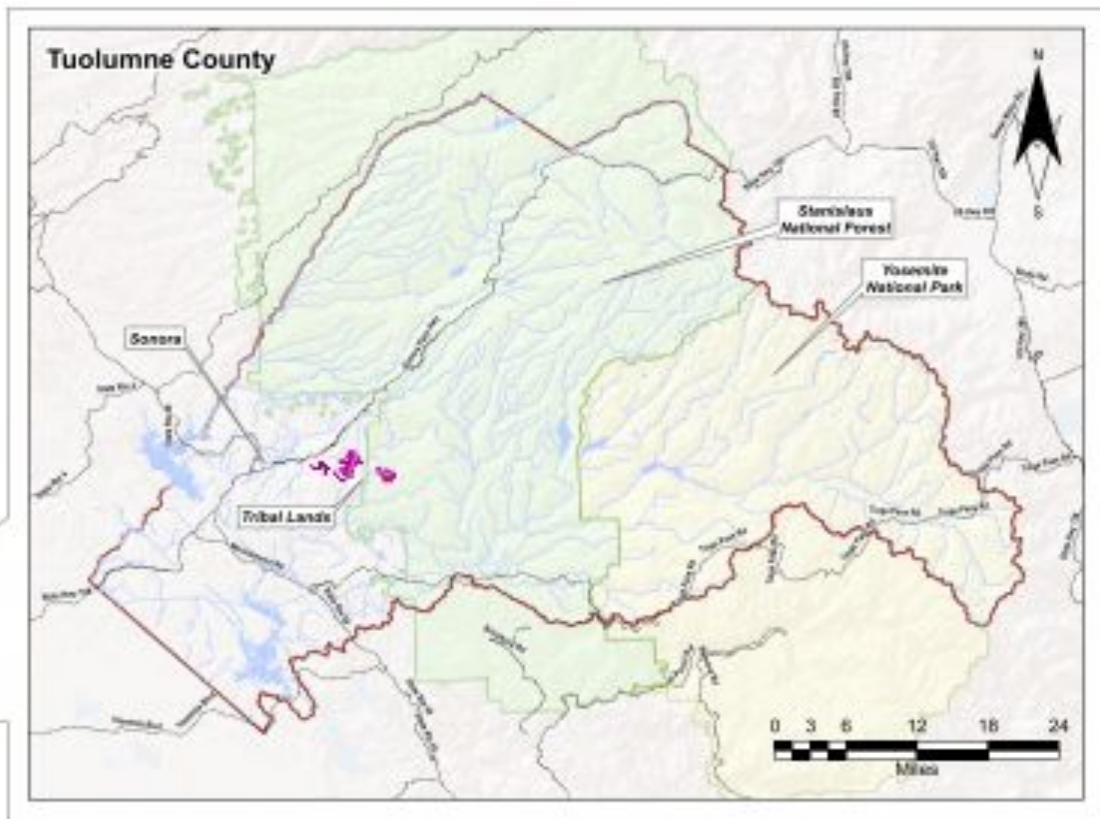
Introduction

- Dore A. Bietz
- Planner/Emergency Manager
- Tuolumne Band of Me-Wuk Indians
- (209) 928-5304
- DBietz@mewuk.com





Tuolumne Me-Wuk Tribal Lands in Relation to the County of Tuolumne and the State of California



Legend

- Tuolumne Me-Wuk Tribal Lands (Trust and Fee)
- The State of California
- Tuolumne County Boundary
- Highways and Other Major Roadways
- Rivers and Creeks
- Lakes and Reservoirs
- Stanislaus National Forest Boundary
- Yosemite National Park Boundary

DRAFT - For Reference Only; Not Complete and Not Absolute
For informational purposes only. No warranty or liability is made.
Contact Tuolumne Me-Wuk Tribal Council Planning & Development Department
at (209) 926-5304 for more information. Updated March 25, 2014 by Jonathan Rodriguez

Post-Implementation & Reassessing in a Time of Crisis

- *Community response to*
 - *Crises of climate change*
 - *COVID-19*
 - *Injustices of racial inequity*



Thank you!

Dore A. Bietz
Planner/Emergency Manager
(209) 928-5304
DBietz@mewuk.com

www.mewuk.com

